

Audit Certification
Annual Financial Report:
For Fiscal Year Ending 6/30/2023
(Pursuant to PA School Code Section 218(b))

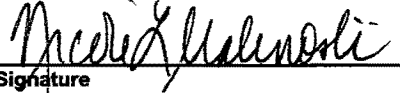
LEA Name : Lebanon SD
AUN Number : 113384603
County : Lebanon

Audit Certification Due: 12/31/2023

This certification is applicable to the Annual Financial Report data submitted through the Consolidated Financial Reporting System (CFRS).

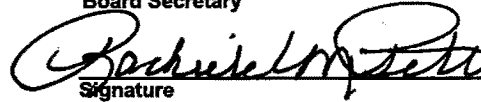
CERTIFICATION: By signing this page I agree that the financial statements of the school have been properly audited as noted above pursuant to Article XXIV, and in the auditor's professional opinion, the Annual Financial Report (PDE-2057) submitted through CFRS is materially consistent with the audited financial statements.

Chief School Administrator


Signature

11/15/2023
Date

Board Secretary


Signature

11/15/2023
Date

Kelly Herr

Contact Person

kherr@lebanon.k12.pa.us

Contact Person E-mail Address

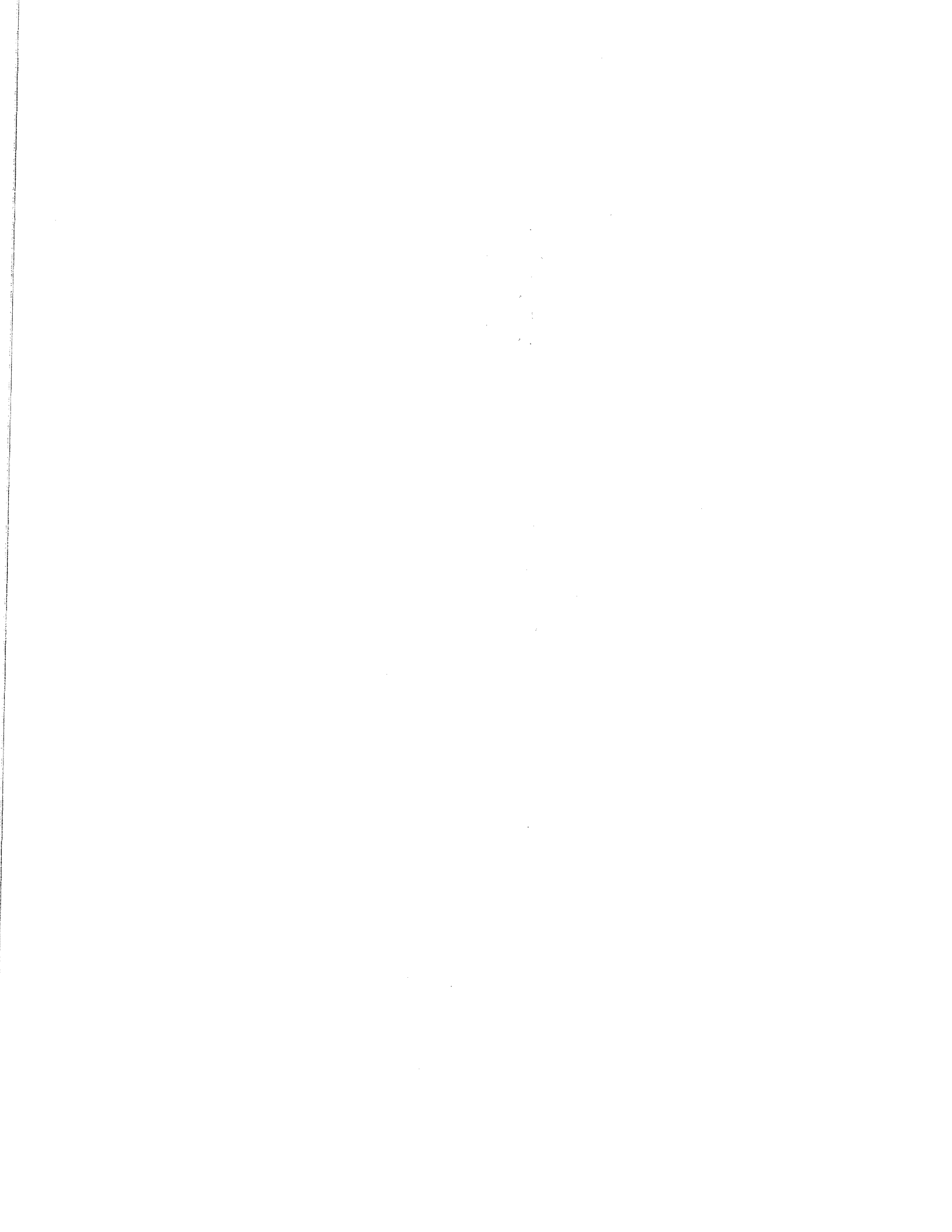
(717)270-6712

Ext :

Contact Person Telephone Number

(717)272-1797

Contact Person Fax Number



LEA Name : Lebanon SD
Address : 1000 S 8th St
Lebanon , PA 17042

County : Lebanon
AUN Number : 113384603
LEA Type : SD

Annual Financial Report Accuracy Certification Statement

For Fiscal Year Ending
6/30/2023

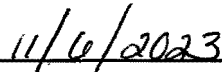
Pennsylvania Department of Education
&
Office of Comptroller Operations

PDE-2056: Intermediate Unit
PDE-2057: School District, AVTS/CTC, Charter School,
and Special Program Jointure

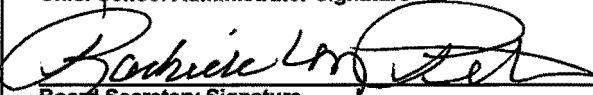
CERTIFICATION: By signing this page I agree that the electronic data submitted is a complete and accurate statement of the financial operations and status of the local education agency for the fiscal year. It has been prepared in accordance with generally accepted accounting principles and established Commonwealth of PA reporting guidelines.



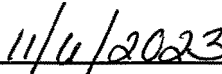
Chief School Administrator Signature



Date



Board Secretary Signature



Date

Kelly Herr

Contact Person

(717)270-6712 Ext :

Contact Person Telephone Number

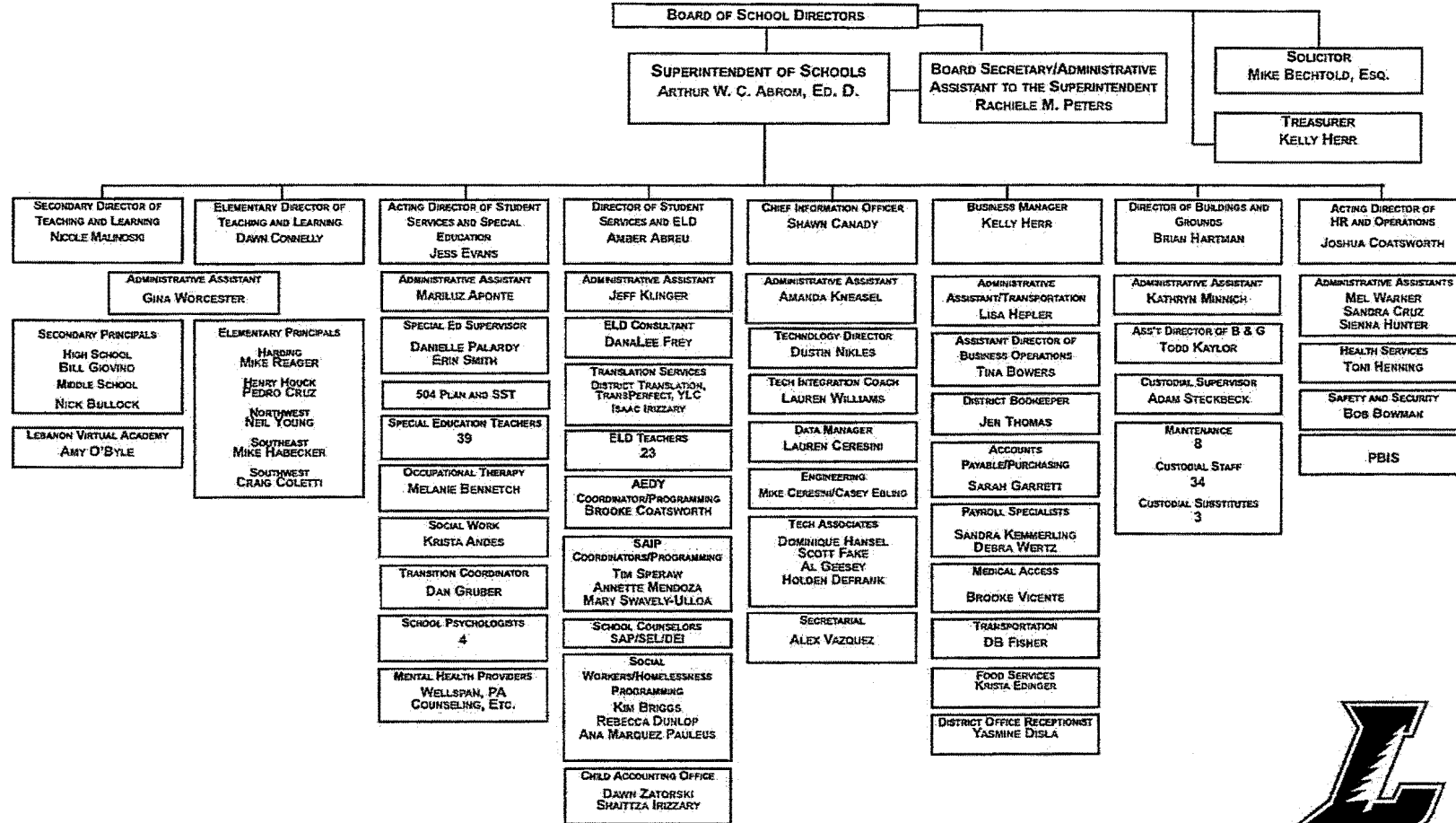
kherr@lebanon.k12.pa.us

Contact Person E-mail Address

(717)272-1797

Contact Person Fax Number

LEBANON SCHOOL DISTRICT
2022-2023 ADMINISTRATIVE ORGANIZATION



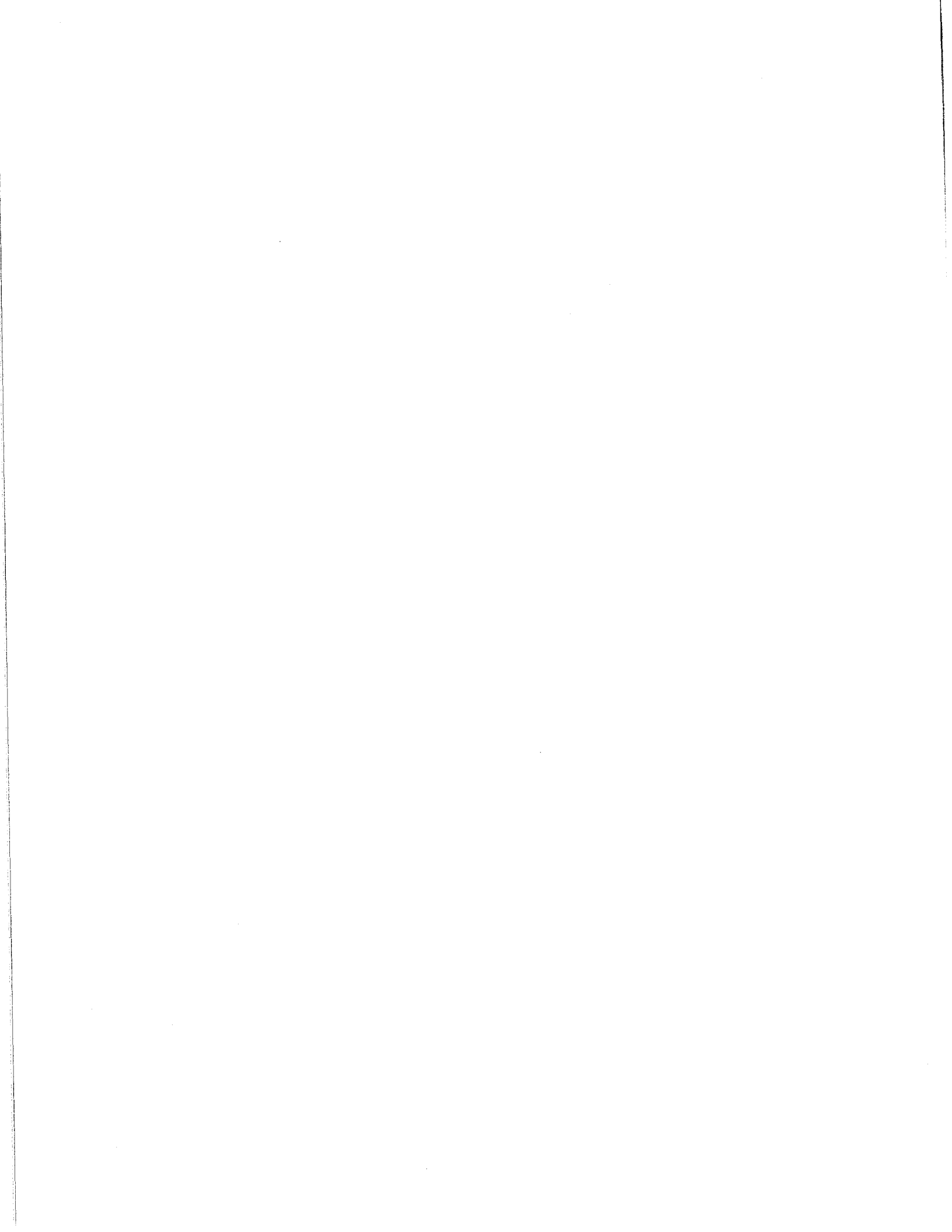




**LEBANON SCHOOL DISTRICT
LEBANON, PENNSYLVANIA**

AUDIT REPORT

JUNE 30, 2022



LEBANON SCHOOL DISTRICT
NOTES TO FINANCIAL STATEMENTS

NOTE 1 SUMMARY OF SIGNIFICANT ACCOUNTING POLICIES (cont'd)

outstanding between the governmental activities and business-type activities are reported in the government-wide financial statements as "internal balances."

Capital Assets

Capital assets, which include property, plant, and equipment, are reported in the applicable governmental or business-type activities columns in the entity-wide and proprietary fund financial statements. Capital assets are defined by the District as assets with an initial, individual cost of more than \$5,000 and an estimated useful life in excess of one year. Such assets are recorded at historical cost if purchased or constructed. Donated capital assets are recorded at estimated fair value at the date of donation.

The costs of normal maintenance and repairs that do not add to the value of the asset or materially extend assets lives are not capitalized.

Major outlays for capital assets and improvements are capitalized as projects are constructed, inclusive of ancillary costs.

Property, plant, and equipment of the District are depreciated using the straight-line method over the following estimated useful lives:

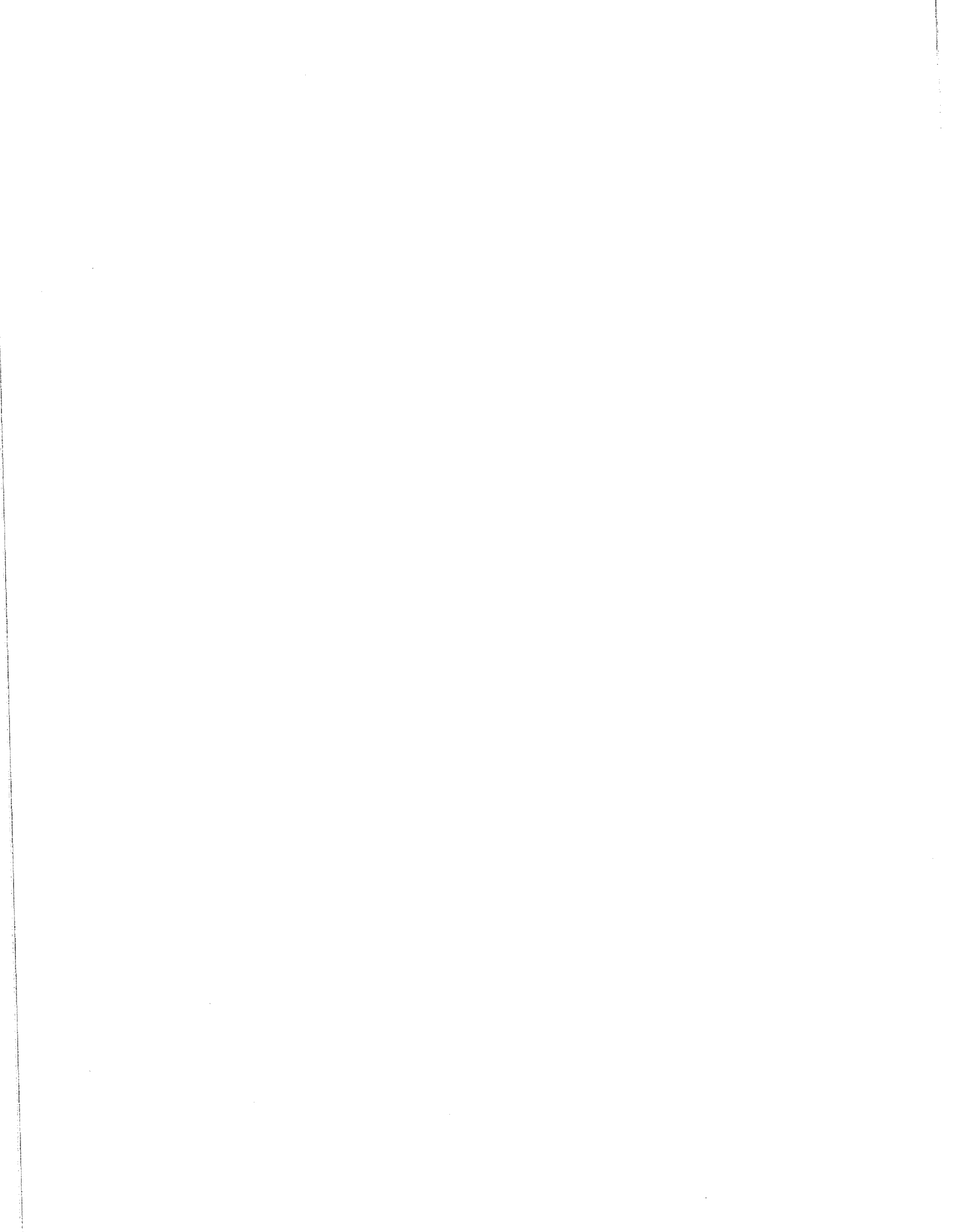
Buildings and improvements	20 - 50 years
Furniture and equipment	5 - 10 years
Right to use asset	life of lease

Compensated Absences

District policies permit employees to accumulate earned but unused vacation and personal and sick days as stipulated in each bargaining unit's contract. The liability for these compensated absences is recorded as long-term liabilities in the entity-wide financial statements. The current portion of this debt is estimated based on historical trends. In the fund financial statements, governmental funds report the compensated absence liability payable from expendable available financial resources.

Long-term Obligations

In the entity-wide financial statements and proprietary fund financial statements, long-term debt and other long-term obligations are reported as liabilities. Bond premiums and discounts are netted against outstanding principal balances and amortized over the life of the bonds. Bond issuance costs are expensed when incurred. Deferred amounts on refunding are recorded as a deferred inflow or outflow of resources and amortized over the life of the old debt or the life of the new debt, whichever is shorter. All amortized amounts are amortized using the straight-line method.



<u>Val Number</u>	<u>Description</u>	<u>Justification</u>
42420	<p>Expenditure Detail: Total current year 2700-513 expenditure varies from prior year by 10%. Correct the data or enter a justification.</p> <p>2700-513, AFR Exp Detail: \$1,781,079.21 2700-513, PY AFR Amount: \$1,609,681.30</p>	<p>Current expenditure varies from prior year by 10.6%. The variance is due to a transportation contract amendment that accommodated both parties during rather difficult and unpredictable financial times following the COVID-19 pandemic.</p>
50278	<p>SOIN: Current Year AFR amount must equal Prior Year AFR amount. Note: If the variance is due to a Subscription-Based IT Arrangement (SBITA) existing prior to GASB 96 implementation that is now being included on the SOIN as Leases & Other Right-to-Use Arrangements "Amount at FY Start", please note this within the justification.</p> <p>SOIN, Beg Bal, Govt Funds Leases & Other Right to Use Arrangements: \$301,565.00 PY Ending Bal, Govt Funds Leases & Other Right to Use Arrangements: \$301,694.00</p>	<p>\$129 difference due to small adjustment from draft to final audited financial statements in 2021-22.</p>
50380	<p>CESE: The amount reported on Line 1 of the CESE exceeds the Governmental Fund special education expenditures in Function 1200. Please correct or provide a justification.</p>	<p>Special Education students represent 22% of the District's total student population. Thus, when allocating Function 1000 expenditures net of exclusions, 22% are attributed to special education.</p>
60138	<p>ICR - Proprietary Expense Detail: Entries in Fund 51 and Object 500 must equal Statement of Revenues, Expenses, and Changes in Net Position (REP)</p> <p>Prop Exp Dtl: Fund 51, Object 500: \$1,715,252.28 REP: Fund 51, Object 500: \$1,715,251.00</p>	<p>Rounding between Proprietary Expense Detail and REP.</p>

Amounts Expressed in Whole Dollars

	<u>General Fund</u> (10)	<u>Student Sponsored</u> <u>Activity Fund</u> (21)	<u>Public Purpose Trust</u> (27)	<u>Other Compt Approved</u> (28)	<u>Athletic / Activity</u> (29)
Assets And Deferred Outflows Of Resources					
Assets					
0100 Cash and Cash Equivalents	1,253,780		133,984		
0110 Investments	42,501,453				
0120 Taxes Receivable	1,558,056				
0130 Due From Other Funds	3,943,614				
0141 Due From Other Governments	9,083,334				
0142 State Revenue Receivable					
0143 Federal Revenue Receivable					
0145 Other Intergovernmental Revenue Receivable					
0146 Due from Primary Government					
0147 Due from Component Unit					
0150 Other Receivables	68,108				
0170 Inventories					
0180 Prepaid Expenses (Expenditures)	81,348				
0190 Other Current Assets					
Total Assets	\$58,489,693		\$133,984		
0910 Deferred Outflows of Resources					
Total Assets And Deferred Outflows Of Resources	\$58,489,693		\$133,984		

Amounts Expressed in Whole Dollars	<u>Capital Reserve (690.</u> <u>1850)</u> <u>(31)</u>	<u>Capital Reserve (1431)</u> <u>(32)</u>	<u>Other Capital Projects</u> <u>Fund</u> <u>(39)</u>	<u>Debt Service</u> <u>(40)</u>	<u>Permanent</u> <u>(90)</u>
Assets And Deferred Outflows Of Resources					
Assets					
0100 Cash and Cash Equivalents			9,802,868		
0110 Investments				58,149	
0120 Taxes Receivable					
0130 Due From Other Funds					
0141 Due From Other Governments					
0142 State Revenue Receivable					
0143 Federal Revenue Receivable					
0145 Other Intergovernmental Revenue Receivable					
0146 Due from Primary Government					
0147 Due from Component Unit					
0150 Other Receivables					
0170 Inventories					
0180 Prepaid Expenses (Expenditures)					
0190 Other Current Assets					
Total Assets			\$9,802,868	\$58,149	
0910 Deferred Outflows of Resources					
Total Assets And Deferred Outflows Of Resources			\$9,802,868	\$58,149	

Amounts Expressed in Whole Dollars

Total Governmental Funds

Assets And Deferred Outflows Of Resources

Assets

0100 Cash and Cash Equivalents	11,190,632
0110 Investments	42,559,602
0120 Taxes Receivable	1,558,056
0130 Due From Other Funds	3,943,614
0141 Due From Other Governments	9,083,334
0142 State Revenue Receivable	
0143 Federal Revenue Receivable	
0145 Other Intergovernmental Revenue Receivable	
0146 Due from Primary Government	
0147 Due from Component Unit	
0150 Other Receivables	68,108
0170 Inventories	
0180 Prepaid Expenses (Expenditures)	81,348
0190 Other Current Assets	

Total Assets **\$68,484,694**

0910 Deferred Outflows of Resources

Total Assets And Deferred Outflows Of Resources **\$68,484,694**

Amounts Expressed in Whole Dollars

	<u>General Fund</u> (10)	<u>Student Sponsored</u> <u>Activity Fund</u> (21)	<u>Public Purpose Trust</u> (27)	<u>Other Compt Approved</u> (28)	<u>Athletic / Activity</u> (29)
Liabilities And Deferred Inflows Of Resources And Fund Balances					
Liabilities					
0400 Due to Other Funds	481,436		368		
0411 Due to Other Governments					
0412 Due to Primary Government					
0413 Due to Component Unit					
0420 Accounts Payable	6,659,221				
0430 Contracts Payable					
0440 Current Portion of Long-Term Debt					
0450 Short-Term Payables					
0461 Accrued Salaries and Benefits	8,520,135				
0462 Payroll Deductions and Withholding					
0480 Unearned Revenues	808,496				
0490 Other Current Liabilities					
Total Liabilities	\$16,469,288		\$368		
0950 Deferred Inflows of Resources					
Fund Balances					
0810 Nonspendable Fund Balance	81,348				
0820 Restricted Fund Balance			133,616		
0830 Committed Fund Balance	32,995				
0840 Assigned Fund Balance	23,000,000				
0850 Unassigned Fund Balance	18,906,062				
Total Fund Balances	\$42,020,405		\$133,616		
Total Liabilities, Deferred Inflows Of Resources And Fund Balances	\$58,489,693		\$133,984		

Amounts Expressed in Whole Dollars

	<u>Capital Reserve (690.</u> <u>1850)</u> <u>(31)</u>	<u>Capital Reserve (1431)</u> <u>(32)</u>	<u>Other Capital Projects</u> <u>Fund</u> <u>(39)</u>	<u>Debt Service</u> <u>(40)</u>	<u>Permanent</u> <u>(90)</u>
Liabilities And Deferred Inflows Of Resources And Fund Balances					
Liabilities					
0400 Due to Other Funds			3,907,489		
0411 Due to Other Governments					
0412 Due to Primary Government					
0413 Due to Component Unit					
0420 Accounts Payable					
0430 Contracts Payable					
0440 Current Portion of Long-Term Debt					
0450 Short-Term Payables					
0461 Accrued Salaries and Benefits					
0462 Payroll Deductions and Withholding					
0480 Unearned Revenues					
0490 Other Current Liabilities					
Total Liabilities			\$3,907,489		
0950 Deferred Inflows of Resources					
Fund Balances					
0810 Nonspendable Fund Balance					
0820 Restricted Fund Balance			5,895,379	58,149	
0830 Committed Fund Balance					
0840 Assigned Fund Balance					
0850 Unassigned Fund Balance					
Total Fund Balances			\$5,895,379	\$58,149	
Total Liabilities, Deferred Inflows Of Resources And Fund Balances			\$9,802,868	\$58,149	

LEA : 113384603 Lebanon SD

Printed 11/6/2023 9:58:20 AM

Amounts Expressed in Whole Dollars

Total Governmental Funds

Liabilities And Deferred Inflows Of Resources And Fund Balances

Liabilities

0400 Due to Other Funds	4,389,293
0411 Due to Other Governments	
0412 Due to Primary Government	
0413 Due to Component Unit	
0420 Accounts Payable	6,659,221
0430 Contracts Payable	
0440 Current Portion of Long-Term Debt	
0450 Short-Term Payables	
0461 Accrued Salaries and Benefits	8,520,135
0462 Payroll Deductions and Withholding	
0480 Unearned Revenues	808,496
0490 Other Current Liabilities	

Total Liabilities **\$20,377,145**

0950 Deferred Inflows of Resources

Fund Balances

0810 Nonspendable Fund Balance	81,348
0820 Restricted Fund Balance	6,087,144
0830 Committed Fund Balance	32,995
0840 Assigned Fund Balance	23,000,000
0850 Unassigned Fund Balance	18,906,062

Total Fund Balances **\$48,107,549**

Total Liabilities, Deferred Inflows Of Resources And Fund Balances **\$68,484,694**

Amounts Expressed in Whole Dollars	<u>General Fund</u> <u>(10)</u>	<u>Student Sponsored</u> <u>Activity Fund</u> <u>(21)</u>	<u>Public Purpose Trust</u> <u>(27)</u>	<u>Other Compt Approved</u> <u>(28)</u>	<u>Athletic / Activity</u> <u>(29)</u>
Revenues					
6000 Revenue from Local Sources	26,552,415		80,714		
7000 Revenue from State Sources	63,894,352				
8000 Revenue from Federal Sources	20,731,666				
Total Revenues	\$111,178,433		\$80,714		
Expenditures					
1000 Instruction	52,229,078				
2000 Support Services	23,070,876		66,401		
3000 Operation of Non-Instructional Services	1,646,468				
4000 Facilities Acquisition, Construction and Improvement Services	29,422,339				
5110 Debt Service	5,584,310				
5130 Refund of Prior Year Revenues / Receipts					
5140 Leases and Other Right-to-Use Arrangements	91,641				
Total Expenditures	\$112,044,712		\$66,401		
Excess (Deficiency) Of Revenues Over Expenditures	(\$866,279)		\$14,313		
Other Financing Sources (Uses)					
9110 Face Value of Bonds Issued					
9120 Proceeds from Refunding of Bonds					
9130 Bond Premiums					
9200 Proceeds from Extended Term Financing, Leases, and Other Right-to-Use Arrangements	96,594				
9300 Interfund Transfers - IN					
9400 Sale of or Compensation for Loss of Fixed Assets					
9710 Transfers from Component Units					
9720 Transfers from Primary Governments					
9910 Other Financing Sources Not Listed in the 9000 Series					
9990 Insurance Recoveries					
5120 Debt Service -- Refunded Bonds					
5150 Bond Discounts					
5200 Interfund Transfers -- Out	5,000				
5300 Transfers Out to Component Units/Primary Governments					
Total Other Financing Sources (Uses)	\$91,594				

Amounts Expressed in Whole Dollars	<u>Capital Reserve (690)</u> <u>1850</u> <u>(31)</u>	<u>Capital Reserve (1431)</u> <u>(32)</u>	<u>Other Capital Projects</u> <u>Fund</u> <u>(39)</u>	<u>Debt Service</u> <u>(40)</u>	<u>Permanent</u> <u>(90)</u>
Revenues					
6000 Revenue from Local Sources			87,999	2,709	
7000 Revenue from State Sources					
8000 Revenue from Federal Sources					
Total Revenues			\$87,999	\$2,709	
Expenditures					
1000 Instruction					
2000 Support Services			282,016		
3000 Operation of Non-Instructional Services					
4000 Facilities Acquisition, Construction and Improvement Services			3,907,489		
5110 Debt Service				2,911	
5130 Refund of Prior Year Revenues / Receipts					
5140 Leases and Other Right-to-Use Arrangements					
Total Expenditures			\$4,189,505	\$2,911	
Excess (Deficiency) Of Revenues Over Expenditures			(\$4,101,506)	(\$202)	
Other Financing Sources (Uses)					
9110 Face Value of Bonds Issued			9,970,000		
9120 Proceeds from Refunding of Bonds					
9130 Bond Premiums			26,886		
9200 Proceeds from Extended Term Financing, Leases, and Other Right-to-Use Arrangements					
9300 Interfund Transfers - IN				5,000	
9400 Sale of or Compensation for Loss of Fixed Assets					
9710 Transfers from Component Units					
9720 Transfers from Primary Governments					
9910 Other Financing Sources Not Listed in the 9000 Series					
9990 Insurance Recoveries					
5120 Debt Service – Refunded Bonds					
5150 Bond Discounts					
5200 Interfund Transfers – Out					
5300 Transfers Out to Component Units/Primary Governments					
Total Other Financing Sources (Uses)			\$9,996,886	\$5,000	

Amounts Expressed in Whole Dollars

	<u>Total Governmental Funds</u>
Revenues	
6000 Revenue from Local Sources	26,723,837
7000 Revenue from State Sources	63,894,352
8000 Revenue from Federal Sources	20,731,666
Total Revenues	\$111,349,855
Expenditures	
1000 Instruction	52,229,078
2000 Support Services	23,419,293
3000 Operation of Non-Instructional Services	1,646,468
4000 Facilities Acquisition, Construction and Improvement Services	33,329,828
5110 Debt Service	5,587,221
5130 Refund of Prior Year Revenues / Receipts	
5140 Leases and Other Right-to-Use Arrangements	91,641
Total Expenditures	\$116,303,529
Excess (Deficiency) Of Revenues Over Expenditures	(\$4,953,674)
Other Financing Sources (Uses)	
9110 Face Value of Bonds Issued	9,970,000
9120 Proceeds from Refunding of Bonds	
9130 Bond Premiums	26,886
9200 Proceeds from Extended Term Financing, Leases, and Other Right-to-Use Arrangements	96,594
9300 Interfund Transfers - IN	5,000
9400 Sale of or Compensation for Loss of Fixed Assets	
9710 Transfers from Component Units	
9720 Transfers from Primary Governments	
9910 Other Financing Sources Not Listed in the 9000 Series	
9990 Insurance Recoveries	
5120 Debt Service – Refunded Bonds	
5150 Bond Discounts	
5200 Interfund Transfers – Out	5,000
5300 Transfers Out to Component Units/Primary Governments	
Total Other Financing Sources (Uses)	\$10,093,480

Amounts Expressed in Whole Dollars	<u>General Fund</u> (10)	<u>Student Sponsored</u> <u>Activity Fund</u> (21)	<u>Public Purpose Trust</u> (27)	<u>Other Compt Approved</u> (28)	<u>Athletic / Activity</u> (29)
Special And Extraordinary Items					
9920 Special Items – Gains					
9930 Extraordinary Items – Gains					
5520 Special Items – Losses					
5530 Extraordinary Items – Losses					
Net Change In Fund Balances	(\$774,685)		\$14,313		
Fund Balance					
0001 Fund Balance - Beginning of Fiscal Year	42,795,090		119,303		
Fund Balance - End Of Year	\$42,020,405		\$133,616		

Amounts Expressed in Whole Dollars

	<u>Capital Reserve (690)</u>	<u>Capital Reserve (1431)</u>	<u>Other Capital Projects</u>	<u>Debt Service</u>	<u>Permanent</u>
	<u>1850</u>	<u>(32)</u>	<u>Fund</u>	<u>(40)</u>	<u>(90)</u>
	<u>(31)</u>		<u>(39)</u>		
Special And Extraordinary Items					
9920 Special Items – Gains					
9930 Extraordinary Items – Gains					
5520 Special Items – Losses					
5530 Extraordinary Items – Losses					
Net Change In Fund Balances			\$5,895,380	\$4,798	
Fund Balance					
0001 Fund Balance - Beginning of Fiscal Year				53,351	
Fund Balance - End Of Year			\$5,895,380	\$58,149	

Amounts Expressed in Whole Dollars

Total Governmental Funds

Special And Extraordinary Items

9920 Special Items – Gains

9930 Extraordinary Items – Gains

5520 Special Items – Losses

5530 Extraordinary Items – Losses

Net Change In Fund Balances **\$5,139,806**

Fund Balance

0001 Fund Balance - Beginning of Fiscal Year 42,967,744

Fund Balance - End Of Year **\$48,107,550**

Amounts Expressed in Whole Dollars	<u>Food Service</u> (51)	<u>Child Care</u> <u>Operations</u> (52)	<u>Other Enterprise</u> (58)	<u>TOTAL</u>	<u>Internal Service</u> (60)
Assets And Deferred Outflows Of Resources					
Current Assets					
0100 Cash and Cash Equivalents	5,389,674			5,389,674	1,080,397
0110 Investments					
0130 Due From Other Funds	481,436			481,436	
0141 Due From Other Governments	119,451			119,451	
0142 State Revenue Receivable					
0143 Federal Revenue Receivable					
0146 Due from Primary Government					
0147 Due from Component Unit					
0150 Other Receivables	2,210			2,210	117,535
0170 Inventories	33,689			33,689	
0180 Prepaid Expenses (Expenditures)					45,050
0190 Other Current Assets					
Total Current Assets	\$6,026,460			\$6,026,460	\$1,242,982
Noncurrent Assets					
0211 Land					
0212 Site Improvements (Net)					
0220 Buildings and Building Improvements (Net)					
0230 Tangible Property and Intangible Right-To-Use Assets (Net)	457,490			457,490	
0250 Construction in Progress					
0260 Long Term Prepayments					
0290 Other Noncurrent Assets					
Total Noncurrent Assets	\$457,490			\$457,490	
0910 Deferred Outflows of Resources	258,161			258,161	
Total Assets And Deferred Outflows Of Resources	\$6,742,111			\$6,742,111	\$1,242,982

Amounts Expressed in Whole Dollars	<u>Food Service</u> (51)	<u>Child Care</u> <u>Operations</u> (52)	<u>Other Enterprise</u> (58)	<u>TOTAL</u>	<u>Internal Service</u> (60)
Liabilities And Deferred Inflows Of Resources And Net Position					
Current Liabilities					
0400 Due to Other Funds	35,699			35,699	
0411 Due to Other Governments					
0413 Due to Component Unit					
0420 Accounts Payable	137,952			137,952	587,686
0430 Contracts Payable					
0440 Current Portion of Long-Term Debt					
0450 Short-Term Payables					
0461 Accrued Salaries and Benefits					
0462 Payroll Deductions and Withholding					
0480 Unearned Revenues	97,120			97,120	
0490 Other Current Liabilities					
Total Current Liabilities	\$270,771			\$270,771	\$587,686
Noncurrent Liabilities					
0510 Bonds Payable					
0520 Extended-Term Financing Agreements Payable					
0530 Lease and Other Right-To-Use Obligations					
0540 Accumulated Compensated Absences	10,188			10,188	
0550 Authority Lease Obligations					
0560 Other Post-Employment Benefits (OPEB)	43,725			43,725	
0570 Net Pension Liability	1,313,122			1,313,122	
0599 Other Noncurrent Liabilities					
Total Noncurrent Liabilities	\$1,367,035			\$1,367,035	
Total Liabilities	\$1,637,806			\$1,637,806	\$587,686
0950 Deferred Inflows of Resources	306,758			306,758	
Net Position					
0791 Net Investment in Capital Assets	457,490			457,490	
0008 Restricted Net Position (0792 – 0798)					
0799 Unrestricted Net Position	4,340,057			4,340,057	655,296
Total Net Position	\$4,797,547			\$4,797,547	\$655,296
Total Liabilities And Deferred Inflows Of Resources And Net Position	\$6,742,111			\$6,742,111	\$1,242,982

Amounts Expressed in Whole Dollars	<u>Food Service</u> (51)	<u>Child Care Operations</u> (52)	<u>Other Enterprise</u> (58)	<u>TOTAL</u>	<u>Internal Service</u> (60)
Operating Revenues					
6600 Food Service Revenue	220,805			220,805	
0071 Charges for Services					6,188,813
0072 Other Operating Revenue					
Total Operating Revenues	\$220,805			\$220,805	\$6,188,813
Operating Expenses					
100 Personnel Services – Salaries	173,647			173,647	
200 Personnel Services – Employee Benefits	311,085			311,085	5,577,452
300 Purchased Professional and Technical Services	64,104			64,104	24,458
400 Purchased Property Services	71,208			71,208	
500 Other Purchased Services	1,715,251			1,715,251	584,446
600 Supplies	1,859,668			1,859,668	
740 Depreciation	67,426			67,426	
770 Amortization Expense					
810 Dues and Fees					
880 Refunds of Prior Years' Receipts					
890 Miscellaneous Expenditures					
Total Operating Expenses	\$4,262,389			\$4,262,389	\$6,186,356
Operating Income (Loss)	(\$4,041,584)			(\$4,041,584)	\$2,457
Non Operating Revenues (Expenses)					
6500 Earnings on Investments	53,425			53,425	6,458
6830 Federal Revenue from Intermediary Sources					
6920 Contributions and Donations from Private Sources	1			1	
6930 Gains or Losses on Sale of Fixed Assets					
6991 Refunds of a Prior Year Expenditure					
7000 Revenue from State Sources	153,307			153,307	
8000 Revenue from Federal Sources	4,138,765			4,138,765	
9990 Insurance Recoveries					
820 Claims and Judgments Against the LEA					
830 Interest					
TOTAL Non Operating Revenues (Expenses)	\$4,345,498			\$4,345,498	\$6,458
Income (Loss) Before Contributions And Transfers	\$303,914			\$303,914	\$8,915

Amounts Expressed in Whole Dollars	<u>Food Service</u> (51)	<u>Child Care Operations</u> (52)	<u>Other Enterprise</u> (58)	<u>TOTAL</u>	<u>Internal Service</u> (60)
Contributions, Transfers, and Special and Extraordinary Items					
5200 Interfund Transfers – Out					
5300 Transfers Out to Component Units/Primary Governments					
5520 Special Items – Losses					
5530 Extraordinary Items – Losses					
9300 Interfund Transfers - IN					
9500 Capital Contributions					
9700 Transfers IN From Component Units/Primary Governments					
9920 Special Items – Gains					
9930 Extraordinary Items – Gains					
Change In Net Position	\$303,914			\$303,914	\$8,915
0002 Net Position - Beginning of Fiscal Year	4,493,633			4,493,633	646,381
0003 Accounting Changes / Residual Equity Transfers					
Net Position - End Of Year	\$4,797,547			\$4,797,547	\$655,296

Amounts Expressed in Whole Dollars	<u>Food Service</u> (51)	<u>Child Care Operations</u> (52)	<u>Other Enterprise</u> (58)	<u>TOTAL</u>	<u>Internal Service(60)</u>
Cash Flows From Operating Activities					
0011 Cash Receipts From Users	310,798			310,798	6,124,358
0012 Cash Receipts From Assessments Made to Other Funds					
0013 Cash Receipts From Earnings on Investments					
0014 Cash Receipts From Other Operating Revenue					
0015 Cash Payments To Employees For Services	312,019			312,019	
0016 Cash Payments For Insurance Claims					
0017 Cash Payments To Suppliers For Goods and Services	3,851,161			3,851,161	613,721
0018 Cash Payments For Other Operating Expenses					5,539,517
Net Cash Provided By (Used For) Operating Activities	(\$3,852,382)			(\$3,852,382)	(\$28,880)
Cash Flows From Non-Capital Financing Activities					
0021 Receipts From Local Sources - 6000	1			1	
0022 Receipts From State Sources - 7000	145,413			145,413	
0023 Receipts From Federal Sources -8000	3,929,545			3,929,545	
0024 Notes and Loans Received (Repaid)					
0025 Interest Paid on Notes/Loans - 5100-830					
0026 Operating Transfers In (Out)/Residual Equity Trans					
0027 Operating Transfers In (Out) Primary Government / Comp Unit					
0028 Receipts From Refund of Prior Year Expenditures - 6991					
0029 Special and Extraordinary Gains (losses)					
0030 Receipts from Insurance Recoveries -9990					
Net Cash Prov By (Used for) Non-Capital Financing Activities	\$4,074,959			\$4,074,959	
Cash Flows From Capital and Related Financing Activities					
0031 Payments For Fac Acq, Const, and Imp - 4000					
0032 Gain / (Loss) on Sale of Fixed Assets - 6930					
0033 Proceeds From Extended Term Financing - 9200					
0034 Principal Paid on Financing Agreements					
0035 Interest Paid on Financing Agreements - 5100-830					
0036 (Inc) Dec in Contributed Capital					
Net Cash Prov By (Used for) Capital and Related Financing Activities					
Cash Flows From Investing Activities					
0041 Earnings on Investments - 6500	53,425			53,425	6,458
0042 Purchase of Inv Securities / Deposits to Inv Pools					
0043 Receipts From Investment Pool Withdrawals					
0044 Proceeds from Sale and Maturity of Inv Securities					

LEA : 113384603 Lebanon SD

Printed 11/6/2023 9:58:45 AM

0045 Loans Received (Paid)

Net Cash Prov By (Used for) Investing Activities

\$53,425

\$53,425

\$6,458

	<u>Food Service</u> (51)	<u>Child Care Operations</u> (52)	<u>Other Enterprise</u> (58)	<u>TOTAL</u>	<u>Internal Service</u> (60)
Net Increase (Decrease) in Cash Flows	276,002			276,002	(22,422)
0004 Cash and Cash Equivalents Beginning of Year	5,113,672			5,113,672	1,102,819
Cash and Cash Equivalents at Year End	\$5,389,674			\$5,389,674	\$1,080,397
<hr/>					
Reconciliation of Operating Income (Loss) To Net Cash Provided by (Used For) Operating Activities					
0005 Operating Income (Loss) per REP	(4,041,584)			(4,041,584)	2,457
Adjustments					
0051 Depreciation and Net Amortization	67,426			67,426	
0052 Provision for Uncollectible Accounts					
0053 Other Adjustments	236,598			236,598	
Effect of Changes in Assets, Liabilities, Deferred Outflows and Deferred Inflows					
0054 (Inc) Dec In Accounts Receivable (0120-0150)	(2,210)			(2,210)	(64,455)
0055 Advances to Other Funds	(445,737)			(445,737)	
0056 (Inc) Dec in Inventories (0170)					
0057 (Inc) Dec in Prepaid Expenses (0180)					(4,817)
0058 (Inc) Dec in Other Current or Noncurrent Assets					
0064 Deferred Outflows (0910)	(34,698)			(34,698)	
0059 Inc (Dec) in Accounts Payable (0400-0450)	68,209			68,209	37,935
0060 Inc (Dec) in Accrued Salaries/Benefits (0461)	(2,040)			(2,040)	
0065 Inc (Dec) in Net Pension Liabilities (0570)	163,104			163,104	
0066 Inc (Dec) in Other Postemp Benefit Oblig (0560)	(25,134)			(25,134)	
0061 Inc (Dec) in Payroll Deductions/Withholding (0462)					
0062 Inc (Dec) in Unearned Revenue (0480)	92,203			92,203	
0063 Inc (Dec) in Other Current or Noncurrent Liabilities					
0067 Deferred Inflows (0950)	71,481			71,481	
Total Adjustments	\$189,202			\$189,202	(\$31,337)
Cash Provided By (Used for) Total	(\$3,852,382)			(\$3,852,382)	(\$28,880)

COMBINED STATEMENT OF CASH FLOWS
SCHEDULE OF NONCASH INVESTING, CAPITAL, AND FINANCING ACTIVITIES

Explanation of Transaction and Balance Sheet Effect	Amount
Total	

LEA : 113384603 Lebanon SD

Printed 11/6/2023 9:58:46 AM

Amounts Expressed in Whole Dollars	<u>Private Purpose Trust</u> (71)	<u>Investment Trust</u> (72)	<u>Pension Trust</u> (73)	<u>Student Activity Custodial</u> (81)
Assets And Deferred Outflows Of Resources				
Assets				
0100 Cash and Cash Equivalents	279,811			178,046
0110 Investments				
0130 Due From Other Funds				
0140 Due from Other Governments, Primary Government and Component Units				
0150 Other Receivables				
0170 Inventories				
0180 Prepaid Expenses (Expenditures)				
0190 Other Current Assets				
0220 Buildings and Building Improvements (Net)				
0230 Tangible Property and Intangible Right-To-Use Assets (Net)				
Total Assets	\$279,811			\$178,046
0910 Deferred Outflows of Resources				
Total Assets And Deferred Outflows Of Resources	\$279,811			\$178,046

LEA : 113384603 Lebanon SD

Printed 11/6/2023 9:58:46 AM

Amounts Expressed in Whole Dollars	<u>Other Custodial</u> (89)	<u>Fiduciary Component Units</u> (98)	<u>Total Fiduciary Funds</u>
Assets And Deferred Outflows Of Resources			
Assets			
0100 Cash and Cash Equivalents			457,857
0110 Investments			
0130 Due From Other Funds			
0140 Due from Other Governments, Primary Government and Component Units			
0150 Other Receivables			
0170 Inventories			
0180 Prepaid Expenses (Expenditures)			
0190 Other Current Assets			
0220 Buildings and Building Improvements (Net)			
0230 Tangible Property and Intangible Right-To-Use Assets (Net)			
Total Assets			\$457,857
0910 Deferred Outflows of Resources			
Total Assets And Deferred Outflows Of Resources			\$457,857

LEA : 113384603 Lebanon SD

Printed 11/6/2023 9:58:46 AM

Amounts Expressed in Whole Dollars

Private Purpose Trust
(71)

Investment Trust
(72)

Pension Trust
(73)

Student Activity Custodial
(81)

Liabilities, Deferred Inflows Of Resources And Net Position

Liabilities

- 0400 Due to Other Funds
- 0410 Due to Other Governments, Primary Government and Component Units
- 0420 Accounts Payable
- 0430 Contracts Payable
- 0450 Short-Term Payables
- 0460 Payroll Accruals and Withholdings
- 0480 Unearned Revenues
- 0490 Other Current Liabilities

Total Liabilities

- 0950 Deferred Inflows of Resources

Net Position

- 0791 Net Investment in Capital Assets
- 0009 Restricted Net Position (0792 – 0798)
- 0799 Unrestricted Net Position

Total Net Position

Total Liabilities, Deferred Inflows Of Resources And Net Position

279,811

178,046

\$279,811

\$178,046

\$279,811

\$178,046

LEA : 113384603 Lebanon SD

Printed 11/6/2023 9:58:46 AM

Amounts Expressed in Whole Dollars

Other Custodial
(89)

Fiduciary Component Units
(98)

Total Fiduciary Funds

Liabilities, Deferred Inflows Of Resources And Net Position

Liabilities

- 0400 Due to Other Funds
- 0410 Due to Other Governments, Primary Government and Component Units
- 0420 Accounts Payable
- 0430 Contracts Payable
- 0450 Short-Term Payables
- 0460 Payroll Accruals and Withholdings
- 0480 Unearned Revenues
- 0490 Other Current Liabilities

Total Liabilities

- 0950 Deferred Inflows of Resources

Net Position

- 0791 Net Investment in Capital Assets
- 0009 Restricted Net Position (0792 – 0798)
- 0799 Unrestricted Net Position

Total Net Position

Total Liabilities, Deferred Inflows Of Resources And Net Position

457,857

\$457,857

\$457,857

Amounts Expressed in Whole Dollars	<u>Private Purpose Trust</u> (71)	<u>Investment Trust</u> (72)	<u>Pension Trust</u> (73)	<u>Student Activity</u> <u>Custodial</u> (81)	<u>Other Custodial</u> (89)	<u>Fiduciary Component</u> <u>Units</u> (98)
Additions						
0091 Gifts and Contributions	41,616			248,123		
0095 Net Investment Earnings	1,717			258		
0092 Other Additions						
Deductions						
0093 Scholarships Awarded	25,767					
0094 Other Deductions				202,772		
Change In Net Position	\$17,566			\$45,609		
0006 Net Position – Beginning of Fiscal Year	262,245			132,437		
0007 Net Position Held in Trust for Pension Benefits						
Net Position - End of Fiscal Year	\$279,811			\$178,046		

LEA : 113384603 Lebanon SD

Printed 11/6/2023 9:58:47 AM

Amounts Expressed in Whole Dollars	<u>Total Fiduciary Funds</u>
Additions	
0091 Gifts and Contributions	289,739
0095 Net Investment Earnings	1,975
0092 Other Additions	
Deductions	
0093 Scholarships Awarded	25,767
0094 Other Deductions	202,772
Change In Net Position	\$63,175
0006 Net Position – Beginning of Fiscal Year	394,682
0007 Net Position Held in Trust for Pension Benefits	
Net Position - End of Fiscal Year	\$457,857

	<u>Revenue Reported In Current Year</u>	<u>Current Year Tax Accrual</u>	<u>Prior Year Tax Accrual</u>	<u>Taxes Collected In Current Year</u>
Revenue from Local Sources				
6111 Current Real Estate Taxes	17,253,566.54	59,460.79	28,613.86	17,222,719.61
6112 Interim Real Estate Taxes	79,435.45	11,214.94	768.73	68,989.24
6113 Public Utility Realty Taxes	19,968.33			19,968.33
6114 Payments in Lieu of Current Taxes - State / Local	71,907.03			71,907.03
6120 Current Per Capita Taxes, Section 679	20,286.69			20,286.69
6141 Current Act 511 Per Capita Taxes	20,286.69			20,286.69
6142 Current Act 511 Occupation Taxes - Flat Rate	20,181.66			20,181.66
6143 Current Act 511 Local Services Taxes	44,677.95	10,395.98	10,399.13	44,681.10
6151 Current Act 511 Earned Income Taxes	2,796,449.31	546,232.10	491,588.48	2,741,805.69
6153 Current Act 511 Real Estate Transfer Taxes	500,905.60	46,564.87	51,625.38	505,966.11
6411 Delinquent Real Estate Taxes	787,405.26	106,780.01	75,360.93	755,986.18
6420 Delinquent Per Capita Taxes, Section 679	10,735.63	1,602.30	3,450.77	12,584.10
6440 Delinquent Local Enabling Taxes - Flat Rate Assessments	21,444.91	3,192.56	6,857.27	25,109.62
6500 Earnings on Investments	1,734,002.63			
6700 Revenues from LEA Activities	47,131.00			
6821 State Revenue Received from Other Pennsylvania Public LEAs	1,152,000.00			
6831 Federal Revenue Received from Other Pennsylvania Public LEAs	152,643.53			
6832 Federal IDEA Revenue Received as Pass Through	1,277,733.00			
6910 Rentals	96,410.00			
6920 Contributions and Donations from Private Sources	12,500.00			
6941 Regular Day School Tuition	184.42			
6969 All Other Services Provided Other Governments	422,000.00			
6999 Other Revenues Not Specified Above	10,559.15			
TOTAL Revenue from Local Sources	\$26,552,414.78	\$785,443.55	\$668,664.55	\$21,530,472.05

**Revenue Reported
In Current Year**

Revenue from State Sources

7111 Basic Education Funding-Formula	37,780,317.21
7112 Basic Education Funding-Social Security	1,911,701.45
7120 Level Up Supplement	3,016,588.74
7160 Tuition for Orphans Subsidy	12,127.32
7240 Driver Education - Student	175.00
7250 Migratory Children	2,350.00
7271 Special Education funds for School-Aged Pupils	4,488,118.55
7311 Pupil Transportation Subsidy	936,261.55
7312 Nonpublic and Charter School Pupil Transportation Subsidy	17,710.00
7320 Rental and Sinking Fund Payments / Building Reimbursement Subsidy	1,674,098.19
7330 Health Services (Medical, Dental, Nurse, Act 25)	84,027.00
7340 State Property Tax Reduction Allocation	2,227,186.37
7505 Ready to Learn Block Grant	1,130,791.00
7506 PAsmart Grants	286,772.52
7820 State Share of Retirement Contributions	10,326,127.53
TOTAL Revenue from State Sources	\$63,894,352.43

	Revenue Reported In Current Year
<u>Revenue from Federal Sources</u>	
8514 Title I - Improving the Academic Achievement of the Disadvantaged	2,600,414.05
8515 Title II - Preparing, Training, and Recruiting High Quality Teachers and Principals	272,998.81
8516 Title III - Language Instruction for English Learners and Immigrant Students	243,480.01
8517 Title IV - 21st Century Schools	604,141.81
8690 Other Restricted Federal Grants-in-Aid Through the Commonwealth of PA	9,887.79
8732 ARRA - Qualified School Construction Bonds (QSCB)	795,782.40
8743 ESSER II - Elementary and Secondary School Emergency Relief Fund	4,297,609.67
8744 ARP ESSER - Elementary and Secondary School Emergency Relief Fund	10,834,099.43
8746 ARP IDEA	285,762.00
8751 ARP ESSER Learning Loss	242,054.33
8752 ARP ESSER Summer Programs	15,929.92
8753 ARP ESSER Afterschool Programs	94,976.28
8754 ARP ESSER Homeless Children and Youth Funds	92,332.91
8755 ARP ESSER Emergency Relief for Other Educational Entities	71,934.20
8810 School-Based Access Medicaid Reimbursement Program (SBAP) Reimbursements (Access)	224,331.79
8820 Medical Assistance Reimbursement for Administrative Claiming (Quarterly) Program	45,930.49
TOTAL Revenue from Federal Sources	\$20,731,665.89

	Revenue Reported In Current Year			
<u>Other Financing Sources</u>				
9220 Leases and Other Right-to-Use Arrangements	96,594.00			
TOTAL Other Financing Sources	\$96,594.00			
TOTAL FROM ALL SOURCES	\$111,275,027.10	\$785,443.55	\$668,664.55	\$21,530,472.05

	<u>General Fund (10)</u>	<u>Student Sponsored Activity Fund (21)</u>	<u>Public Purpose Trust (27)</u>	<u>Other Compt Approved (28)</u>	<u>Athletic / Activity (29)</u>	<u>Capital Reserve (690, 1850) (31)</u>
6000 Revenue from Local Sources						
6111 Current Real Estate Taxes	17,253,566.54					
6112 Interim Real Estate Taxes	79,435.45					
6113 Public Utility Realty Taxes	19,968.33					
6114 Payments in Lieu of Current Taxes - State / Local	71,907.03					
6120 Current Per Capita Taxes, Section 679	20,286.69					
6141 Current Act 511 Per Capita Taxes	20,286.69					
6142 Current Act 511 Occupation Taxes - Flat Rate	20,181.66					
6143 Current Act 511 Local Services Taxes	44,677.95					
6151 Current Act 511 Earned Income Taxes	2,796,449.31					
6153 Current Act 511 Real Estate Transfer Taxes	500,905.60					
6411 Delinquent Real Estate Taxes	787,405.26					
6420 Delinquent Per Capita Taxes, Section 679	10,735.63					
6440 Delinquent Local Enabling Taxes - Flat Rate Assessments	21,444.91					
6500 Earnings on Investments	1,734,002.63		893.95			
6700 Revenues from LEA Activities	47,131.00					
6821 State Revenue Received from Other Pennsylvania Public LEAs	1,152,000.00					
6831 Federal Revenue Received from Other Pennsylvania Public LEAs	152,643.53					
6832 Federal IDEA Revenue Received as Pass Through	1,277,733.00					
6910 Rentals	96,410.00					
6920 Contributions and Donations from Private Sources	12,500.00		79,820.18			
6941 Regular Day School Tuition	184.42					
6969 All Other Services Provided Other Governments	422,000.00					
6999 Other Revenues Not Specified Above	10,559.15					
6000 Total Revenue from Local Sources	\$26,552,414.78		\$80,714.13			
7000 Revenue from State Sources						
7111 Basic Education Funding-Formula	37,780,317.21					
7112 Basic Education Funding-Social Security	1,911,701.45					
7120 Level Up Supplement	3,016,588.74					
7160 Tuition for Orphans Subsidy	12,127.32					
7240 Driver Education - Student	175.00					
7250 Migratory Children	2,350.00					
7271 Special Education funds for School-Aged Pupils	4,488,118.55					
7311 Pupil Transportation Subsidy	936,261.55					
7312 Nonpublic and Charter School Pupil Transportation Subsidy	17,710.00					
7320 Rental and Sinking Fund Payments / Building Reimbursement Subsidy	1,674,098.19					

LEA : 113384603 Lebanon SD

Printed 11/6/2023 9:58:51 AM

	<u>Capital Reserve</u> <u>(1431) (32)</u>	<u>Other Capital</u> <u>Projects Fund (39)</u>	<u>Debt Service (40)</u>	<u>Permanent (90)</u>	<u>Total</u>
6000 Revenue from Local Sources					
6111 Current Real Estate Taxes					17,253,566.54
6112 Interim Real Estate Taxes					79,435.45
6113 Public Utility Realty Taxes					19,968.33
6114 Payments in Lieu of Current Taxes - State / Local					71,907.03
6120 Current Per Capita Taxes, Section 679					20,286.69
6141 Current Act 511 Per Capita Taxes					20,286.69
6142 Current Act 511 Occupation Taxes - Flat Rate					20,181.66
6143 Current Act 511 Local Services Taxes					44,677.95
6151 Current Act 511 Earned Income Taxes					2,796,449.31
6153 Current Act 511 Real Estate Transfer Taxes					500,905.60
6411 Delinquent Real Estate Taxes					787,405.26
6420 Delinquent Per Capita Taxes, Section 679					10,735.63
6440 Delinquent Local Enabling Taxes - Flat Rate Assessments					21,444.91
6500 Earnings on Investments		87,998.51	2,709.00		1,825,604.09
6700 Revenues from LEA Activities					47,131.00
6821 State Revenue Received from Other Pennsylvania Public LEAs					1,152,000.00
6831 Federal Revenue Received from Other Pennsylvania Public LEAs					152,643.53
6832 Federal IDEA Revenue Received as Pass Through					1,277,733.00
6910 Rentals					96,410.00
6920 Contributions and Donations from Private Sources					92,320.18
6941 Regular Day School Tuition					184.42
6969 All Other Services Provided Other Governments					422,000.00
6999 Other Revenues Not Specified Above					10,559.15
6000 Total Revenue from Local Sources		\$87,998.51	\$2,709.00		\$26,723,836.42
7000 Revenue from State Sources					
7111 Basic Education Funding-Formula					37,780,317.21
7112 Basic Education Funding-Social Security					1,911,701.45
7120 Level Up Supplement					3,016,588.74
7160 Tuition for Orphans Subsidy					12,127.32
7240 Driver Education - Student					175.00
7250 Migratory Children					2,350.00
7271 Special Education funds for School-Aged Pupils					4,488,118.55
7311 Pupil Transportation Subsidy					936,261.55
7312 Nonpublic and Charter School Pupil Transportation Subsidy					17,710.00
7320 Rental and Sinking Fund Payments / Building Reimbursement Subsidy					1,674,098.19

	<u>General Fund (10)</u>	<u>Student Sponsored Activity Fund (21)</u>	<u>Public Purpose Trust (27)</u>	<u>Other Compt Approved (28)</u>	<u>Athletic / Activity (29)</u>	<u>Capital Reserve (690, 1850) (31)</u>
7000 Revenue from State Sources						
7330 Health Services (Medical, Dental, Nurse, Act 25)	84,027.00					
7340 State Property Tax Reduction Allocation	2,227,186.37					
7505 Ready to Learn Block Grant	1,130,791.00					
7506 PAsmart Grants	286,772.52					
7820 State Share of Retirement Contributions	10,326,127.53					
7000 Total Revenue from State Sources	\$63,894,352.43					
8000 Revenue from Federal Sources						
8514 Title I - Improving the Academic Achievement of the Disadvantaged	2,600,414.05					
8515 Title II - Preparing, Training, and Recruiting High Quality Teachers and Principals	272,998.81					
8516 Title III - Language Instruction for English Learners and Immigrant Students	243,480.01					
8517 Title IV - 21st Century Schools	604,141.81					
8690 Other Restricted Federal Grants-in-Aid Through the Commonwealth of PA	9,887.79					
8732 ARRA - Qualified School Construction Bonds (QSCB)	795,782.40					
8743 ESSER II - Elementary and Secondary School Emergency Relief Fund	4,297,609.67					
8744 ARP ESSER - Elementary and Secondary School Emergency Relief Fund	10,834,099.43					
8746 ARP IDEA	285,762.00					
8751 ARP ESSER Learning Loss	242,054.33					
8752 ARP ESSER Summer Programs	15,929.92					
8753 ARP ESSER Afterschool Programs	94,976.28					
8754 ARP ESSER Homeless Children and Youth Funds	92,332.91					
8755 ARP ESSER Emergency Relief for Other Educational Entities	71,934.20					
8810 School-Based Access Medicaid Reimbursement Program (SBAP) Reimbursements (Access)	224,331.79					
8820 Medical Assistance Reimbursement for Administrative Claiming (Quarterly) Program	45,930.49					
8000 Total Revenue from Federal Sources	\$20,731,665.89					
9000 Other Financing Sources						
9110 Face Value of Bonds Issued						
9130 Bond Premiums						
9220 Leases and Other Right-to-Use Arrangements						
9310 General Fund Transfers						
9000 Total Other Financing Sources	\$96,594.00					
Total From All Sources	\$111,275,027.10			\$80,714.13		

LEA : 113384603 Lebanon SD

Printed 11/6/2023 9:58:51 AM

	<u>Capital Reserve</u> (1431) (32)	<u>Other Capital</u> <u>Projects Fund (39)</u>	<u>Debt Service (40)</u>	<u>Permanent (90)</u>	<u>Total</u>
7000 Revenue from State Sources					
7330 Health Services (Medical, Dental, Nurse, Act 25)					84,027.00
7340 State Property Tax Reduction Allocation					2,227,186.37
7505 Ready to Learn Block Grant					1,130,791.00
7506 PAsmart Grants					286,772.52
7820 State Share of Retirement Contributions					10,326,127.53
7000 Total Revenue from State Sources					\$63,894,352.43
8000 Revenue from Federal Sources					
8514 Title I - Improving the Academic Achievement of the Disadvantaged					2,600,414.05
8515 Title II - Preparing, Training, and Recruiting High Quality Teachers and Principals					272,998.81
8516 Title III - Language Instruction for English Learners and Immigrant Students					243,480.01
8517 Title IV - 21st Century Schools					604,141.81
8690 Other Restricted Federal Grants-in-Aid Through the Commonwealth of PA					9,887.79
8732 ARRA - Qualified School Construction Bonds (QSCB)					795,782.40
8743 ESSER II - Elementary and Secondary School Emergency Relief Fund					4,297,609.67
8744 ARP ESSER - Elementary and Secondary School Emergency Relief Fund					10,834,099.43
8746 ARP IDEA					285,762.00
8751 ARP ESSER Learning Loss					242,054.33
8752 ARP ESSER Summer Programs					15,929.92
8753 ARP ESSER Afterschool Programs					94,976.28
8754 ARP ESSER Homeless Children and Youth Funds					92,332.91
8755 ARP ESSER Emergency Relief for Other Educational Entities					71,934.20
8810 School-Based Access Medicaid Reimbursement Program (SBAP) Reimbursements (Access)					224,331.79
8820 Medical Assistance Reimbursement for Administrative Claiming (Quarterly) Program					45,930.49
8000 Total Revenue from Federal Sources					\$20,731,665.89
9000 Other Financing Sources					
9110 Face Value of Bonds Issued		9,970,000.00			9,970,000.00
9130 Bond Premiums		26,885.75			26,885.75
9220 Leases and Other Right-to-Use Arrangements					96,594.00
9310 General Fund Transfers			5,000.00		5,000.00
9000 Total Other Financing Sources		\$9,996,885.75	\$5,000.00		\$10,098,479.75
Total From All Sources		\$10,084,884.26	\$7,709.00		\$121,448,334.49

	<u>General Fund (10)</u>	<u>Student Sponsored Activity Fund (21)</u>	<u>Public Purpose Trust (27)</u>	<u>Other Compt Approved (28)</u>	<u>Athletic / Activity (29)</u>	<u>Capital Reserve (690, 1850) (31)</u>
Revenue from Local Sources	26,552,414.78		80,714.13			
Revenue from State Sources	63,894,352.43					
Revenue from Federal Sources	20,731,665.89					
Other Financing Sources	96,594.00					
Total From All Sources	\$111,275,027.10		\$80,714.13			

LEA : 113384603 Lebanon SD

Printed 11/6/2023 9:58:53 AM

	<u>Capital Reserve (1431)</u> <u>(32)</u>	<u>Other Capital Projects</u> <u>Fund (39)</u>	<u>Debt Service (40)</u>	<u>Permanent (90)</u>	<u>Total</u>
Revenue from Local Sources		87,998.51	2,709.00		26,723,836.42
Revenue from State Sources					63,894,352.43
Revenue from Federal Sources					20,731,665.89
Other Financing Sources		9,996,885.75	5,000.00		10,098,479.75
Total From All Sources		\$10,084,884.26	\$7,709.00		\$121,448,334.49

General Fund (10)

1000 Instruction

Total

100 Personnel Services – Salaries

100 Personnel Services – Salaries

24,732,541.50

Total Personnel Services – Salaries

\$24,732,541.50

200 Personnel Services – Employee Benefits

210 Group Insurance – Contracted Provider

318,877.52

220 Social Security Contributions

1,841,939.78

230 PSERS Retirement Contributions

8,583,536.35

250 Unemployment Compensation

(925.82)

260 Workers' Compensation

98,615.09

270 Group Insurance – Self-Insurance

3,747,008.26

291 Other Retirement Plans

100,240.00

Total Personnel Services – Employee Benefits

\$14,689,291.18

300 Purchased Professional and Technical Services

322 Professional Educational Services – Ius

3,986,117.75

329 Professional Educational Services – Other

42,418.63

330 Other Professional Services

270,434.25

Total Purchased Professional and Technical Services

\$4,298,970.63

400 Purchased Property Services

430 Repairs and Maintenance Services

14,252.62

440 Rentals

173,381.69

Total Purchased Property Services

\$187,634.31

500 Other Purchased Services

510 Student Transportation Services

125,104.04

530 Communications

20.21

541 Advertising Related to Federal Grant Awards

1,593.88

550 Printing and Binding

24,509.62

561 Tuition To Other School Districts Within the State

1,923,113.96

562 Tuition To Pennsylvania Charter Schools

2,381,688.80

564 Tuition To Career and Technology Centers

1,231,130.00

566 Tuition To Institutions of Higher Education and Technical Institutes

23,585.50

567 Tuition To Approved Private Schools (APS) and PA Chartered Schools for the Deaf and Blind

50,444.22

568 Tuition To Private Residential Rehabilitative Institutions (PRRI) [In-State] and Detention Centers

11,724.56

580 Travel

7,497.88

594 IU Payment By Withholding for Institutionalized Children's Programs – Special Classes

2,418.48

Total Other Purchased Services

\$5,782,831.15

600 Supplies

610 General Supplies

1,473,635.96

630 Food

10,266.51

640 Books and Periodicals

918,087.67

650 Supplies & Fees – Technology Related

4,209.17

Total Supplies

\$2,406,199.31

700 Property

738 Technology Software Lease and Other Right-to-Use Arrangements

30,946.00

LEA : 113384603 Lebanon SD

Printed 11/6/2023 9:58:57 AM

General Fund (10)

1000 Instruction

Total

700 Property

752 Capital Equipment – Original and Additional

78,589.26

Total Property

\$109,535.26

800 Other Objects

810 Dues and Fees

22,074.71

Total Other Objects

\$22,074.71

Total 1000 Instruction

\$52,229,078.05

General Fund (10)

	<u>Elementary</u>	<u>Secondary</u>	<u>Federal</u>	<u>Total</u>
1100 Regular Programs – Elementary / Secondary				
100 Personnel Services – Salaries				
100 Personnel Services – Salaries	7,743,846.84	7,093,003.65	3,533,110.74	18,369,961.23
Total Personnel Services – Salaries	\$7,743,846.84	\$7,093,003.65	\$3,533,110.74	\$18,369,961.23
200 Personnel Services – Employee Benefits				
210 Group Insurance – Contracted Provider	105,505.58	82,035.56	48,850.17	236,391.31
220 Social Security Contributions	575,738.20	531,989.58	261,398.09	1,369,125.87
230 PSERS Retirement Contributions	3,037,552.50	2,694,501.67	637,624.79	6,369,678.96
250 Unemployment Compensation	(400.56)	(287.21)		(687.77)
260 Workers' Compensation	35,300.66	25,311.74		60,612.40
270 Group Insurance – Self-Insurance	1,243,379.44	979,421.73	567,218.73	2,790,019.90
291 Other Retirement Plans	58,379.78	41,860.22		100,240.00
Total Personnel Services – Employee Benefits	\$5,055,455.60	\$4,354,833.29	\$1,515,091.78	\$10,925,380.67
300 Purchased Professional and Technical Services				
322 Professional Educational Services – Ius	2,322.09	391,225.25		393,547.34
329 Professional Educational Services – Other	17,185.83	23,073.00		40,258.83
330 Other Professional Services		3,200.00		3,200.00
Total Purchased Professional and Technical Services	\$19,507.92	\$417,498.25		\$437,006.17
400 Purchased Property Services				
430 Repairs and Maintenance Services	7,296.16	6,956.46		14,252.62
440 Rentals		2,790.08	115.00	2,905.08
Total Purchased Property Services	\$7,296.16	\$9,746.54	\$115.00	\$17,157.70
500 Other Purchased Services				
510 Student Transportation Services	6,008.59	2,209.65		8,218.24
530 Communications	6.50	13.71		20.21
541 Advertising Related to Federal Grant Awards			1,593.88	1,593.88
550 Printing and Binding	16,248.42	8,261.20		24,509.62
561 Tuition To Other School Districts Within the State	124,971.27	89,608.52		214,579.79
562 Tuition To Pennsylvania Charter Schools	790,771.42	567,009.17		1,357,780.59
566 Tuition To Institutions of Higher Education and Technical Institutes		23,585.50		23,585.50
568 Tuition To Private Residential Rehabilitative Institutions (PRRI) [In-State] and Detention Centers	6,828.38	4,896.18		11,724.56
580 Travel	1,323.59	4,135.69		5,459.28
Total Other Purchased Services	\$946,158.17	\$699,719.62	\$1,593.88	\$1,647,471.67
600 Supplies				
610 General Supplies	341,275.64	321,646.57	730,463.50	1,393,385.71
630 Food	7,867.33	757.23		8,624.56
640 Books and Periodicals	61,771.86	37,645.20	818,670.61	918,087.67
650 Supplies & Fees – Technology Related	1,592.19	2,616.98		4,209.17
Total Supplies	\$412,507.02	\$362,665.98	\$1,549,134.11	\$2,324,307.11
700 Property				
738 Technology Software Lease and Other Right-to-Use Arrangements			30,946.00	30,946.00
752 Capital Equipment – Original and Additional	1,754.24	76,835.02		78,589.26
Total Property	\$1,754.24	\$76,835.02	\$30,946.00	\$109,535.26

LEA : 113384603 Lebanon SD

Printed 11/6/2023 9:58:57 AM

General Fund (10)

	<u>Elementary</u>	<u>Secondary</u>	<u>Federal</u>	<u>Total</u>
1100 Regular Programs – Elementary / Secondary				
800 Other Objects				
810 Dues and Fees	6,079.68	7,493.03	6,975.00	20,547.71
Total Other Objects	\$6,079.68	\$7,493.03	\$6,975.00	\$20,547.71
Total 1100 Regular Programs – Elementary / Secondary	\$14,192,605.63	\$13,021,795.38	\$6,636,966.51	\$33,851,367.52

General Fund (10)

1110 Regular Programs

	<u>Elementary</u>	<u>Secondary</u>	<u>Federal</u>	<u>Total</u>
100 Personnel Services – Salaries				
100 Personnel Services – Salaries	7,743,846.84	7,093,003.65	3,533,110.74	18,369,961.23
Total Personnel Services – Salaries	\$7,743,846.84	\$7,093,003.65	\$3,533,110.74	\$18,369,961.23
200 Personnel Services – Employee Benefits				
210 Group Insurance – Contracted Provider	105,505.58	82,035.56	48,850.17	236,391.31
220 Social Security Contributions	575,738.20	531,989.58	261,398.09	1,369,125.87
230 PSERS Retirement Contributions	3,037,552.50	2,694,501.67	637,624.79	6,369,678.96
250 Unemployment Compensation	(400.56)	(287.21)		(687.77)
260 Workers' Compensation	35,300.66	25,311.74		60,612.40
270 Group Insurance – Self-Insurance	1,243,379.44	979,421.73	567,218.73	2,790,019.90
291 Other Retirement Plans	58,379.78	41,860.22		100,240.00
Total Personnel Services – Employee Benefits	\$5,055,455.60	\$4,354,833.29	\$1,515,091.78	\$10,925,380.67
300 Purchased Professional and Technical Services				
322 Professional Educational Services – Ius	2,322.09	391,225.25		393,547.34
329 Professional Educational Services – Other	17,185.83	23,073.00		40,258.83
330 Other Professional Services		3,200.00		3,200.00
Total Purchased Professional and Technical Services	\$19,507.92	\$417,498.25		\$437,006.17
400 Purchased Property Services				
430 Repairs and Maintenance Services	7,296.16	6,956.46		14,252.62
440 Rentals		2,790.08	115.00	2,905.08
Total Purchased Property Services	\$7,296.16	\$9,746.54	\$115.00	\$17,157.70
500 Other Purchased Services				
510 Student Transportation Services	6,008.59	2,209.65		8,218.24
530 Communications	6.50	13.71		20.21
541 Advertising Related to Federal Grant Awards			1,593.88	1,593.88
550 Printing and Binding	16,248.42	8,261.20		24,509.62
561 Tuition To Other School Districts Within the State	124,971.27	89,608.52		214,579.79
562 Tuition To Pennsylvania Charter Schools	790,771.42	567,009.17		1,357,780.59
566 Tuition To Institutions of Higher Education and Technical Institutes		23,585.50		23,585.50
568 Tuition To Private Residential Rehabilitative Institutions (PRRI) [In-State] and Detention Centers	6,828.38	4,896.18		11,724.56
580 Travel	1,323.59	4,135.69		5,459.28
Total Other Purchased Services	\$946,158.17	\$699,719.62	\$1,593.88	\$1,647,471.67
600 Supplies				
610 General Supplies	341,275.64	321,646.57	730,463.50	1,393,385.71
630 Food	7,867.33	757.23		8,624.56
640 Books and Periodicals	61,771.86	37,645.20	818,670.61	918,087.67
650 Supplies & Fees – Technology Related	1,592.19	2,616.98		4,209.17
Total Supplies	\$412,507.02	\$362,665.98	\$1,549,134.11	\$2,324,307.11
700 Property				
738 Technology Software Lease and Other Right-to-Use Arrangements			30,946.00	30,946.00
752 Capital Equipment – Original and Additional	1,754.24	76,835.02		78,589.26
Total Property	\$1,754.24	\$76,835.02	\$30,946.00	\$109,535.26

LEA : 113384603 Lebanon SD

Printed 11/6/2023 9:58:57 AM

General Fund (10)

	<u>Elementary</u>	<u>Secondary</u>	<u>Federal</u>	<u>Total</u>
1110 Regular Programs				
800 <u>Other Objects</u>				
810 Dues and Fees	6,079.68	7,493.03	6,975.00	20,547.71
Total Other Objects	\$6,079.68	\$7,493.03	\$6,975.00	\$20,547.71
Total 1110 Regular Programs	\$14,192,605.63	\$13,021,795.38	\$6,636,966.51	\$33,851,367.52

General Fund (10)

	<u>Elementary</u>	<u>Secondary</u>	<u>Federal</u>	<u>Total</u>
1200 Special Programs – Elementary / Secondary				
100 Personnel Services – Salaries				
100 Personnel Services – Salaries	2,006,986.91	1,948,576.74	377,938.89	4,333,502.54
Total Personnel Services – Salaries	\$2,006,986.91	\$1,948,576.74	\$377,938.89	\$4,333,502.54
200 Personnel Services – Employee Benefits				
210 Group Insurance – Contracted Provider	25,515.54	17,267.73	4,138.35	46,921.62
220 Social Security Contributions	151,219.60	145,443.51	27,274.01	323,937.12
230 PSERS Retirement Contributions	742,833.48	705,588.24	63,324.77	1,511,746.49
250 Unemployment Compensation	(96.71)	(65.43)		(162.14)
260 Workers' Compensation	15,437.08	10,446.26		25,883.34
270 Group Insurance – Self-Insurance	300,638.66	203,455.97	42,610.68	546,705.31
Total Personnel Services – Employee Benefits	\$1,235,547.65	\$1,082,136.28	\$137,347.81	\$2,455,031.74
300 Purchased Professional and Technical Services				
322 Professional Educational Services – Ius	1,257,705.93	900,185.37	1,429,357.51	3,587,248.81
329 Professional Educational Services – Other			2,159.80	2,159.80
330 Other Professional Services	126,829.14	90,940.68	5,312.73	223,082.55
Total Purchased Professional and Technical Services	\$1,384,535.07	\$991,126.05	\$1,436,830.04	\$3,812,491.16
400 Purchased Property Services				
440 Rentals	821.88	589.32		1,411.20
Total Purchased Property Services	\$821.88	\$589.32		\$1,411.20
500 Other Purchased Services				
510 Student Transportation Services	64.26	46.07		110.33
561 Tuition To Other School Districts Within the State	841,096.64	603,094.03	137,674.07	1,581,864.74
562 Tuition To Pennsylvania Charter Schools	596,324.14	427,584.07		1,023,908.21
567 Tuition To Approved Private Schools (APS) and PA Chartered Schools for the Deaf and Blind	29,378.71	21,065.51		50,444.22
580 Travel	462.69	331.75		794.44
594 IU Payment By Withholding for Institutionalized Children’s Programs – Special Classes	1,408.52	1,009.96		2,418.48
Total Other Purchased Services	\$1,468,734.96	\$1,053,131.39	\$137,674.07	\$2,659,540.42
600 Supplies				
610 General Supplies	2,661.50	1,375.75		4,037.25
630 Food	542.77	389.18		931.95
Total Supplies	\$3,204.27	\$1,764.93		\$4,969.20
800 Other Objects				
810 Dues and Fees	871.86	625.14		1,497.00
Total Other Objects	\$871.86	\$625.14		\$1,497.00
Total 1200 Special Programs – Elementary / Secondary	\$6,100,702.60	\$5,077,949.85	\$2,089,790.81	\$13,268,443.26

LEA : 113384603 Lebanon SD

Printed 11/6/2023 9:58:57 AM

General Fund (10)

	<u>Elementary</u>	<u>Secondary</u>	<u>Federal</u>	<u>Total</u>
1210 Life Skills Support				
100 Personnel Services – Salaries				
100 Personnel Services – Salaries	314,883.25	284,616.99	56,682.00	656,182.24
Total Personnel Services – Salaries	\$314,883.25	\$284,616.99	\$56,682.00	\$656,182.24
200 Personnel Services – Employee Benefits				
210 Group Insurance – Contracted Provider	3,767.74	2,701.60	312.12	6,781.46
220 Social Security Contributions	23,685.41	21,033.58	4,336.12	49,055.11
230 PSERS Retirement Contributions	115,533.33	104,212.93	9,552.23	229,298.49
250 Unemployment Compensation	(14.30)	(10.25)		(24.55)
260 Workers' Compensation	2,282.59	1,636.69		3,919.28
270 Group Insurance – Self-Insurance	44,403.04	31,838.44	3,000.00	79,241.48
Total Personnel Services – Employee Benefits	\$189,657.81	\$161,412.99	\$17,200.47	\$368,271.27
300 Purchased Professional and Technical Services				
322 Professional Educational Services – Ius	38,307.36	27,467.64		65,775.00
Total Purchased Professional and Technical Services	\$38,307.36	\$27,467.64		\$65,775.00
500 Other Purchased Services				
561 Tuition To Other School Districts Within the State	22,877.39	16,403.85		39,281.24
580 Travel	23.30	16.70		40.00
Total Other Purchased Services	\$22,900.69	\$16,420.55		\$39,321.24
600 Supplies				
610 General Supplies	387.19	277.62		664.81
Total Supplies	\$387.19	\$277.62		\$664.81
Total 1210 Life Skills Support	\$566,136.30	\$490,195.79	\$73,882.47	\$1,130,214.56

General Fund (10)

	<u>Elementary</u>	<u>Secondary</u>	<u>Federal</u>	<u>Total</u>
1220 Sensory Support				
100 Personnel Services – Salaries				
100 Personnel Services – Salaries	242,979.62	131,663.48	48,746.88	423,389.98
Total Personnel Services – Salaries	\$242,979.62	\$131,663.48	\$48,746.88	\$423,389.98
200 Personnel Services – Employee Benefits				
210 Group Insurance – Contracted Provider	2,465.44	1,767.79	531.15	4,764.38
220 Social Security Contributions	18,107.01	9,727.32	3,688.61	31,522.94
230 PSERS Retirement Contributions	90,234.75	49,947.14	8,594.05	148,775.94
250 Unemployment Compensation	(9.23)	(6.61)		(15.84)
260 Workers' Compensation	1,472.80	1,056.04		2,528.84
270 Group Insurance – Self-Insurance	28,992.24	20,788.39	5,284.44	55,065.07
Total Personnel Services – Employee Benefits	\$141,263.01	\$83,280.07	\$18,098.25	\$242,641.33
300 Purchased Professional and Technical Services				
322 Professional Educational Services – Ius	276,294.06	198,111.96		474,406.02
330 Other Professional Services	41,599.67	29,828.33		71,428.00
Total Purchased Professional and Technical Services	\$317,893.73	\$227,940.29		\$545,834.02
500 Other Purchased Services				
561 Tuition To Other School Districts Within the State	6,914.99	4,958.28		11,873.27
580 Travel	113.26	81.21		194.47
Total Other Purchased Services	\$7,028.25	\$5,039.49		\$12,067.74
600 Supplies				
610 General Supplies	366.12	59.78		425.90
Total Supplies	\$366.12	\$59.78		\$425.90
800 Other Objects				
810 Dues and Fees	616.18	441.82		1,058.00
Total Other Objects	\$616.18	\$441.82		\$1,058.00
Total 1220 Sensory Support	\$710,146.91	\$448,424.93	\$66,845.13	\$1,225,416.97

LEA : 113384603 Lebanon SD

Printed 11/6/2023 9:58:57 AM

General Fund (10)

1230 Emotional Support

	<u>Elementary</u>	<u>Secondary</u>	<u>Federal</u>	<u>Total</u>
100 Personnel Services – Salaries				
100 Personnel Services – Salaries	481,074.20	454,504.72	96,367.16	1,031,946.08
Total Personnel Services – Salaries	\$481,074.20	\$454,504.72	\$96,367.16	\$1,031,946.08
200 Personnel Services – Employee Benefits				
210 Group Insurance – Contracted Provider	5,925.35	4,248.65	312.12	10,486.12
220 Social Security Contributions	37,187.53	33,677.20	6,226.37	77,091.10
230 PSERS Retirement Contributions	182,856.93	163,544.31	14,230.30	360,631.54
250 Unemployment Compensation	(22.49)	(16.12)		(38.61)
260 Workers' Compensation	3,589.71	2,573.94		6,163.65
270 Group Insurance – Self-Insurance	69,830.52	50,070.78	3,000.00	122,901.30
Total Personnel Services – Employee Benefits	\$299,367.55	\$254,098.76	\$23,768.79	\$577,235.10
300 Purchased Professional and Technical Services				
322 Professional Educational Services – Ius	558,003.03	400,106.57	1,408,722.51	2,366,832.11
330 Other Professional Services	85,223.65	61,108.17		146,331.82
Total Purchased Professional and Technical Services	\$643,226.68	\$461,214.74	\$1,408,722.51	\$2,513,163.93
500 Other Purchased Services				
561 Tuition To Other School Districts Within the State	748,742.54	536,873.09	137,674.07	1,423,289.70
580 Travel	117.41	84.18		201.59
Total Other Purchased Services	\$748,859.95	\$536,957.27	\$137,674.07	\$1,423,491.29
600 Supplies				
610 General Supplies	882.46	302.87		1,185.33
Total Supplies	\$882.46	\$302.87		\$1,185.33
Total 1230 Emotional Support	\$2,173,410.84	\$1,707,078.36	\$1,666,532.53	\$5,547,021.73

General Fund (10)

	<u>Elementary</u>	<u>Secondary</u>	<u>Federal</u>	<u>Total</u>
1240 Academic Support				
100 Personnel Services – Salaries				
100 Personnel Services – Salaries	917,711.49	969,218.30	75,805.00	1,962,734.79
Total Personnel Services – Salaries	\$917,711.49	\$969,218.30	\$75,805.00	\$1,962,734.79
200 Personnel Services – Employee Benefits				
210 Group Insurance – Contracted Provider	11,868.42	7,482.33	1,188.36	20,539.11
220 Social Security Contributions	68,441.44	73,050.21	5,536.66	147,028.31
230 PSERS Retirement Contributions	326,803.53	342,677.49	13,311.48	682,792.50
250 Unemployment Compensation	(45.04)	(28.40)		(73.44)
260 Workers' Compensation	7,190.16	4,532.96		11,723.12
270 Group Insurance – Self-Insurance	139,869.77	88,179.39	17,927.64	245,976.80
Total Personnel Services – Employee Benefits	\$554,128.28	\$515,893.98	\$37,964.14	\$1,107,986.40
300 Purchased Professional and Technical Services				
322 Professional Educational Services – Ius	1,630.72	1,169.28		2,800.00
Total Purchased Professional and Technical Services	\$1,630.72	\$1,169.28		\$2,800.00
500 Other Purchased Services				
510 Student Transportation Services	64.26	46.07		110.33
561 Tuition To Other School Districts Within the State	33,552.62	24,058.34		57,610.96
580 Travel	208.72	149.66		358.38
Total Other Purchased Services	\$33,825.60	\$24,254.07		\$58,079.67
600 Supplies				
610 General Supplies	459.80	329.69		789.49
630 Food	542.77	389.18		931.95
Total Supplies	\$1,002.57	\$718.87		\$1,721.44
800 Other Objects				
810 Dues and Fees	255.68	183.32		439.00
Total Other Objects	\$255.68	\$183.32		\$439.00
Total 1240 Academic Support	\$1,508,554.34	\$1,511,437.82	\$113,769.14	\$3,133,761.30

LEA : 113384603 Lebanon SD

Printed 11/6/2023 9:58:57 AM

General Fund (10)

1241 Learning Support – Public

	<u>Elementary</u>	<u>Secondary</u>	<u>Federal</u>	<u>Total</u>
100 Personnel Services – Salaries				
100 Personnel Services – Salaries	848,136.49	969,218.30		1,817,354.79
Total Personnel Services – Salaries	\$848,136.49	\$969,218.30		\$1,817,354.79
200 Personnel Services – Employee Benefits				
210 Group Insurance – Contracted Provider	10,435.12	7,482.33		17,917.45
220 Social Security Contributions	63,470.79	73,050.21		136,521.00
230 PSERS Retirement Contributions	294,518.69	337,118.62		631,637.31
250 Unemployment Compensation	(39.60)	(28.40)		(68.00)
260 Workers' Compensation	6,321.83	4,532.96		10,854.79
270 Group Insurance – Self-Insurance	122,978.15	88,179.39		211,157.54
Total Personnel Services – Employee Benefits	\$497,684.98	\$510,335.11		\$1,008,020.09
500 Other Purchased Services				
561 Tuition To Other School Districts Within the State	33,552.62	24,058.34		57,610.96
Total Other Purchased Services	\$33,552.62	\$24,058.34		\$57,610.96
600 Supplies				
610 General Supplies	252.56	181.09		433.65
630 Food	542.77	389.18		931.95
Total Supplies	\$795.33	\$570.27		\$1,365.60
800 Other Objects				
810 Dues and Fees	69.31	49.69		119.00
Total Other Objects	\$69.31	\$49.69		\$119.00
Total 1241 Learning Support – Public	\$1,380,238.73	\$1,504,231.71		\$2,884,470.44

General Fund (10)

1243 Gifted Support

	<u>Elementary</u>	<u>Secondary</u>	<u>Federal</u>	<u>Total</u>
100 Personnel Services – Salaries				
100 Personnel Services – Salaries	69,575.00		75,805.00	145,380.00
Total Personnel Services – Salaries	\$69,575.00		\$75,805.00	\$145,380.00
200 Personnel Services – Employee Benefits				
210 Group Insurance – Contracted Provider	1,433.30		1,188.36	2,621.66
220 Social Security Contributions	4,970.65		5,536.66	10,507.31
230 PSERS Retirement Contributions	32,284.84	5,558.87	13,311.48	51,155.19
250 Unemployment Compensation	(5.44)			(5.44)
260 Workers' Compensation	868.33			868.33
270 Group Insurance – Self-Insurance	16,891.62		17,927.64	34,819.26
Total Personnel Services – Employee Benefits	\$56,443.30	\$5,558.87	\$37,964.14	\$99,966.31
300 Purchased Professional and Technical Services				
322 Professional Educational Services – Ius	1,630.72	1,169.28		2,800.00
Total Purchased Professional and Technical Services	\$1,630.72	\$1,169.28		\$2,800.00
500 Other Purchased Services				
510 Student Transportation Services	64.26	46.07		110.33
580 Travel	208.72	149.66		358.38
Total Other Purchased Services	\$272.98	\$195.73		\$468.71
600 Supplies				
610 General Supplies	207.24	148.60		355.84
Total Supplies	\$207.24	\$148.60		\$355.84
800 Other Objects				
810 Dues and Fees	186.37	133.63		320.00
Total Other Objects	\$186.37	\$133.63		\$320.00
Total 1243 Gifted Support	\$128,315.61	\$7,206.11	\$113,769.14	\$249,290.86

LEA : 113384603 Lebanon SD

Printed 11/6/2023 9:58:57 AM

General Fund (10)

	<u>Elementary</u>	<u>Secondary</u>	<u>Federal</u>	<u>Total</u>
1270 Multi-Handicapped Support				
300 <u>Purchased Professional and Technical Services</u>				
322 Professional Educational Services – Ius	242,321.86	173,752.76		416,074.62
Total Purchased Professional and Technical Services	\$242,321.86	\$173,752.76		\$416,074.62
500 <u>Other Purchased Services</u>				
561 Tuition To Other School Districts Within the State	159.92	114.66		274.58
Total Other Purchased Services	\$159.92	\$114.66		\$274.58
Total 1270 Multi-Handicapped Support	\$242,481.78	\$173,867.42		\$416,349.20

General Fund (10)

1280 Early Intervention Support

300 Purchased Professional and Technical Services

322 Professional Educational Services – Ius

Total Purchased Professional and Technical Services

Total 1280 Early Intervention Support

	<u>Elementary</u>	<u>Secondary</u>	<u>Federal</u>	<u>Total</u>
	2,275.00		9,844.00	12,119.00
	\$2,275.00		\$9,844.00	\$12,119.00
	\$2,275.00		\$9,844.00	\$12,119.00

LEA : 113384603 Lebanon SD

Printed 11/6/2023 9:58:57 AM

General Fund (10)

1290 Special Programs - Other Support

	<u>Elementary</u>	<u>Secondary</u>	<u>Federal</u>	<u>Total</u>
100 Personnel Services – Salaries				
100 Personnel Services – Salaries	50,338.35	108,573.25	100,337.85	259,249.45
Total Personnel Services – Salaries	\$50,338.35	\$108,573.25	\$100,337.85	\$259,249.45
200 Personnel Services – Employee Benefits				
210 Group Insurance – Contracted Provider	1,488.59	1,067.36	1,794.60	4,350.55
220 Social Security Contributions	3,798.21	7,955.20	7,486.25	19,239.66
230 PSERS Retirement Contributions	27,404.94	45,206.37	17,636.71	90,248.02
250 Unemployment Compensation	(5.65)	(4.05)		(9.70)
260 Workers' Compensation	901.82	646.63		1,548.45
270 Group Insurance – Self-Insurance	17,543.09	12,578.97	13,398.60	43,520.66
Total Personnel Services – Employee Benefits	\$51,131.00	\$67,450.48	\$40,316.16	\$158,897.64
300 Purchased Professional and Technical Services				
322 Professional Educational Services – Ius	138,873.90	99,577.16	10,791.00	249,242.06
329 Professional Educational Services – Other			2,159.80	2,159.80
330 Other Professional Services	5.82	4.18	5,312.73	5,322.73
Total Purchased Professional and Technical Services	\$138,879.72	\$99,581.34	\$18,263.53	\$256,724.59
400 Purchased Property Services				
440 Rentals	821.88	589.32		1,411.20
Total Purchased Property Services	\$821.88	\$589.32		\$1,411.20
500 Other Purchased Services				
561 Tuition To Other School Districts Within the State	28,849.18	20,685.81		49,534.99
562 Tuition To Pennsylvania Charter Schools	596,324.14	427,584.07		1,023,908.21
567 Tuition To Approved Private Schools (APS) and PA Chartered Schools for the Deaf and Blind	29,378.71	21,065.51		50,444.22
594 IU Payment By Withholding for Institutionalized Children's Programs – Special Classes	1,408.52	1,009.96		2,418.48
Total Other Purchased Services	\$655,960.55	\$470,345.35		\$1,126,305.90
600 Supplies				
610 General Supplies	565.93	405.79		971.72
Total Supplies	\$565.93	\$405.79		\$971.72
Total 1290 Special Programs - Other Support	\$897,697.43	\$746,945.53	\$158,917.54	\$1,803,560.50

General Fund (10)

1300 Vocational Education

<u>Elementary</u>	<u>Secondary</u>	<u>Federal</u>	<u>Total</u>
-------------------	------------------	----------------	--------------

400 Purchased Property Services

440 Rentals

98,005.41

98,005.41

Total Purchased Property Services

\$98,005.41

\$98,005.41

500 Other Purchased Services

564 Tuition To Career and Technology Centers

1,231,130.00

1,231,130.00

Total Other Purchased Services

\$1,231,130.00

\$1,231,130.00

Total 1300 Vocational Education

\$1,329,135.41

\$1,329,135.41

LEA : 113384603 Lebanon SD

Printed 11/6/2023 9:58:57 AM

General Fund (10)

1400 Other Instructional Programs – Elementary / Secondary

100 Personnel Services – Salaries

100 Personnel Services – Salaries

Total Personnel Services – Salaries

200 Personnel Services – Employee Benefits

210 Group Insurance – Contracted Provider

220 Social Security Contributions

230 PSERS Retirement Contributions

250 Unemployment Compensation

260 Workers' Compensation

270 Group Insurance – Self-Insurance

Total Personnel Services – Employee Benefits

300 Purchased Professional and Technical Services

330 Other Professional Services

Total Purchased Professional and Technical Services

500 Other Purchased Services

510 Student Transportation Services

561 Tuition To Other School Districts Within the State

Total Other Purchased Services

600 Supplies

610 General Supplies

Total Supplies

Total 1400 Other Instructional Programs – Elementary / Secondary

	<u>Elementary</u>	<u>Secondary</u>	<u>Federal</u>	<u>Total</u>
100 Personnel Services – Salaries	641.08	4,307.67	600,521.57	605,470.32
Total Personnel Services – Salaries	\$641.08	\$4,307.67	\$600,521.57	\$605,470.32
200 Personnel Services – Employee Benefits				
210 Group Insurance – Contracted Provider	3,454.44	2,514.86	505.08	6,474.38
220 Social Security Contributions	48.37	328.46	45,091.28	45,468.11
230 PSERS Retirement Contributions	60,866.22	44,693.31	104,170.56	209,730.09
250 Unemployment Compensation	(13.10)	(9.54)		(22.64)
260 Workers' Compensation	2,092.79	1,523.57		3,616.36
270 Group Insurance – Self-Insurance	40,711.02	29,638.24		70,349.26
Total Personnel Services – Employee Benefits	\$107,159.74	\$78,688.90	\$149,766.92	\$335,615.56
300 Purchased Professional and Technical Services				
330 Other Professional Services	13,933.05	9,990.45	20,228.20	44,151.70
Total Purchased Professional and Technical Services	\$13,933.05	\$9,990.45	\$20,228.20	\$44,151.70
500 Other Purchased Services				
510 Student Transportation Services			83,690.27	83,690.27
561 Tuition To Other School Districts Within the State	73,772.28	52,897.15		126,669.43
Total Other Purchased Services	\$73,772.28	\$52,897.15	\$83,690.27	\$210,359.70
600 Supplies				
610 General Supplies			7,348.29	7,348.29
Total Supplies			\$7,348.29	\$7,348.29
Total 1400 Other Instructional Programs – Elementary / Secondary	\$195,506.15	\$145,884.17	\$861,555.25	\$1,202,945.57

General Fund (10)

1410 Drivers' Education

100 Personnel Services – Salaries

100 Personnel Services – Salaries

Total Personnel Services – Salaries

200 Personnel Services – Employee Benefits

210 Group Insurance – Contracted Provider

220 Social Security Contributions

230 PSERS Retirement Contributions

250 Unemployment Compensation

260 Workers' Compensation

270 Group Insurance – Self-Insurance

Total Personnel Services – Employee Benefits

Total 1410 Drivers' Education

	<u>Elementary</u>	<u>Secondary</u>	<u>Federal</u>	<u>Total</u>
		3,848.00		3,848.00
		\$3,848.00		\$3,848.00
		37.93		37.93
		293.79		293.79
		1,050.21		1,050.21
		(0.14)		(0.14)
		22.98		22.98
		447.09		447.09
		\$1,851.86		\$1,851.86
		\$5,699.86		\$5,699.86

LEA : 113384603 Lebanon SD

Printed 11/6/2023 9:58:57 AM

General Fund (10)

1420 Summer School

	<u>Elementary</u>	<u>Secondary</u>	<u>Federal</u>	<u>Total</u>
100 Personnel Services – Salaries				
100 Personnel Services – Salaries			199,755.89	199,755.89
Total Personnel Services – Salaries			\$199,755.89	\$199,755.89
200 Personnel Services – Employee Benefits				
210 Group Insurance – Contracted Provider	1,146.98	822.42		1,969.40
220 Social Security Contributions			15,040.92	15,040.92
230 PSERS Retirement Contributions	19,505.30	13,985.95	33,491.19	66,982.44
250 Unemployment Compensation	(4.35)	(3.12)		(7.47)
260 Workers' Compensation	694.87	498.24		1,193.11
270 Group Insurance – Self-Insurance	13,517.23	9,692.30		23,209.53
Total Personnel Services – Employee Benefits	\$34,860.03	\$24,995.79	\$48,532.11	\$108,387.93
500 Other Purchased Services				
510 Student Transportation Services			69,729.95	69,729.95
Total Other Purchased Services			\$69,729.95	\$69,729.95
Total 1420 Summer School	\$34,860.03	\$24,995.79	\$318,017.95	\$377,873.77

General Fund (10)

1430 Homebound Instruction

100 Personnel Services – Salaries

100 Personnel Services – Salaries

Total Personnel Services – Salaries

200 Personnel Services – Employee Benefits

210 Group Insurance – Contracted Provider

220 Social Security Contributions

230 PSERS Retirement Contributions

250 Unemployment Compensation

260 Workers' Compensation

270 Group Insurance – Self-Insurance

Total Personnel Services – Employee Benefits

300 Purchased Professional and Technical Services

330 Other Professional Services

Total Purchased Professional and Technical Services

Total 1430 Homebound Instruction

	<u>Elementary</u>	<u>Secondary</u>	<u>Federal</u>	<u>Total</u>
100 Personnel Services – Salaries	641.08	459.67		1,100.75
Total Personnel Services – Salaries	\$641.08	\$459.67		\$1,100.75
200 Personnel Services – Employee Benefits				
210 Group Insurance – Contracted Provider	6.31	4.52		10.83
220 Social Security Contributions	48.36	34.67		83.03
230 PSERS Retirement Contributions	226.05	162.08		388.13
250 Unemployment Compensation	(0.02)	(0.02)		(0.04)
260 Workers' Compensation	3.83	2.74		6.57
270 Group Insurance – Self-Insurance	74.48	53.41		127.89
Total Personnel Services – Employee Benefits	\$359.01	\$257.40		\$616.41
300 Purchased Professional and Technical Services				
330 Other Professional Services	13,933.05	9,990.45		23,923.50
Total Purchased Professional and Technical Services	\$13,933.05	\$9,990.45		\$23,923.50
Total 1430 Homebound Instruction	\$14,933.14	\$10,707.52		\$25,640.66

LEA : 113384603 Lebanon SD

Printed 11/6/2023 9:58:57 AM

General Fund (10)

1440 Alternative Regular Education Programs

100 Personnel Services – Salaries

100 Personnel Services – Salaries

Total Personnel Services – Salaries

200 Personnel Services – Employee Benefits

210 Group Insurance – Contracted Provider

220 Social Security Contributions

230 PSERS Retirement Contributions

250 Unemployment Compensation

260 Workers' Compensation

270 Group Insurance – Self-Insurance

Total Personnel Services – Employee Benefits

500 Other Purchased Services

561 Tuition To Other School Districts Within the State

Total Other Purchased Services

Total 1440 Alternative Regular Education Programs

	<u>Elementary</u>	<u>Secondary</u>	<u>Federal</u>	<u>Total</u>
			85,832.60	85,832.60
Total Personnel Services – Salaries			\$85,832.60	\$85,832.60
200 Personnel Services – Employee Benefits				
210 Group Insurance – Contracted Provider	492.83	353.38	505.08	1,351.29
220 Social Security Contributions			6,558.88	6,558.88
230 PSERS Retirement Contributions	8,813.03	6,319.24	15,132.28	30,264.55
250 Unemployment Compensation	(1.87)	(1.34)		(3.21)
260 Workers' Compensation	298.57	214.09		512.66
270 Group Insurance – Self-Insurance	5,808.18	4,164.66		9,972.84
Total Personnel Services – Employee Benefits	\$15,410.74	\$11,050.03	\$22,196.24	\$48,657.01
500 Other Purchased Services				
561 Tuition To Other School Districts Within the State	73,772.28	52,897.15		126,669.43
Total Other Purchased Services	\$73,772.28	\$52,897.15		\$126,669.43
Total 1440 Alternative Regular Education Programs	\$89,183.02	\$63,947.18	\$108,028.84	\$261,159.04

General Fund (10)

1441 Adjudicated / Court-Placed Programs

500 Other Purchased Services

561 Tuition To Other School Districts Within the State

Total Other Purchased Services

Total 1441 Adjudicated / Court-Placed Programs

	<u>Elementary</u>	<u>Secondary</u>	<u>Federal</u>	<u>Total</u>
	73,772.28	52,897.15		126,669.43
Total Other Purchased Services	\$73,772.28	\$52,897.15		\$126,669.43
Total 1441 Adjudicated / Court-Placed Programs	\$73,772.28	\$52,897.15		\$126,669.43

LEA : 113384603 Lebanon SD

Printed 11/6/2023 9:58:57 AM

General Fund (10)

	<u>Elementary</u>	<u>Secondary</u>	<u>Federal</u>	<u>Total</u>
1442 Alternative Education Programs				
100 Personnel Services – Salaries				
100 Personnel Services – Salaries			85,832.60	85,832.60
Total Personnel Services – Salaries			\$85,832.60	\$85,832.60
200 Personnel Services – Employee Benefits				
210 Group Insurance – Contracted Provider	492.83	353.38	505.08	1,351.29
220 Social Security Contributions			6,558.88	6,558.88
230 PSERS Retirement Contributions	8,813.03	6,319.24	15,132.28	30,264.55
250 Unemployment Compensation	(1.87)	(1.34)		(3.21)
260 Workers' Compensation	298.57	214.09		512.66
270 Group Insurance – Self-Insurance	5,808.18	4,164.66		9,972.84
Total Personnel Services – Employee Benefits	\$15,410.74	\$11,050.03	\$22,196.24	\$48,657.01
Total 1442 Alternative Education Programs	\$15,410.74	\$11,050.03	\$108,028.84	\$134,489.61

General Fund (10)

1450 Instructional Programs Outside the Established School Day

	<u>Elementary</u>	<u>Secondary</u>	<u>Federal</u>	<u>Total</u>
100 Personnel Services – Salaries				
100 Personnel Services – Salaries			314,933.08	314,933.08
Total Personnel Services – Salaries			\$314,933.08	\$314,933.08
200 Personnel Services – Employee Benefits				
210 Group Insurance – Contracted Provider	1,808.32	1,296.61		3,104.93
220 Social Security Contributions	0.01		23,491.48	23,491.49
230 PSERS Retirement Contributions	32,321.84	23,175.83	55,547.09	111,044.76
250 Unemployment Compensation	(6.86)	(4.92)		(11.78)
260 Workers' Compensation	1,095.52	785.52		1,881.04
270 Group Insurance – Self-Insurance	21,311.13	15,280.78		36,591.91
Total Personnel Services – Employee Benefits	\$56,529.96	\$40,533.82	\$79,038.57	\$176,102.35
300 Purchased Professional and Technical Services				
330 Other Professional Services			20,228.20	20,228.20
Total Purchased Professional and Technical Services			\$20,228.20	\$20,228.20
500 Other Purchased Services				
510 Student Transportation Services			13,960.32	13,960.32
Total Other Purchased Services			\$13,960.32	\$13,960.32
600 Supplies				
610 General Supplies			7,348.29	7,348.29
Total Supplies			\$7,348.29	\$7,348.29
Total 1450 Instructional Programs Outside the Established School Day	\$56,529.96	\$40,533.82	\$435,508.46	\$532,572.24

LEA : 113384603 Lebanon SD

Printed 11/6/2023 9:58:57 AM

General Fund (10)

1500 Nonpublic School Programs

300 Purchased Professional and Technical Services

322 Professional Educational Services – Ius

Total Purchased Professional and Technical Services

600 Supplies

610 General Supplies

Total Supplies

Total 1500 Nonpublic School Programs

Elementary

Secondary

Federal

Total

2,137.60 2,137.60
\$2,137.60 \$2,137.60

7,741.41 7,741.41
\$7,741.41 \$7,741.41

\$9,879.01 \$9,879.01

General Fund (10)

1800 Pre-Kindergarten

	<u>Elementary</u>	<u>Secondary</u>	<u>Federal</u>	<u>Total</u>
100 Personnel Services – Salaries				
100 Personnel Services – Salaries				1,423,607.41
Total Personnel Services – Salaries				\$1,423,607.41
200 Personnel Services – Employee Benefits				
210 Group Insurance – Contracted Provider				29,090.21
220 Social Security Contributions				103,408.68
230 PSERS Retirement Contributions				492,380.81
250 Unemployment Compensation				(53.27)
260 Workers' Compensation				8,502.99
270 Group Insurance – Self-Insurance				339,933.79
Total Personnel Services – Employee Benefits				\$973,263.21
300 Purchased Professional and Technical Services				
322 Professional Educational Services – Ius				3,184.00
Total Purchased Professional and Technical Services				\$3,184.00
400 Purchased Property Services				
440 Rentals				71,060.00
Total Purchased Property Services				\$71,060.00
500 Other Purchased Services				
510 Student Transportation Services				33,085.20
580 Travel				1,244.16
Total Other Purchased Services				\$34,329.36
600 Supplies				
610 General Supplies				61,123.30
630 Food				710.00
Total Supplies				\$61,833.30
800 Other Objects				
810 Dues and Fees				30.00
Total Other Objects				\$30.00
Total 1800 Pre-Kindergarten				\$2,567,307.28

General Fund (10)

1801 Pre-K Instruction

	<u>Elementary</u>	<u>Secondary</u>	<u>Federal</u>	<u>Total</u>
100 Personnel Services – Salaries				
100 Personnel Services – Salaries				1,423,607.41
Total Personnel Services – Salaries				\$1,423,607.41
200 Personnel Services – Employee Benefits				
210 Group Insurance – Contracted Provider				29,090.21
220 Social Security Contributions				103,408.68
230 PSERS Retirement Contributions				492,380.81
250 Unemployment Compensation				(53.27)
260 Workers' Compensation				8,502.99
270 Group Insurance – Self-Insurance				339,933.79
Total Personnel Services – Employee Benefits				\$973,263.21
300 Purchased Professional and Technical Services				
322 Professional Educational Services – Ius				3,184.00
Total Purchased Professional and Technical Services				\$3,184.00
400 Purchased Property Services				
440 Rentals				71,060.00
Total Purchased Property Services				\$71,060.00
500 Other Purchased Services				
510 Student Transportation Services				33,085.20
580 Travel				1,244.16
Total Other Purchased Services				\$34,329.36
600 Supplies				
610 General Supplies				61,123.30
630 Food				710.00
Total Supplies				\$61,833.30
800 Other Objects				
810 Dues and Fees				30.00
Total Other Objects				\$30.00
Total 1801 Pre-K Instruction				\$2,567,307.28

General Fund (10)

2000 Support Services

Total

100 Personnel Services – Salaries

100 Personnel Services – Salaries

10,502,787.54

Total Personnel Services – Salaries

\$10,502,787.54

200 Personnel Services – Employee Benefits

210 Group Insurance – Contracted Provider

109,228.05

220 Social Security Contributions

775,792.95

230 PSERS Retirement Contributions

3,602,154.49

240 Tuition Reimbursement

315,811.96

250 Unemployment Compensation

(392.72)

260 Workers' Compensation

62,700.23

270 Group Insurance – Self-Insurance

1,281,301.95

291 Other Retirement Plans

42,650.00

Total Personnel Services – Employee Benefits

\$6,189,246.91

300 Purchased Professional and Technical Services

310 Official / Administrative Services

166,277.40

322 Professional Educational Services – Ius

209,408.66

329 Professional Educational Services – Other

19,049.50

330 Other Professional Services

688,407.80

Total Purchased Professional and Technical Services

\$1,083,143.36

400 Purchased Property Services

410 Cleaning Services

63,680.02

420 Utility Services

904,517.96

430 Repairs and Maintenance Services

378,313.03

440 Rentals

115,770.20

460 Extermination Services

11,369.24

Total Purchased Property Services

\$1,473,650.45

500 Other Purchased Services

510 Student Transportation Services

2,625.62

513 Contracted Carriers

1,781,079.21

516 Student Transportation Services From the IU

178.90

520 Insurance – General

68,988.00

522 Automotive Liability Insurance

22,970.00

523 General Property and Liability Insurance

183,884.00

530 Communications

110,846.15

549 Other Advertising/Public Relations

10,122.33

550 Printing and Binding

37,366.80

580 Travel

38,882.21

595 IU Payments By Withholding

10,429.01

Total Other Purchased Services

\$2,267,372.23

600 Supplies

610 General Supplies

983,595.97

620 Energy

29,642.40

630 Food

16,028.23

640 Books and Periodicals

253,000.56

LEA : 113384603 Lebanon SD

Printed 11/6/2023 9:59:05 AM

General Fund (10)

2000 Support Services

Total Supplies

Total
\$1,282,267.16

700 Property

738 Technology Software Lease and Other Right-to-Use Arrangements

65,648.00

752 Capital Equipment – Original and Additional

140,482.00

Total Property

\$206,130.00

800 Other Objects

810 Dues and Fees

62,823.61

890 Miscellaneous Expenditures

3,455.00

Total Other Objects

\$66,278.61

Total 2000 Support Services

\$23,070,876.26

General Fund (10)

2100 Support Services – Students

100 Personnel Services – Salaries

100 Personnel Services – Salaries

	<u>Elementary</u>	<u>Secondary</u>	<u>Federal</u>	<u>Total</u>
100 Personnel Services – Salaries	663,462.35	734,728.60	423,644.32	2,018,495.99
Total Personnel Services – Salaries	\$663,462.35	\$734,728.60	\$423,644.32	\$2,018,495.99

200 Personnel Services – Employee Benefits

210 Group Insurance – Contracted Provider

220 Social Security Contributions

230 PSERS Retirement Contributions

250 Unemployment Compensation

260 Workers' Compensation

270 Group Insurance – Self-Insurance

291 Other Retirement Plans

210 Group Insurance – Contracted Provider	8,325.87	5,969.93	4,479.94	24,377.63
220 Social Security Contributions	49,065.58	54,069.14	31,934.61	148,856.10
230 PSERS Retirement Contributions	238,877.06	261,890.58	71,942.24	702,419.23
250 Unemployment Compensation	(31.59)	(22.65)		(75.49)
260 Workers' Compensation	5,044.00	3,616.73		12,054.50
270 Group Insurance – Self-Insurance	98,120.95	70,355.95	44,094.72	278,590.73
291 Other Retirement Plans	5,066.88	3,633.12		8,700.00
Total Personnel Services – Employee Benefits	\$404,468.75	\$399,512.80	\$152,451.51	\$1,174,922.70

300 Purchased Professional and Technical Services

329 Professional Educational Services – Other

330 Other Professional Services

329 Professional Educational Services – Other		(500.00)		(500.00)
330 Other Professional Services			3,198.00	30,537.32
Total Purchased Professional and Technical Services		(\$500.00)	\$3,198.00	\$30,037.32

400 Purchased Property Services

440 Rentals

440 Rentals		676.97		676.97
Total Purchased Property Services		\$676.97		\$676.97

500 Other Purchased Services

510 Student Transportation Services

530 Communications

550 Printing and Binding

580 Travel

510 Student Transportation Services		2,521.10	104.52	2,625.62
530 Communications				20.80
550 Printing and Binding				134.25
580 Travel	543.06	746.46	208.68	3,990.45
Total Other Purchased Services	\$543.06	\$3,267.56	\$313.20	\$6,771.12

600 Supplies

610 General Supplies

630 Food

640 Books and Periodicals

610 General Supplies	13,796.35	29,227.13	923.96	46,777.40
630 Food		291.00	1,404.90	1,695.90
640 Books and Periodicals	176.84			176.84
Total Supplies	\$13,973.19	\$29,518.13	\$2,328.86	\$48,650.14

800 Other Objects

810 Dues and Fees

810 Dues and Fees	996.40	884.59	465.00	2,575.99
Total Other Objects	\$996.40	\$884.59	\$465.00	\$2,575.99

Total 2100 Support Services – Students

Total 2100 Support Services – Students	\$1,083,443.75	\$1,168,088.65	\$582,400.89	\$3,282,130.23
---	-----------------------	-----------------------	---------------------	-----------------------

LEA : 113384603 Lebanon SD

Printed 11/6/2023 9:59:05 AM

General Fund (10)

	<u>Elementary</u>	<u>Secondary</u>	<u>Federal</u>	<u>Total</u>
2110 Supervision of Student Services				
100 Personnel Services – Salaries				
100 Personnel Services – Salaries			51,827.45	51,827.45
Total Personnel Services – Salaries			\$51,827.45	\$51,827.45
200 Personnel Services – Employee Benefits				
210 Group Insurance – Contracted Provider	297.57	213.37	562.80	1,073.74
220 Social Security Contributions	302.96	217.23	3,404.02	3,924.21
230 PSERS Retirement Contributions	6,160.69	4,417.41	7,757.30	18,335.40
250 Unemployment Compensation	(1.12)	(0.81)		(1.93)
260 Workers' Compensation	180.28	129.27		309.55
270 Group Insurance – Self-Insurance	3,507.10	2,514.70	5,848.08	11,869.88
Total Personnel Services – Employee Benefits	\$10,447.48	\$7,491.17	\$17,572.20	\$35,510.85
600 Supplies				
610 General Supplies	8,079.82	5,793.50		13,873.32
Total Supplies	\$8,079.82	\$5,793.50		\$13,873.32
Total 2110 Supervision of Student Services	\$18,527.30	\$13,284.67	\$69,399.65	\$101,211.62

General Fund (10)

2111 Supervision of Student Services – Head of Component

600 Supplies

610 General Supplies

Total Supplies

Total 2111 Supervision of Student Services – Head of Component

<u>Elementary</u>	<u>Secondary</u>	<u>Federal</u>	<u>Total</u>
8,079.82	5,793.50		13,873.32
\$8,079.82	\$5,793.50		\$13,873.32
\$8,079.82	\$5,793.50		\$13,873.32

LEA : 113384603 Lebanon SD

Printed 11/6/2023 9:59:05 AM

General Fund (10)

2119 Supervision of Student Services -- All Other Supervision

	<u>Elementary</u>	<u>Secondary</u>	<u>Federal</u>	<u>Total</u>
100 Personnel Services -- Salaries				
100 Personnel Services -- Salaries			51,827.45	51,827.45
Total Personnel Services -- Salaries			\$51,827.45	\$51,827.45
200 Personnel Services -- Employee Benefits				
210 Group Insurance -- Contracted Provider	297.57	213.37	562.80	1,073.74
220 Social Security Contributions	302.96	217.23	3,404.02	3,924.21
230 PSERS Retirement Contributions	6,160.69	4,417.41	7,757.30	18,335.40
250 Unemployment Compensation	(1.12)	(0.81)		(1.93)
260 Workers' Compensation	180.28	129.27		309.55
270 Group Insurance -- Self-Insurance	3,507.10	2,514.70	5,848.08	11,869.88
Total Personnel Services -- Employee Benefits	\$10,447.48	\$7,491.17	\$17,572.20	\$35,510.85
Total 2119 Supervision of Student Services -- All Other Supervision	\$10,447.48	\$7,491.17	\$69,399.65	\$87,338.30

General Fund (10)

	<u>Elementary</u>	<u>Secondary</u>	<u>Federal</u>	<u>Total</u>
2120 Guidance Services				
100 Personnel Services – Salaries				
100 Personnel Services – Salaries	452,354.41	583,357.24		1,035,711.65
Total Personnel Services – Salaries	\$452,354.41	\$583,357.24		\$1,035,711.65
200 Personnel Services – Employee Benefits				
210 Group Insurance – Contracted Provider	5,946.97	4,264.19		10,211.16
220 Social Security Contributions	33,238.78	42,720.81		75,959.59
230 PSERS Retirement Contributions	158,418.41	204,199.08		362,617.49
250 Unemployment Compensation	(22.57)	(16.18)		(38.75)
260 Workers' Compensation	3,602.81	2,583.34		6,186.15
270 Group Insurance – Self-Insurance	70,085.33	50,253.49		120,338.82
291 Other Retirement Plans	5,066.88	3,633.12		8,700.00
Total Personnel Services – Employee Benefits	\$276,336.61	\$307,637.85		\$583,974.46
300 Purchased Professional and Technical Services				
329 Professional Educational Services – Other		(500.00)		(500.00)
Total Purchased Professional and Technical Services		(\$500.00)		(\$500.00)
400 Purchased Property Services				
440 Rentals		676.97		676.97
Total Purchased Property Services		\$676.97		\$676.97
500 Other Purchased Services				
510 Student Transportation Services		2,521.10		2,521.10
580 Travel	256.80	541.20		798.00
Total Other Purchased Services	\$256.80	\$3,062.30		\$3,319.10
600 Supplies				
610 General Supplies	1,116.84	20,149.67		21,266.51
630 Food		291.00		291.00
640 Books and Periodicals	176.84			176.84
Total Supplies	\$1,293.68	\$20,440.67		\$21,734.35
800 Other Objects				
810 Dues and Fees	460.60	500.40		961.00
Total Other Objects	\$460.60	\$500.40		\$961.00
Total 2120 Guidance Services	\$730,702.10	\$915,175.43		\$1,645,877.53

LEA : 113384603 Lebanon SD

Printed 11/6/2023 9:59:05 AM

General Fund (10)

2130 Attendance Services

100 Personnel Services – Salaries

100 Personnel Services – Salaries

Total Personnel Services – Salaries

200 Personnel Services – Employee Benefits

210 Group Insurance – Contracted Provider

220 Social Security Contributions

230 PSERS Retirement Contributions

250 Unemployment Compensation

260 Workers' Compensation

270 Group Insurance – Self-Insurance

Total Personnel Services – Employee Benefits

Total 2130 Attendance Services

Elementary

Secondary

Federal

Total

114,660.08

207,646.18

\$114,660.08

\$207,646.18

839.77

2,884.23

8,594.44

15,160.90

18,374.18

70,480.48

(7.76)

1,238.59

8,426.04

32,520.34

\$36,234.43

\$122,276.78

\$150,894.51

\$329,922.96

General Fund (10)

2140 Psychological Services

100 Personnel Services – Salaries

100 Personnel Services – Salaries

Total Personnel Services – Salaries

200 Personnel Services – Employee Benefits

210 Group Insurance – Contracted Provider

220 Social Security Contributions

230 PSERS Retirement Contributions

250 Unemployment Compensation

260 Workers' Compensation

270 Group Insurance – Self-Insurance

Total Personnel Services – Employee Benefits

500 Other Purchased Services

580 Travel

Total Other Purchased Services

600 Supplies

610 General Supplies

Total Supplies

800 Other Objects

810 Dues and Fees

Total Other Objects

Total 2140 Psychological Services

	<u>Elementary</u>	<u>Secondary</u>	<u>Federal</u>	<u>Total</u>
100 Personnel Services – Salaries	211,107.94	151,371.36		362,479.30
Total Personnel Services – Salaries	\$211,107.94	\$151,371.36		\$362,479.30
200 Personnel Services – Employee Benefits				
210 Group Insurance – Contracted Provider	2,081.33	1,492.37		3,573.70
220 Social Security Contributions	15,523.84	11,131.10		26,654.94
230 PSERS Retirement Contributions	74,297.96	53,274.09		127,572.05
250 Unemployment Compensation	(7.90)	(5.66)		(13.56)
260 Workers' Compensation	1,260.91	904.12		2,165.03
270 Group Insurance – Self-Insurance	24,528.52	17,587.76		42,116.28
Total Personnel Services – Employee Benefits	\$117,684.66	\$84,383.78		\$202,068.44
500 Other Purchased Services				
580 Travel	286.26	205.26		491.52
Total Other Purchased Services	\$286.26	\$205.26		\$491.52
600 Supplies				
610 General Supplies	4,599.69	3,283.96		7,883.65
Total Supplies	\$4,599.69	\$3,283.96		\$7,883.65
800 Other Objects				
810 Dues and Fees	535.80	384.19		919.99
Total Other Objects	\$535.80	\$384.19		\$919.99
Total 2140 Psychological Services	\$334,214.35	\$239,628.55		\$573,842.90

LEA : 113384603 Lebanon SD

Printed 11/6/2023 9:59:05 AM

General Fund (10)

	<u>Elementary</u>	<u>Secondary</u>	<u>Federal</u>	<u>Total</u>
2160 Social Work Services				
100 Personnel Services – Salaries				
100 Personnel Services – Salaries			257,156.79	268,140.69
Total Personnel Services – Salaries			\$257,156.79	\$268,140.69
200 Personnel Services – Employee Benefits				
210 Group Insurance – Contracted Provider			3,077.37	5,720.97
220 Social Security Contributions			19,936.15	20,069.09
230 PSERS Retirement Contributions			45,810.76	91,789.05
250 Unemployment Compensation				(10.03)
260 Workers' Compensation				1,601.56
270 Group Insurance – Self-Insurance			29,820.60	60,975.73
Total Personnel Services – Employee Benefits			\$98,644.88	\$180,146.37
300 Purchased Professional and Technical Services				
330 Other Professional Services			3,198.00	13,130.70
Total Purchased Professional and Technical Services			\$3,198.00	\$13,130.70
500 Other Purchased Services				
510 Student Transportation Services			104.52	104.52
580 Travel			208.68	208.68
Total Other Purchased Services			\$313.20	\$313.20
600 Supplies				
610 General Supplies			923.96	923.96
630 Food			1,404.90	1,404.90
Total Supplies			\$2,328.86	\$2,328.86
800 Other Objects				
810 Dues and Fees			465.00	465.00
Total Other Objects			\$465.00	\$465.00
Total 2160 Social Work Services			\$362,106.73	\$464,524.82

General Fund (10)

	<u>Elementary</u>	<u>Secondary</u>	<u>Federal</u>	<u>Total</u>
2170 Student Accounting Services				
100 Personnel Services – Salaries				
100 Personnel Services – Salaries				92,690.72
Total Personnel Services – Salaries				\$92,690.72
200 Personnel Services – Employee Benefits				
210 Group Insurance – Contracted Provider				913.83
220 Social Security Contributions				7,087.37
230 PSERS Retirement Contributions				31,624.76
250 Unemployment Compensation				(3.46)
260 Workers' Compensation				553.62
270 Group Insurance – Self-Insurance				10,769.68
Total Personnel Services – Employee Benefits				\$50,945.80
300 Purchased Professional and Technical Services				
330 Other Professional Services				17,406.62
Total Purchased Professional and Technical Services				\$17,406.62
500 Other Purchased Services				
530 Communications				20.80
550 Printing and Binding				134.25
580 Travel				2,492.25
Total Other Purchased Services				\$2,647.30
600 Supplies				
610 General Supplies				2,829.96
Total Supplies				\$2,829.96
800 Other Objects				
810 Dues and Fees				230.00
Total Other Objects				\$230.00
Total 2170 Student Accounting Services				\$166,750.40

LEA : 113384603 Lebanon SD

Printed 11/6/2023 9:59:05 AM

General Fund (10)

	<u>Elementary</u>	<u>Secondary</u>	<u>Federal</u>	<u>Total</u>
2200 Support Services – Instructional Staff				
100 Personnel Services – Salaries				
100 Personnel Services – Salaries	909,100.75	623,079.81	100,001.36	1,632,181.92
Total Personnel Services – Salaries	\$909,100.75	\$623,079.81	\$100,001.36	\$1,632,181.92
200 Personnel Services – Employee Benefits				
210 Group Insurance – Contracted Provider	10,009.15	6,902.69	432.12	17,343.96
220 Social Security Contributions	66,635.93	46,695.92	7,584.39	120,916.24
230 PSERS Retirement Contributions	323,482.95	228,309.79	16,956.22	568,748.96
240 Tuition Reimbursement	183,928.89	131,883.07		315,811.96
250 Unemployment Compensation	(35.57)	(25.50)		(61.07)
260 Workers' Compensation	5,677.67	4,071.09		9,748.76
270 Group Insurance – Self-Insurance	120,903.31	81,519.79	4,720.80	207,143.90
Total Personnel Services – Employee Benefits	\$710,602.33	\$499,356.85	\$29,693.53	\$1,239,652.71
300 Purchased Professional and Technical Services				
322 Professional Educational Services – Ius	98,251.42	70,449.50	75.00	168,775.92
329 Professional Educational Services – Other	8,735.71	10,763.79		19,499.50
330 Other Professional Services	87,021.22	62,397.10	43,370.61	192,788.93
Total Purchased Professional and Technical Services	\$194,008.35	\$143,610.39	\$43,445.61	\$381,064.35
400 Purchased Property Services				
430 Repairs and Maintenance Services	8,240.29	4,874.09		13,114.38
440 Rentals	2,585.45	1,853.85		4,439.30
Total Purchased Property Services	\$10,825.74	\$6,727.94		\$17,553.68
500 Other Purchased Services				
520 Insurance – General	9,763.35	7,000.65		16,764.00
530 Communications	300.12	208.80		508.92
549 Other Advertising/Public Relations	676.47	485.05		1,161.52
550 Printing and Binding	535.46	383.94		919.40
580 Travel	7,126.26	6,028.33	9,006.35	22,160.94
Total Other Purchased Services	\$18,401.66	\$14,106.77	\$9,006.35	\$41,514.78
600 Supplies				
610 General Supplies	242,489.29	155,974.70	660.00	399,123.99
630 Food	1,740.78	1,740.41		3,481.19
640 Books and Periodicals	172,889.04	79,934.68		252,823.72
Total Supplies	\$417,119.11	\$237,649.79	\$660.00	\$655,428.90
700 Property				
738 Technology Software Lease and Other Right-to-Use Arrangements		65,648.00		65,648.00
752 Capital Equipment – Original and Additional	7,858.32	5,634.68		13,493.00
Total Property	\$7,858.32	\$71,282.68		\$79,141.00
800 Other Objects				
810 Dues and Fees	2,471.61	1,494.37	1,979.30	5,945.28
Total Other Objects	\$2,471.61	\$1,494.37	\$1,979.30	\$5,945.28
Total 2200 Support Services – Instructional Staff	\$2,270,387.87	\$1,597,308.60	\$184,786.15	\$4,052,482.62

General Fund (10)

	<u>Elementary</u>	<u>Secondary</u>	<u>Federal</u>	<u>Total</u>
2220 Technology Support Services				
300 <u>Purchased Professional and Technical Services</u>				
330 Other Professional Services	1,062.88	762.12		1,825.00
Total Purchased Professional and Technical Services	\$1,062.88	\$762.12		\$1,825.00
600 <u>Supplies</u>				
610 General Supplies	1,785.24	1,280.08		3,065.32
Total Supplies	\$1,785.24	\$1,280.08		\$3,065.32
Total 2220 Technology Support Services	\$2,848.12	\$2,042.20		\$4,890.32

LEA : 113384603 Lebanon SD

Printed 11/6/2023 9:59:05 AM

General Fund (10)

	<u>Elementary</u>	<u>Secondary</u>	<u>Federal</u>	<u>Total</u>
2240 Computer-Assisted Instruction Support Services				
100 Personnel Services – Salaries				
100 Personnel Services – Salaries	228,185.14	163,616.26		391,801.40
Total Personnel Services – Salaries	\$228,185.14	\$163,616.26		\$391,801.40
200 Personnel Services – Employee Benefits				
210 Group Insurance – Contracted Provider	2,249.69	1,613.10		3,862.79
220 Social Security Contributions	17,059.14	12,231.96		29,291.10
230 PSERS Retirement Contributions	78,617.81	56,371.57		134,989.38
250 Unemployment Compensation	(8.54)	(6.12)		(14.66)
260 Workers' Compensation	1,362.92	977.25		2,340.17
270 Group Insurance – Self-Insurance	26,512.71	19,010.49		45,523.20
Total Personnel Services – Employee Benefits	\$125,793.73	\$90,198.25		\$215,991.98
300 Purchased Professional and Technical Services				
322 Professional Educational Services – Ius	96,177.10	68,962.15		165,139.25
330 Other Professional Services	39,033.62	27,988.40		67,022.02
Total Purchased Professional and Technical Services	\$135,210.72	\$96,950.55		\$232,161.27
400 Purchased Property Services				
430 Repairs and Maintenance Services	3,706.31	2,657.54		6,363.85
440 Rentals	2,585.45	1,853.85		4,439.30
Total Purchased Property Services	\$6,291.76	\$4,511.39		\$10,803.15
500 Other Purchased Services				
520 Insurance – General	9,763.35	7,000.65		16,764.00
580 Travel	5,306.82	3,805.17		9,111.99
Total Other Purchased Services	\$15,070.17	\$10,805.82		\$25,875.99
600 Supplies				
610 General Supplies	213,161.48	134,326.81		347,488.29
630 Food	199.93	143.36		343.29
640 Books and Periodicals	138,021.55	51,835.01		189,856.56
Total Supplies	\$351,382.96	\$186,305.18		\$537,688.14
700 Property				
738 Technology Software Lease and Other Right-to-Use Arrangements		65,648.00		65,648.00
752 Capital Equipment – Original and Additional	7,858.32	5,634.68		13,493.00
Total Property	\$7,858.32	\$71,282.68		\$79,141.00
800 Other Objects				
810 Dues and Fees	57.08	40.92		98.00
Total Other Objects	\$57.08	\$40.92		\$98.00
Total 2240 Computer-Assisted Instruction Support Services	\$869,849.88	\$623,711.05		\$1,493,560.93

General Fund (10)

	<u>Elementary</u>	<u>Secondary</u>	<u>Federal</u>	<u>Total</u>
2250 School Library Services				
100 Personnel Services – Salaries				
100 Personnel Services – Salaries	243,484.38	111,124.60		354,608.98
Total Personnel Services – Salaries	\$243,484.38	\$111,124.60		\$354,608.98
200 Personnel Services – Employee Benefits				
210 Group Insurance – Contracted Provider	2,036.12	1,459.98		3,496.10
220 Social Security Contributions	18,030.60	8,067.96		26,098.56
230 PSERS Retirement Contributions	84,421.14	39,182.53		123,603.67
250 Unemployment Compensation	(7.73)	(5.54)		(13.27)
260 Workers' Compensation	1,233.53	884.49		2,118.02
270 Group Insurance – Self-Insurance	23,995.95	17,205.89		41,201.84
Total Personnel Services – Employee Benefits	\$129,709.61	\$66,795.31		\$196,504.92
400 Purchased Property Services				
430 Repairs and Maintenance Services	4,533.98	2,216.55		6,750.53
Total Purchased Property Services	\$4,533.98	\$2,216.55		\$6,750.53
500 Other Purchased Services				
530 Communications	8.92			8.92
Total Other Purchased Services	\$8.92			\$8.92
600 Supplies				
610 General Supplies	2,925.60	1,684.11		4,609.71
640 Books and Periodicals	28,525.52	23,552.27		52,077.79
Total Supplies	\$31,451.12	\$25,236.38		\$56,687.50
800 Other Objects				
810 Dues and Fees	1,490.04	599.96		2,090.00
Total Other Objects	\$1,490.04	\$599.96		\$2,090.00
Total 2250 School Library Services	\$410,678.05	\$205,972.80		\$616,650.85

LEA : 113384603 Lebanon SD

Printed 11/6/2023 9:59:05 AM

General Fund (10)

2260 Instruction and Curriculum Development Services

	<u>Elementary</u>	<u>Secondary</u>	<u>Federal</u>	<u>Total</u>
100 Personnel Services – Salaries				
100 Personnel Services – Salaries	409,621.82	261,416.89	22,500.00	693,538.71
Total Personnel Services – Salaries	\$409,621.82	\$261,416.89	\$22,500.00	\$693,538.71
200 Personnel Services – Employee Benefits				
210 Group Insurance – Contracted Provider	4,619.57	2,855.39		7,474.96
220 Social Security Contributions	29,487.22	19,903.71	1,718.72	51,109.65
230 PSERS Retirement Contributions	142,164.81	96,243.16	3,966.75	242,374.72
250 Unemployment Compensation	(15.11)	(10.84)		(25.95)
260 Workers' Compensation	2,412.53	1,729.87		4,142.40
270 Group Insurance – Self-Insurance	57,386.50	33,651.01		91,037.51
Total Personnel Services – Employee Benefits	\$236,055.52	\$154,372.30	\$5,685.47	\$396,113.29
300 Purchased Professional and Technical Services				
322 Professional Educational Services – Ius	1,218.19	873.48		2,091.67
329 Professional Educational Services – Other	2,806.00	2,012.00		4,818.00
330 Other Professional Services	15,198.84	10,898.07		26,096.91
Total Purchased Professional and Technical Services	\$19,223.03	\$13,783.55		\$33,006.58
500 Other Purchased Services				
530 Communications	291.20	208.80		500.00
549 Other Advertising/Public Relations	676.47	485.05		1,161.52
550 Printing and Binding	535.46	383.94		919.40
580 Travel	1,413.25	1,013.35		2,426.60
Total Other Purchased Services	\$2,916.38	\$2,091.14		\$5,007.52
600 Supplies				
610 General Supplies	20,962.79	15,031.00	660.00	36,653.79
630 Food	808.61	848.28		1,656.89
640 Books and Periodicals	5,023.20	3,601.80		8,625.00
Total Supplies	\$26,794.60	\$19,481.08	\$660.00	\$46,935.68
800 Other Objects				
810 Dues and Fees	787.40	564.58		1,351.98
Total Other Objects	\$787.40	\$564.58		\$1,351.98
Total 2260 Instruction and Curriculum Development Services	\$695,398.75	\$451,709.54	\$28,845.47	\$1,175,953.76

General Fund (10)

2270 Instructional Staff Professional Development Services

	<u>Elementary</u>	<u>Secondary</u>	<u>Federal</u>	<u>Total</u>
100 Personnel Services – Salaries				
100 Personnel Services – Salaries	27,809.41	86,922.06	77,501.36	192,232.83
Total Personnel Services – Salaries	\$27,809.41	\$86,922.06	\$77,501.36	\$192,232.83
200 Personnel Services – Employee Benefits				
210 Group Insurance – Contracted Provider	1,103.77	974.22	432.12	2,510.11
220 Social Security Contributions	2,058.97	6,492.29	5,865.67	14,416.93
230 PSERS Retirement Contributions	18,279.19	36,512.53	12,989.47	67,781.19
240 Tuition Reimbursement	183,928.89	131,883.07		315,811.96
250 Unemployment Compensation	(4.19)	(3.00)		(7.19)
260 Workers' Compensation	668.69	479.48		1,148.17
270 Group Insurance – Self-Insurance	13,008.15	11,652.40	4,720.80	29,381.35
Total Personnel Services – Employee Benefits	\$219,043.47	\$187,990.99	\$24,008.06	\$431,042.52
300 Purchased Professional and Technical Services				
322 Professional Educational Services – Ius	856.13	613.87	75.00	1,545.00
329 Professional Educational Services – Other	5,929.71	8,751.79		14,681.50
330 Other Professional Services	31,725.88	22,748.51	43,370.61	97,845.00
Total Purchased Professional and Technical Services	\$38,511.72	\$32,114.17	\$43,445.61	\$114,071.50
500 Other Purchased Services				
580 Travel	406.19	1,209.81	9,006.35	10,622.35
Total Other Purchased Services	\$406.19	\$1,209.81	\$9,006.35	\$10,622.35
600 Supplies				
610 General Supplies	3,654.18	3,652.70		7,306.88
630 Food	732.24	748.77		1,481.01
640 Books and Periodicals	1,318.77	945.60		2,264.37
Total Supplies	\$5,705.19	\$5,347.07		\$11,052.26
800 Other Objects				
810 Dues and Fees	137.09	288.91	1,979.30	2,405.30
Total Other Objects	\$137.09	\$288.91	\$1,979.30	\$2,405.30
Total 2270 Instructional Staff Professional Development Services	\$291,613.07	\$313,873.01	\$155,940.68	\$761,426.76

LEA : 113384603 Lebanon SD

Printed 11/6/2023 9:59:05 AM

General Fund (10)

	<u>Elementary</u>	<u>Secondary</u>	<u>Federal</u>	<u>Total</u>
2300 Support Services – Administration				
100 Personnel Services – Salaries				
100 Personnel Services – Salaries	1,401,960.04	1,050,379.43		2,721,756.16
Total Personnel Services – Salaries	\$1,401,960.04	\$1,050,379.43		\$2,721,756.16
200 Personnel Services – Employee Benefits				
210 Group Insurance – Contracted Provider	14,052.70	10,076.26		26,785.15
220 Social Security Contributions	103,606.23	77,772.42		199,115.72
230 PSERS Retirement Contributions	488,104.01	352,432.71		924,012.04
250 Unemployment Compensation	(53.34)	(38.24)		(101.66)
260 Workers' Compensation	8,513.44	6,104.42		16,227.04
270 Group Insurance – Self-Insurance	165,611.43	118,748.85		315,663.67
291 Other Retirement Plans	3,494.12	3,505.88		27,000.00
Total Personnel Services – Employee Benefits	\$783,328.59	\$568,602.30		\$1,508,701.96
300 Purchased Professional and Technical Services				
310 Official / Administrative Services				166,277.40
322 Professional Educational Services – lus	425.00			425.00
330 Other Professional Services				111,675.00
Total Purchased Professional and Technical Services	\$425.00			\$278,377.40
400 Purchased Property Services				
440 Rentals	2,047.72			1,721.47
Total Purchased Property Services	\$2,047.72			\$1,721.47
500 Other Purchased Services				
520 Insurance – General				52,124.00
549 Other Advertising/Public Relations				3,110.96
550 Printing and Binding	6.03	12.72		34,020.39
580 Travel	768.01	123.14		891.15
Total Other Purchased Services	\$774.04	\$135.86		\$90,146.50
600 Supplies				
610 General Supplies	6,288.72	7,232.47		41,501.29
630 Food	514.27	324.20		6,414.67
Total Supplies	\$6,802.99	\$7,556.67		\$47,915.96
800 Other Objects				
810 Dues and Fees	888.69	1,620.31		32,471.14
Total Other Objects	\$888.69	\$1,620.31		\$32,471.14
Total 2300 Support Services – Administration	\$2,196,227.07	\$1,628,294.57		\$4,681,090.59

General Fund (10)

2310 Board Services

Elementary

Secondary

Federal

Total

300 Purchased Professional and Technical Services

330 Other Professional Services

107,300.00

Total Purchased Professional and Technical Services

\$107,300.00

500 Other Purchased Services

520 Insurance – General

52,124.00

549 Other Advertising/Public Relations

2,822.96

550 Printing and Binding

191.25

Total Other Purchased Services

\$55,138.21

600 Supplies

610 General Supplies

56.00

630 Food

468.00

Total Supplies

\$524.00

800 Other Objects

810 Dues and Fees

28,502.64

Total Other Objects

\$28,502.64

Total 2310 Board Services

\$191,464.85

LEA : 113384603 Lebanon SD

Printed 11/6/2023 9:59:05 AM

General Fund (10)

2330 Tax Assessment and Collection Services

300 Purchased Professional and Technical Services

310 Official / Administrative Services

Total Purchased Professional and Technical Services

Total 2330 Tax Assessment and Collection Services

Elementary

Secondary

Federal

Total

89,074.89

\$89,074.89

\$89,074.89

General Fund (10)

2350 Legal and Accounting Services

Elementary

Secondary

Federal

Total

300 Purchased Professional and Technical Services

310 Official / Administrative Services

77,202.51

Total Purchased Professional and Technical Services

\$77,202.51

Total 2350 Legal and Accounting Services

\$77,202.51

LEA : 113384603 Lebanon SD

Printed 11/6/2023 9:59:05 AM

General Fund (10)

2360 Office of the Superintendent / Executive Director Services

	<u>Elementary</u>	<u>Secondary</u>	<u>Federal</u>	<u>Total</u>
100 Personnel Services – Salaries				
100 Personnel Services – Salaries				269,416.69
Total Personnel Services – Salaries				\$269,416.69
200 Personnel Services – Employee Benefits				
210 Group Insurance – Contracted Provider				2,656.19
220 Social Security Contributions				17,737.07
230 PSERS Retirement Contributions				83,475.32
250 Unemployment Compensation				(10.08)
260 Workers' Compensation				1,609.18
270 Group Insurance – Self-Insurance				31,303.39
291 Other Retirement Plans				20,000.00
Total Personnel Services – Employee Benefits				\$156,771.07
300 Purchased Professional and Technical Services				
330 Other Professional Services				3,875.00
Total Purchased Professional and Technical Services				\$3,875.00
500 Other Purchased Services				
550 Printing and Binding				20,710.00
Total Other Purchased Services				\$20,710.00
600 Supplies				
610 General Supplies				6,725.72
630 Food				2,635.95
Total Supplies				\$9,361.67
800 Other Objects				
810 Dues and Fees				1,459.50
Total Other Objects				\$1,459.50
Total 2360 Office of the Superintendent / Executive Director Services				\$461,593.93

General Fund (10)

2370 Community Relations Services

300 Purchased Professional and Technical Services

330 Other Professional Services

Elementary

Secondary

Federal

Total

500.00

Total Purchased Professional and Technical Services

\$500.00

500 Other Purchased Services

549 Other Advertising/Public Relations

550 Printing and Binding

288.00

13,100.39

Total Other Purchased Services

\$13,388.39

600 Supplies

610 General Supplies

630 Food

1,228.29

780.00

Total Supplies

\$2,008.29

Total 2370 Community Relations Services

\$15,896.68

LEA : 113384603 Lebanon SD

Printed 11/6/2023 9:59:05 AM

General Fund (10)

	<u>Elementary</u>	<u>Secondary</u>	<u>Federal</u>	<u>Total</u>
2380 Office of the Principal Services				
100 Personnel Services – Salaries				
100 Personnel Services – Salaries	1,401,960.04	1,050,379.43		2,452,339.47
Total Personnel Services – Salaries	\$1,401,960.04	\$1,050,379.43		\$2,452,339.47
200 Personnel Services – Employee Benefits				
210 Group Insurance – Contracted Provider	14,052.70	10,076.26		24,128.96
220 Social Security Contributions	103,606.23	77,772.42		181,378.65
230 PSERS Retirement Contributions	488,104.01	352,432.71		840,536.72
250 Unemployment Compensation	(53.34)	(38.24)		(91.58)
260 Workers' Compensation	8,513.44	6,104.42		14,617.86
270 Group Insurance – Self-Insurance	165,611.43	118,748.85		284,360.28
291 Other Retirement Plans	3,494.12	3,505.88		7,000.00
Total Personnel Services – Employee Benefits	\$783,328.59	\$568,602.30		\$1,351,930.89
300 Purchased Professional and Technical Services				
322 Professional Educational Services – Ius	425.00			425.00
Total Purchased Professional and Technical Services	\$425.00			\$425.00
400 Purchased Property Services				
440 Rentals	2,047.72			2,047.72
Total Purchased Property Services	\$2,047.72			\$2,047.72
500 Other Purchased Services				
550 Printing and Binding	6.03	12.72		18.75
580 Travel	768.01	123.14		891.15
Total Other Purchased Services	\$774.04	\$135.86		\$909.90
600 Supplies				
610 General Supplies	6,288.72	7,232.47		13,521.19
630 Food	514.27	324.20		838.47
Total Supplies	\$6,802.99	\$7,556.67		\$14,359.66
800 Other Objects				
810 Dues and Fees	888.69	1,620.31		2,509.00
Total Other Objects	\$888.69	\$1,620.31		\$2,509.00
Total 2380 Office of the Principal Services	\$2,196,227.07	\$1,628,294.57		\$3,824,521.64

General Fund (10)

	<u>Elementary</u>	<u>Secondary</u>	<u>Federal</u>	<u>Total</u>
2390 Other Administration Services				
400 <u>Purchased Property Services</u>				
440 Rentals				(326.25)
Total Purchased Property Services				(\$326.25)
600 <u>Supplies</u>				
610 General Supplies				19,970.09
630 Food				1,692.25
Total Supplies				\$21,662.34
Total 2390 Other Administration Services				\$21,336.09

LEA : 113384603 Lebanon SD

Printed 11/6/2023 9:59:05 AM

General Fund (10)

2400 Support Services – Pupil Health

	<u>Elementary</u>	<u>Secondary</u>	<u>Federal</u>	<u>Total</u>
100 Personnel Services – Salaries				
100 Personnel Services – Salaries				452,329.73
Total Personnel Services – Salaries				\$452,329.73
200 Personnel Services – Employee Benefits				
210 Group Insurance – Contracted Provider				4,459.54
220 Social Security Contributions				33,331.17
230 PSERS Retirement Contributions				155,848.77
250 Unemployment Compensation				(16.92)
260 Workers' Compensation				2,701.69
270 Group Insurance – Self-Insurance				52,555.96
Total Personnel Services – Employee Benefits				\$248,880.21
300 Purchased Professional and Technical Services				
329 Professional Educational Services – Other				50.00
330 Other Professional Services				51,485.13
Total Purchased Professional and Technical Services				\$51,535.13
400 Purchased Property Services				
430 Repairs and Maintenance Services				385.00
Total Purchased Property Services				\$385.00
500 Other Purchased Services				
550 Printing and Binding				10.00
580 Travel				974.91
Total Other Purchased Services				\$984.91
600 Supplies				
610 General Supplies				20,351.67
630 Food				10.00
Total Supplies				\$20,361.67
800 Other Objects				
810 Dues and Fees				580.00
Total Other Objects				\$580.00
Total 2400 Support Services – Pupil Health				\$775,056.65

General Fund (10)

2420 Medical Services

	<u>Elementary</u>	<u>Secondary</u>	<u>Federal</u>	<u>Total</u>
100 Personnel Services – Salaries				
100 Personnel Services – Salaries				452,329.73
Total Personnel Services – Salaries				\$452,329.73
200 Personnel Services – Employee Benefits				
210 Group Insurance – Contracted Provider				4,459.54
220 Social Security Contributions				33,331.17
230 PSERS Retirement Contributions				155,848.77
250 Unemployment Compensation				(16.92)
260 Workers' Compensation				2,701.69
270 Group Insurance – Self-Insurance				52,555.96
Total Personnel Services – Employee Benefits				\$248,880.21
300 Purchased Professional and Technical Services				
329 Professional Educational Services – Other				50.00
330 Other Professional Services				51,485.13
Total Purchased Professional and Technical Services				\$51,535.13
400 Purchased Property Services				
430 Repairs and Maintenance Services				385.00
Total Purchased Property Services				\$385.00
500 Other Purchased Services				
550 Printing and Binding				10.00
580 Travel				974.91
Total Other Purchased Services				\$984.91
600 Supplies				
610 General Supplies				20,351.67
630 Food				10.00
Total Supplies				\$20,361.67
800 Other Objects				
810 Dues and Fees				580.00
Total Other Objects				\$580.00
Total 2420 Medical Services				\$775,056.65

LEA : 113384603 Lebanon SD

Printed 11/6/2023 9:59:05 AM

General Fund (10)

2500 Support Services – Business

	<u>Elementary</u>	<u>Secondary</u>	<u>Federal</u>	<u>Total</u>
100 Personnel Services – Salaries				
100 Personnel Services – Salaries				515,116.79
Total Personnel Services – Salaries				\$515,116.79
200 Personnel Services – Employee Benefits				
210 Group Insurance – Contracted Provider				5,078.55
220 Social Security Contributions				38,137.97
230 PSERS Retirement Contributions				178,434.76
250 Unemployment Compensation				(19.26)
260 Workers' Compensation				3,076.71
270 Group Insurance – Self-Insurance				59,851.15
291 Other Retirement Plans				2,400.00
Total Personnel Services – Employee Benefits				\$286,959.88
300 Purchased Professional and Technical Services				
330 Other Professional Services				33,902.01
Total Purchased Professional and Technical Services				\$33,902.01
400 Purchased Property Services				
440 Rentals				100,753.64
Total Purchased Property Services				\$100,753.64
500 Other Purchased Services				
520 Insurance – General				100.00
530 Communications				40,165.38
550 Printing and Binding				2,101.76
580 Travel				2,763.75
Total Other Purchased Services				\$45,130.89
600 Supplies				
610 General Supplies				89,413.54
630 Food				600.00
Total Supplies				\$90,013.54
800 Other Objects				
810 Dues and Fees				2,847.00
Total Other Objects				\$2,847.00
Total 2500 Support Services – Business				\$1,074,723.75

General Fund (10)

2510 Fiscal Services

	<u>Elementary</u>	<u>Secondary</u>	<u>Federal</u>	<u>Total</u>
100 Personnel Services – Salaries				
100 Personnel Services – Salaries				515,116.79
Total Personnel Services – Salaries				\$515,116.79
200 Personnel Services – Employee Benefits				
210 Group Insurance – Contracted Provider				5,078.55
220 Social Security Contributions				38,137.97
230 PSERS Retirement Contributions				178,434.76
250 Unemployment Compensation				(19.26)
260 Workers' Compensation				3,076.71
270 Group Insurance – Self-Insurance				59,851.15
291 Other Retirement Plans				2,400.00
Total Personnel Services – Employee Benefits				\$286,959.88
300 Purchased Professional and Technical Services				
330 Other Professional Services				33,902.01
Total Purchased Professional and Technical Services				\$33,902.01
400 Purchased Property Services				
440 Rentals				2,040.00
Total Purchased Property Services				\$2,040.00
500 Other Purchased Services				
520 Insurance – General				100.00
530 Communications				40,165.38
550 Printing and Binding				2,101.76
580 Travel				2,763.75
Total Other Purchased Services				\$45,130.89
600 Supplies				
610 General Supplies				25,853.29
630 Food				600.00
Total Supplies				\$26,453.29
800 Other Objects				
810 Dues and Fees				2,847.00
Total Other Objects				\$2,847.00
Total 2510 Fiscal Services				\$912,449.86

LEA : 113384603 Lebanon SD

Printed 11/6/2023 9:59:05 AM

General Fund (10)

2511 Supervision of Fiscal Services - Head of Component

	<u>Elementary</u>	<u>Secondary</u>	<u>Federal</u>	<u>Total</u>
100 Personnel Services – Salaries				
100 Personnel Services – Salaries				191,026.54
Total Personnel Services – Salaries				\$191,026.54
200 Personnel Services – Employee Benefits				
210 Group Insurance – Contracted Provider				1,883.33
220 Social Security Contributions				14,150.91
230 PSERS Retirement Contributions				67,030.76
250 Unemployment Compensation				(7.14)
260 Workers' Compensation				1,140.97
270 Group Insurance – Self-Insurance				22,195.27
291 Other Retirement Plans				1,200.00
Total Personnel Services – Employee Benefits				\$107,594.10
Total 2511 Supervision of Fiscal Services - Head of Component				\$298,620.64

General Fund (10)

2515 Financial Accounting Services

	<u>Elementary</u>	<u>Secondary</u>	<u>Federal</u>	<u>Total</u>
100 Personnel Services – Salaries				
100 Personnel Services – Salaries				324,090.25
Total Personnel Services – Salaries				\$324,090.25
200 Personnel Services – Employee Benefits				
210 Group Insurance – Contracted Provider				3,195.22
220 Social Security Contributions				23,987.06
230 PSERS Retirement Contributions				111,404.00
250 Unemployment Compensation				(12.12)
260 Workers' Compensation				1,935.74
270 Group Insurance – Self-Insurance				37,655.88
291 Other Retirement Plans				1,200.00
Total Personnel Services – Employee Benefits				\$179,365.78
300 Purchased Professional and Technical Services				
330 Other Professional Services				33,902.01
Total Purchased Professional and Technical Services				\$33,902.01
400 Purchased Property Services				
440 Rentals				2,040.00
Total Purchased Property Services				\$2,040.00
500 Other Purchased Services				
520 Insurance – General				100.00
530 Communications				40,165.38
550 Printing and Binding				2,101.76
580 Travel				2,763.75
Total Other Purchased Services				\$45,130.89
600 Supplies				
610 General Supplies				25,853.29
630 Food				600.00
Total Supplies				\$26,453.29
800 Other Objects				
810 Dues and Fees				2,847.00
Total Other Objects				\$2,847.00
Total 2515 Financial Accounting Services				\$613,829.22

LEA : 113384603 Lebanon SD

Printed 11/6/2023 9:59:05 AM

General Fund (10)

	<u>Elementary</u>	<u>Secondary</u>	<u>Federal</u>	<u>Total</u>
2540 Printing, Publishing and Duplicating Services				
400 <u>Purchased Property Services</u>				
440 Rentals				98,713.64
Total Purchased Property Services				\$98,713.64
600 <u>Supplies</u>				
610 General Supplies				63,560.25
Total Supplies				\$63,560.25
Total 2540 Printing, Publishing and Duplicating Services				\$162,273.89

General Fund (10)

	<u>Elementary</u>	<u>Secondary</u>	<u>Federal</u>	<u>Total</u>
2600 Operation and Maintenance of Plant Services				
100 Personnel Services – Salaries				
100 Personnel Services – Salaries				2,578,270.48
Total Personnel Services – Salaries				\$2,578,270.48
200 Personnel Services – Employee Benefits				
210 Group Insurance – Contracted Provider				25,419.32
220 Social Security Contributions				192,543.22
230 PSERS Retirement Contributions				870,549.89
250 Unemployment Compensation				(96.45)
260 Workers' Compensation				15,399.60
270 Group Insurance – Self-Insurance				299,567.94
Total Personnel Services – Employee Benefits				\$1,403,383.52
300 Purchased Professional and Technical Services				
330 Other Professional Services				205,005.33
Total Purchased Professional and Technical Services				\$205,005.33
400 Purchased Property Services				
410 Cleaning Services				63,680.02
420 Utility Services				904,517.96
430 Repairs and Maintenance Services				364,813.65
440 Rentals				8,138.51
460 Extermination Services				11,369.24
Total Purchased Property Services				\$1,352,519.38
500 Other Purchased Services				
522 Automotive Liability Insurance				22,970.00
523 General Property and Liability Insurance				183,884.00
530 Communications				70,151.05
549 Other Advertising/Public Relations				79.60
580 Travel				4,631.04
Total Other Purchased Services				\$281,715.69
600 Supplies				
610 General Supplies	221,322.14	158,695.26		380,017.40
620 Energy				29,642.40
630 Food				1,122.05
Total Supplies	\$221,322.14	\$158,695.26		\$410,781.85
700 Property				
752 Capital Equipment – Original and Additional				126,989.00
Total Property				\$126,989.00
800 Other Objects				
810 Dues and Fees				5,022.00
Total Other Objects				\$5,022.00
Total 2600 Operation and Maintenance of Plant Services	\$221,322.14	\$158,695.26		\$6,363,687.25

LEA : 113384603 Lebanon SD

Printed 11/6/2023 9:59:05 AM

General Fund (10)

2610 Supervision of Operation and Maintenance of Plant Services

	<u>Elementary</u>	<u>Secondary</u>	<u>Federal</u>	<u>Total</u>
100 Personnel Services – Salaries				
100 Personnel Services – Salaries				316,859.92
Total Personnel Services – Salaries				\$316,859.92
200 Personnel Services – Employee Benefits				
210 Group Insurance – Contracted Provider				3,123.92
220 Social Security Contributions				23,605.47
230 PSERS Retirement Contributions				110,076.46
250 Unemployment Compensation				(11.84)
260 Workers' Compensation				1,892.55
270 Group Insurance – Self-Insurance				36,815.79
Total Personnel Services – Employee Benefits				\$175,502.35
300 Purchased Professional and Technical Services				
330 Other Professional Services				12,123.24
Total Purchased Professional and Technical Services				\$12,123.24
400 Purchased Property Services				
440 Rentals				(50.10)
Total Purchased Property Services				(\$50.10)
500 Other Purchased Services				
530 Communications				124.16
549 Other Advertising/Public Relations				79.60
580 Travel				303.24
Total Other Purchased Services				\$507.00
600 Supplies				
610 General Supplies	10,117.49	7,254.57		17,372.06
630 Food				1,023.76
Total Supplies	\$10,117.49	\$7,254.57		\$18,395.82
800 Other Objects				
810 Dues and Fees				3,203.00
Total Other Objects				\$3,203.00
Total 2610 Supervision of Operation and Maintenance of Plant Services	\$10,117.49	\$7,254.57		\$526,541.23

General Fund (10)

2611 Supervision of Operation and Maintenance of Plant Services – Head of Component

100 Personnel Services – Salaries

100 Personnel Services – Salaries

Total Personnel Services – Salaries

200 Personnel Services – Employee Benefits

210 Group Insurance – Contracted Provider

220 Social Security Contributions

230 PSERS Retirement Contributions

250 Unemployment Compensation

260 Workers' Compensation

270 Group Insurance – Self-Insurance

Total Personnel Services – Employee Benefits

Total 2611 Supervision of Operation and Maintenance of Plant Services – Head of Component

Elementary

Secondary

Federal

Total

162,472.11

\$162,472.11

1,601.81

12,043.56

56,908.62

(6.07)

970.42

18,877.55

\$90,395.89

\$252,868.00

General Fund (10)

2619 Supervision of Operation and Maintenance of Plant Services – All Other Supervision

	<u>Elementary</u>	<u>Secondary</u>	<u>Federal</u>	<u>Total</u>
100 Personnel Services – Salaries				
100 Personnel Services – Salaries				154,387.81
Total Personnel Services – Salaries				\$154,387.81
200 Personnel Services – Employee Benefits				
210 Group Insurance – Contracted Provider				1,522.11
220 Social Security Contributions				11,561.91
230 PSERS Retirement Contributions				53,167.84
250 Unemployment Compensation				(5.77)
260 Workers' Compensation				922.13
270 Group Insurance – Self-Insurance				17,938.24
Total Personnel Services – Employee Benefits				\$85,106.46
300 Purchased Professional and Technical Services				
330 Other Professional Services				12,123.24
Total Purchased Professional and Technical Services				\$12,123.24
400 Purchased Property Services				
440 Rentals				(50.10)
Total Purchased Property Services				(\$50.10)
500 Other Purchased Services				
530 Communications				124.16
549 Other Advertising/Public Relations				79.60
580 Travel				303.24
Total Other Purchased Services				\$507.00
600 Supplies				
610 General Supplies	10,117.49	7,254.57		17,372.06
630 Food				1,023.76
Total Supplies	\$10,117.49	\$7,254.57		\$18,395.82
800 Other Objects				
810 Dues and Fees				3,203.00
Total Other Objects				\$3,203.00
Total 2619 Supervision of Operation and Maintenance of Plant Services – All Other Supervision	\$10,117.49	\$7,254.57		\$273,673.23

General Fund (10)

2620 Operation of Buildings Services

	<u>Elementary</u>	<u>Secondary</u>	<u>Federal</u>	<u>Total</u>
100 Personnel Services – Salaries				
100 Personnel Services – Salaries				1,393,845.96
Total Personnel Services – Salaries				\$1,393,845.96
200 Personnel Services – Employee Benefits				
210 Group Insurance – Contracted Provider				13,742.03
220 Social Security Contributions				103,458.30
230 PSERS Retirement Contributions				467,203.17
250 Unemployment Compensation				(52.15)
260 Workers' Compensation				8,325.23
270 Group Insurance – Self-Insurance				161,950.26
Total Personnel Services – Employee Benefits				\$754,626.84
300 Purchased Professional and Technical Services				
330 Other Professional Services				192,882.09
Total Purchased Professional and Technical Services				\$192,882.09
400 Purchased Property Services				
410 Cleaning Services				63,680.02
420 Utility Services				904,517.96
430 Repairs and Maintenance Services				364,813.65
440 Rentals				5,788.61
460 Extermination Services				11,369.24
Total Purchased Property Services				\$1,350,169.48
500 Other Purchased Services				
522 Automotive Liability Insurance				22,970.00
523 General Property and Liability Insurance				183,884.00
530 Communications				70,026.89
580 Travel				75.10
Total Other Purchased Services				\$276,955.99
600 Supplies				
610 General Supplies	208,828.25	149,736.73		358,564.98
620 Energy				29,642.40
Total Supplies	\$208,828.25	\$149,736.73		\$388,207.38
700 Property				
752 Capital Equipment – Original and Additional				121,537.66
Total Property				\$121,537.66
800 Other Objects				
810 Dues and Fees				1,075.00
Total Other Objects				\$1,075.00
Total 2620 Operation of Buildings Services	\$208,828.25	\$149,736.73		\$4,479,300.40

LEA : 113384603 Lebanon SD

Printed 11/6/2023 9:59:05 AM

General Fund (10)

2640 Care and Upkeep of Equipment Services

100 Personnel Services – Salaries

100 Personnel Services – Salaries

Total Personnel Services – Salaries

200 Personnel Services – Employee Benefits

210 Group Insurance – Contracted Provider

220 Social Security Contributions

230 PSERS Retirement Contributions

250 Unemployment Compensation

260 Workers' Compensation

270 Group Insurance – Self-Insurance

Total Personnel Services – Employee Benefits

Total 2640 Care and Upkeep of Equipment Services

Elementary

Secondary

Federal

Total

352,270.05

\$352,270.05

3,473.05

26,075.53

123,065.95

(13.18)

2,104.05

40,930.08

\$195,635.48

\$547,905.53

General Fund (10)

2660 Safety and Security Services

	<u>Elementary</u>	<u>Secondary</u>	<u>Federal</u>	<u>Total</u>
100 Personnel Services – Salaries				
100 Personnel Services – Salaries				515,294.55
Total Personnel Services – Salaries				\$515,294.55
200 Personnel Services – Employee Benefits				
210 Group Insurance – Contracted Provider				5,080.32
220 Social Security Contributions				39,403.92
230 PSERS Retirement Contributions				170,204.31
250 Unemployment Compensation				(19.28)
260 Workers' Compensation				3,077.77
270 Group Insurance – Self-Insurance				59,871.81
Total Personnel Services – Employee Benefits				\$277,618.85
400 Purchased Property Services				
440 Rentals				2,400.00
Total Purchased Property Services				\$2,400.00
500 Other Purchased Services				
580 Travel				4,252.70
Total Other Purchased Services				\$4,252.70
600 Supplies				
610 General Supplies	2,376.40	1,703.96		4,080.36
630 Food				98.29
Total Supplies	\$2,376.40	\$1,703.96		\$4,178.65
700 Property				
752 Capital Equipment – Original and Additional				5,451.34
Total Property				\$5,451.34
800 Other Objects				
810 Dues and Fees				744.00
Total Other Objects				\$744.00
Total 2660 Safety and Security Services	\$2,376.40	\$1,703.96		\$809,940.09

LEA : 113384603 Lebanon SD

Printed 11/6/2023 9:59:05 AM

General Fund (10)

	<u>Elementary</u>	<u>Secondary</u>	<u>Federal</u>	<u>Total</u>
2700 Student Transportation Services				
100 Personnel Services – Salaries				
100 Personnel Services – Salaries				10,450.00
Total Personnel Services – Salaries				\$10,450.00
200 Personnel Services – Employee Benefits				
210 Group Insurance – Contracted Provider				103.00
220 Social Security Contributions				799.45
250 Unemployment Compensation				(0.39)
260 Workers' Compensation				62.41
270 Group Insurance – Self-Insurance				1,214.18
Total Personnel Services – Employee Benefits				\$2,178.65
300 Purchased Professional and Technical Services				
330 Other Professional Services				50,219.12
Total Purchased Professional and Technical Services				\$50,219.12
500 Other Purchased Services				
513 Contracted Carriers				1,781,079.21
516 Student Transportation Services From the IU				178.90
Total Other Purchased Services				\$1,781,258.11
Total 2700 Student Transportation Services				\$1,844,105.88

General Fund (10)

2720 Vehicle Operation Services

100 Personnel Services – Salaries

100 Personnel Services – Salaries

Elementary

Secondary

Federal

Total

10,450.00

Total Personnel Services – Salaries

\$10,450.00

200 Personnel Services – Employee Benefits

210 Group Insurance – Contracted Provider

220 Social Security Contributions

250 Unemployment Compensation

260 Workers' Compensation

270 Group Insurance – Self-Insurance

103.00

799.45

(0.39)

62.41

1,214.18

Total Personnel Services – Employee Benefits

\$2,178.65

500 Other Purchased Services

513 Contracted Carriers

516 Student Transportation Services From the IU

1,688,373.43

178.90

Total Other Purchased Services

\$1,688,552.33

Total 2720 Vehicle Operation Services

\$1,701,180.98

LEA : 113384603 Lebanon SD

Printed 11/6/2023 9:59:05 AM

General Fund (10)

2730 Monitoring Services

300 Purchased Professional and Technical Services

330 Other Professional Services

Total Purchased Professional and Technical Services

Total 2730 Monitoring Services

Elementary

Secondary

Federal

Total

50,219.12

\$50,219.12

\$50,219.12

General Fund (10)

2750 Nonpublic Transportation

500 Other Purchased Services

513 Contracted Carriers

Total Other Purchased Services

Total 2750 Nonpublic Transportation

Elementary

Secondary

Federal

Total

92,705.78

\$92,705.78

\$92,705.78

LEA : 113384603 Lebanon SD

Printed 11/6/2023 9:59:05 AM

General Fund (10)

2800 Support Services – Central

100 Personnel Services – Salaries

100 Personnel Services – Salaries

Total Personnel Services – Salaries

200 Personnel Services – Employee Benefits

210 Group Insurance – Contracted Provider

220 Social Security Contributions

230 PSERS Retirement Contributions

250 Unemployment Compensation

260 Workers' Compensation

270 Group Insurance – Self-Insurance

291 Other Retirement Plans

Total Personnel Services – Employee Benefits

300 Purchased Professional and Technical Services

322 Professional Educational Services – Ius

330 Other Professional Services

Total Purchased Professional and Technical Services

400 Purchased Property Services

440 Rentals

Total Purchased Property Services

500 Other Purchased Services

549 Other Advertising/Public Relations

550 Printing and Binding

580 Travel

Total Other Purchased Services

600 Supplies

610 General Supplies

630 Food

Total Supplies

800 Other Objects

810 Dues and Fees

890 Miscellaneous Expenditures

Total Other Objects

Total 2800 Support Services – Central

	<u>Elementary</u>	<u>Secondary</u>	<u>Federal</u>	<u>Total</u>
				574,186.47
				\$574,186.47
				5,660.90
				42,093.08
				202,140.84
				(21.48)
				3,429.52
				66,714.42
				4,550.00
				\$324,567.28
				40,207.74
				12,794.96
				\$53,002.70
				40.31
				\$40.31
				5,770.25
				181.00
				3,469.97
				\$9,421.22
				6,410.68
				2,704.42
				\$9,115.10
				13,382.20
				3,455.00
				\$16,837.20
				\$987,170.28

General Fund (10)

2820 Information Services

	<u>Elementary</u>	<u>Secondary</u>	<u>Federal</u>	<u>Total</u>
100 Personnel Services – Salaries				
100 Personnel Services – Salaries				298,263.93
Total Personnel Services – Salaries				\$298,263.93
200 Personnel Services – Employee Benefits				
210 Group Insurance – Contracted Provider				2,940.60
220 Social Security Contributions				22,112.77
230 PSERS Retirement Contributions				104,850.39
250 Unemployment Compensation				(11.16)
260 Workers' Compensation				1,781.48
270 Group Insurance – Self-Insurance				34,655.13
291 Other Retirement Plans				3,350.00
Total Personnel Services – Employee Benefits				\$169,679.21
Total 2820 Information Services				\$467,943.14

LEA : 113384603 Lebanon SD

Printed 11/6/2023 9:59:05 AM

General Fund (10)

	<u>Elementary</u>	<u>Secondary</u>	<u>Federal</u>	<u>Total</u>
2821 Supervision of Information Services				
100 Personnel Services – Salaries				
100 Personnel Services – Salaries				298,263.93
Total Personnel Services – Salaries				\$298,263.93
200 Personnel Services – Employee Benefits				
210 Group Insurance – Contracted Provider				2,940.60
220 Social Security Contributions				22,112.77
230 PSERS Retirement Contributions				104,850.39
250 Unemployment Compensation				(11.16)
260 Workers' Compensation				1,781.48
270 Group Insurance – Self-Insurance				34,655.13
291 Other Retirement Plans				3,350.00
Total Personnel Services – Employee Benefits				\$169,679.21
Total 2821 Supervision of Information Services				\$467,943.14

General Fund (10)

2830 Staff Services

	<u>Elementary</u>	<u>Secondary</u>	<u>Federal</u>	<u>Total</u>
100 Personnel Services – Salaries				
100 Personnel Services – Salaries				275,922.54
Total Personnel Services – Salaries				\$275,922.54
200 Personnel Services – Employee Benefits				
210 Group Insurance – Contracted Provider				2,720.30
220 Social Security Contributions				19,980.31
230 PSERS Retirement Contributions				97,290.45
250 Unemployment Compensation				(10.32)
260 Workers' Compensation				1,648.04
270 Group Insurance – Self-Insurance				32,059.29
291 Other Retirement Plans				1,200.00
Total Personnel Services – Employee Benefits				\$154,888.07
300 Purchased Professional and Technical Services				
322 Professional Educational Services – Ius				40,207.74
330 Other Professional Services				12,794.96
Total Purchased Professional and Technical Services				\$53,002.70
400 Purchased Property Services				
440 Rentals				40.31
Total Purchased Property Services				\$40.31
500 Other Purchased Services				
549 Other Advertising/Public Relations				5,770.25
550 Printing and Binding				181.00
580 Travel				3,469.97
Total Other Purchased Services				\$9,421.22
600 Supplies				
610 General Supplies				6,410.68
630 Food				2,704.42
Total Supplies				\$9,115.10
800 Other Objects				
810 Dues and Fees				13,382.20
890 Miscellaneous Expenditures				3,455.00
Total Other Objects				\$16,837.20
Total 2830 Staff Services				\$519,227.14

General Fund (10)

2831 Supervision of Staff Services

100 Personnel Services – Salaries

100 Personnel Services – Salaries

Total Personnel Services – Salaries

200 Personnel Services – Employee Benefits

210 Group Insurance – Contracted Provider

220 Social Security Contributions

230 PSERS Retirement Contributions

250 Unemployment Compensation

260 Workers' Compensation

270 Group Insurance – Self-Insurance

291 Other Retirement Plans

Total Personnel Services – Employee Benefits

Total 2831 Supervision of Staff Services

	<u>Elementary</u>	<u>Secondary</u>	<u>Federal</u>	<u>Total</u>
				190,371.36
				\$190,371.36
				1,876.87
				14,012.65
				67,125.11
				(7.12)
				1,137.06
				22,119.15
				1,200.00
				\$107,463.72
				\$297,835.08

General Fund (10)

2832 Recruitment and Placement Services

Elementary

Secondary

Federal

Total

500 Other Purchased Services

549 Other Advertising/Public Relations

5,770.25

550 Printing and Binding

181.00

580 Travel

1,776.04

Total Other Purchased Services

\$7,727.29

600 Supplies

610 General Supplies

801.12

630 Food

254.46

Total Supplies

\$1,055.58

800 Other Objects

810 Dues and Fees

255.00

Total Other Objects

\$255.00

Total 2832 Recruitment and Placement Services

\$9,037.87

General Fund (10)

2833 Staff Accounting Services

100 Personnel Services – Salaries

100 Personnel Services – Salaries

85,551.18

Total Personnel Services – Salaries

\$85,551.18

200 Personnel Services – Employee Benefits

210 Group Insurance – Contracted Provider

843.43

220 Social Security Contributions

5,967.66

230 PSERS Retirement Contributions

30,165.34

250 Unemployment Compensation

(3.20)

260 Workers' Compensation

510.98

270 Group Insurance – Self-Insurance

9,940.14

Total Personnel Services – Employee Benefits

\$47,424.35

300 Purchased Professional and Technical Services

322 Professional Educational Services – Ius

40,207.74

330 Other Professional Services

12,794.96

Total Purchased Professional and Technical Services

\$53,002.70

400 Purchased Property Services

440 Rentals

40.31

Total Purchased Property Services

\$40.31

500 Other Purchased Services

580 Travel

1,693.93

Total Other Purchased Services

\$1,693.93

600 Supplies

610 General Supplies

5,609.56

630 Food

2,449.96

Total Supplies

\$8,059.52

800 Other Objects

810 Dues and Fees

13,127.20

890 Miscellaneous Expenditures

3,455.00

Total Other Objects

\$16,582.20

Total 2833 Staff Accounting Services

\$212,354.19

General Fund (10)

2900 Other Support Services

500 Other Purchased Services

595 IU Payments By Withholding

Total Other Purchased Services

Total 2900 Other Support Services

Elementary

Secondary

Federal

Total

10,429.01

\$10,429.01

\$10,429.01

LEA : 113384603 Lebanon SD

Printed 11/6/2023 9:59:05 AM

General Fund (10)

2910 Support Services Not Listed Elsewhere In the 2000 Series

500 Other Purchased Services

595 IU Payments By Withholding

Total Other Purchased Services

Total 2910 Support Services Not Listed Elsewhere In the 2000 Series

Elementary

Secondary

Federal

Total

10,429.01

\$10,429.01

\$10,429.01

General Fund (10)

3000 Operation of Non-Instructional Services

Total

100 Personnel Services – Salaries

100 Personnel Services – Salaries

833,886.77

Total Personnel Services – Salaries

\$833,886.77

200 Personnel Services – Employee Benefits

210 Group Insurance – Contracted Provider

8,221.34

220 Social Security Contributions

62,917.93

230 PSERS Retirement Contributions

259,944.29

250 Unemployment Compensation

(31.20)

260 Workers' Compensation

4,980.68

270 Group Insurance – Self-Insurance

96,888.88

Total Personnel Services – Employee Benefits

\$432,921.92

300 Purchased Professional and Technical Services

330 Other Professional Services

45,346.50

340 Technical Services

3,250.00

390 Other Purchased Professional and Technical Services

6,346.00

Total Purchased Professional and Technical Services

\$54,942.50

400 Purchased Property Services

410 Cleaning Services

87.50

430 Repairs and Maintenance Services

29,668.43

440 Rentals

7,156.56

Total Purchased Property Services

\$36,912.49

500 Other Purchased Services

510 Student Transportation Services

58,398.99

520 Insurance – General

42,150.00

549 Other Advertising/Public Relations

379.00

580 Travel

3,943.51

Total Other Purchased Services

\$104,871.50

600 Supplies

610 General Supplies

136,085.75

630 Food

5,388.94

640 Books and Periodicals

11,772.00

Total Supplies

\$153,246.69

700 Property

752 Capital Equipment – Original and Additional

11,517.58

Total Property

\$11,517.58

800 Other Objects

810 Dues and Fees

18,168.89

Total Other Objects

\$18,168.89

Total 3000 Operation of Non-Instructional Services

\$1,646,468.34

General Fund (10)

3200 Student Activities

	<u>Elementary</u>	<u>Secondary</u>	<u>Federal</u>	<u>Total</u>
100 Personnel Services – Salaries				
100 Personnel Services – Salaries				833,886.77
Total Personnel Services – Salaries				\$833,886.77
200 Personnel Services – Employee Benefits				
210 Group Insurance – Contracted Provider				8,221.34
220 Social Security Contributions				62,917.93
230 PSERS Retirement Contributions				259,944.29
250 Unemployment Compensation				(31.20)
260 Workers' Compensation				4,980.68
270 Group Insurance – Self-Insurance				96,888.88
Total Personnel Services – Employee Benefits				\$432,921.92
300 Purchased Professional and Technical Services				
330 Other Professional Services				45,346.50
340 Technical Services				3,250.00
390 Other Purchased Professional and Technical Services				6,346.00
Total Purchased Professional and Technical Services				\$54,942.50
400 Purchased Property Services				
410 Cleaning Services				87.50
430 Repairs and Maintenance Services				29,668.43
440 Rentals				7,156.56
Total Purchased Property Services				\$36,912.49
500 Other Purchased Services				
510 Student Transportation Services				58,398.99
520 Insurance – General				42,150.00
549 Other Advertising/Public Relations				379.00
580 Travel				3,943.51
Total Other Purchased Services				\$104,871.50
600 Supplies				
610 General Supplies				136,085.75
630 Food				5,388.94
640 Books and Periodicals				11,772.00
Total Supplies				\$153,246.69
700 Property				
752 Capital Equipment – Original and Additional				11,517.58
Total Property				\$11,517.58
800 Other Objects				
810 Dues and Fees				18,168.89
Total Other Objects				\$18,168.89
Total 3200 Student Activities				\$1,646,468.34

General Fund (10)

4000 Facilities Acquisition, Construction and Improvement Services

300 Purchased Professional and Technical Services

330 Other Professional Services

1,830,202.39

Total Purchased Professional and Technical Services

\$1,830,202.39

400 Purchased Property Services

430 Repairs and Maintenance Services

16,376.33

450 Construction Services

27,505,425.94

Total Purchased Property Services

\$27,521,802.27

500 Other Purchased Services

520 Insurance – General

68,335.00

Total Other Purchased Services

\$68,335.00

600 Supplies

610 General Supplies

1,999.00

Total Supplies

\$1,999.00

Total 4000 Facilities Acquisition, Construction and Improvement Services

\$29,422,338.66

General Fund (10)

4500 Building Acquisition and Construction Services – Original and Additional

300 Purchased Professional and Technical Services

330 Other Professional Services

1,792,997.41

Total Purchased Professional and Technical Services

\$1,792,997.41

400 Purchased Property Services

430 Repairs and Maintenance Services

3,899.52

450 Construction Services

10,000,000.00

26,284,673.31

Total Purchased Property Services

\$10,000,000.00

\$26,288,572.83

500 Other Purchased Services

520 Insurance – General

64,807.00

Total Other Purchased Services

\$64,807.00

600 Supplies

610 General Supplies

1,999.00

Total Supplies

\$1,999.00

Total 4500 Building Acquisition and Construction Services – Original and Additional

\$10,000,000.00

\$28,148,376.24

General Fund (10)

	<u>Elementary</u>	<u>Secondary</u>	<u>Federal</u>	<u>Total</u>
4600 Existing Building Improvement Services				
300 <u>Purchased Professional and Technical Services</u>				
330 Other Professional Services				37,204.98
Total Purchased Professional and Technical Services				\$37,204.98
400 <u>Purchased Property Services</u>				
430 Repairs and Maintenance Services			9,887.79	12,476.81
450 Construction Services			987,465.63	1,220,752.63
Total Purchased Property Services			\$997,353.42	\$1,233,229.44
500 <u>Other Purchased Services</u>				
520 Insurance – General			3,528.00	3,528.00
Total Other Purchased Services			\$3,528.00	\$3,528.00
Total 4600 Existing Building Improvement Services			\$1,000,881.42	\$1,273,962.42

General Fund (10)

5000 Other Expenditures and Financing Uses

800 Other Objects

830 Interest

1,830,427.15

Total Other Objects

\$1,830,427.15

900 Other Uses of Funds

910 Redemption of Principal

3,845,524.48

939 Other Fund Transfers

5,000.00

Total Other Uses of Funds

\$3,850,524.48

Total 5000 Other Expenditures and Financing Uses

\$5,680,951.63

General Fund (10)

5100 Debt Service / Other Expenditures and Financing Uses

800 Other Objects

830 Interest

Total Other Objects

900 Other Uses of Funds

910 Redemption of Principal

Total Other Uses of Funds

Total 5100 Debt Service / Other Expenditures and Financing Uses

Elementary

Secondary

Federal

Total

795,782.40

1,830,427.15

\$795,782.40

\$1,830,427.15

3,845,524.48

\$3,845,524.48

\$795,782.40

\$5,675,951.63

LEA : 113384603 Lebanon SD

Printed 11/6/2023 9:59:22 AM

General Fund (10)

5110 Debt Service

800 Other Objects

830 Interest

Total Other Objects

900 Other Uses of Funds

910 Redemption of Principal

Total Other Uses of Funds

Total 5110 Debt Service

Elementary

Secondary

Federal

Total

795,782.40

1,828,310.15

\$795,782.40

\$1,828,310.15

3,756,000.00

\$3,756,000.00

\$795,782.40

\$5,584,310.15

General Fund (10)

	<u>Elementary</u>	<u>Secondary</u>	<u>Federal</u>	<u>Total</u>
5140 Leases and Other Right-to-Use Arrangements				
800 <u>Other Objects</u>				
830 Interest				2,117.00
Total Other Objects				\$2,117.00
900 <u>Other Uses of Funds</u>				
910 Redemption of Principal				89,524.48
Total Other Uses of Funds				\$89,524.48
Total 5140 Leases and Other Right-to-Use Arrangements				\$91,641.48

LEA : 113384603 Lebanon SD

Printed 11/6/2023 9:59:22 AM

General Fund (10)

	<u>Elementary</u>	<u>Secondary</u>	<u>Federal</u>	<u>Total</u>
5200 Interfund Transfers – Out				
900 <u>Other Uses of Funds</u>				
939 Other Fund Transfers				5,000.00
Total Other Uses of Funds				\$5,000.00
Total 5200 Interfund Transfers – Out				\$5,000.00

LEA : 113384603 Lebanon SD

Printed 11/6/2023 9:59:22 AM

General Fund (10)

5240 Debt Service Fund Transfers

900 Other Uses of Funds

939 Other Fund Transfers

Total Other Uses of Funds

Total 5240 Debt Service Fund Transfers

Elementary

Secondary

Federal

Total

5,000.00

\$5,000.00

\$5,000.00

Public Purpose (Expendable) Trust Fund (27)

2000 Support Services

600 Supplies

610 General Supplies

Total

30,382.20

Total Supplies

\$30,382.20

800 Other Objects

890 Miscellaneous Expenditures

36,018.44

Total Other Objects

\$36,018.44

Total 2000 Support Services

\$66,400.64

LEA : 113384603 Lebanon SD

Printed 11/6/2023 9:59:11 AM

Public Purpose (Expendable) Trust Fund (27)

	<u>Elementary</u>	<u>Secondary</u>	<u>Federal</u>	<u>Total</u>
2100 Support Services – Students				
600 <u>Supplies</u>				
610 General Supplies	17,694.58	12,687.62		30,382.20
Total Supplies	\$17,694.58	\$12,687.62		\$30,382.20
800 <u>Other Objects</u>				
890 Miscellaneous Expenditures	20,977.13	15,041.31		36,018.44
Total Other Objects	\$20,977.13	\$15,041.31		\$36,018.44
Total 2100 Support Services – Students	\$38,671.71	\$27,728.93		\$66,400.64

Public Purpose (Expendable) Trust Fund (27)

	<u>Elementary</u>	<u>Secondary</u>	<u>Federal</u>	<u>Total</u>
2190 Other Student Services				
600 <u>Supplies</u>				
610 General Supplies	17,694.58	12,687.62		30,382.20
Total Supplies	\$17,694.58	\$12,687.62		\$30,382.20
800 <u>Other Objects</u>				
890 Miscellaneous Expenditures	20,977.13	15,041.31		36,018.44
Total Other Objects	\$20,977.13	\$15,041.31		\$36,018.44
Total 2190 Other Student Services	\$38,671.71	\$27,728.93		\$66,400.64

LEA : 113384603 Lebanon SD

Printed 11/6/2023 9:59:13 AM

Other Capital Projects Fund (39)

2000 Support Services

Total

800 Other Objects

810 Dues and Fees

282,016.10

Total Other Objects

\$282,016.10

Total 2000 Support Services

\$282,016.10

LEA : 113384603 Lebanon SD

Printed 11/6/2023 9:59:13 AM

Other Capital Projects Fund (39)

2300 Support Services – Administration

800 Other Objects

810 Dues and Fees

Total Other Objects

Total 2300 Support Services – Administration

<u>Elementary</u>	<u>Secondary</u>	<u>Federal</u>	<u>Total</u>
			282,016.10
			\$282,016.10
			\$282,016.10

Other Capital Projects Fund (39)

2390 Other Administration Services

Elementary

Secondary

Federal

Total

800 Other Objects

810 Dues and Fees

282,016.10

Total Other Objects

\$282,016.10

Total 2390 Other Administration Services

\$282,016.10

LEA : 113384603 Lebanon SD

Printed 11/6/2023 9:59:20 AM

Other Capital Projects Fund (39)

4000 Facilities Acquisition, Construction and Improvement Services

Total

300 Purchased Professional and Technical Services

330 Other Professional Services

391,379.09

Total Purchased Professional and Technical Services

\$391,379.09

400 Purchased Property Services

450 Construction Services

3,516,110.25

Total Purchased Property Services

\$3,516,110.25

Total 4000 Facilities Acquisition, Construction and Improvement Services

\$3,907,489.34

Other Capital Projects Fund (39)

4200 Existing Site Improvement Services

Elementary

Secondary

Federal

Total

300 Purchased Professional and Technical Services

330 Other Professional Services

93,722.50

Total Purchased Professional and Technical Services

\$93,722.50

400 Purchased Property Services

450 Construction Services

3,516,110.25

Total Purchased Property Services

\$3,516,110.25

Total 4200 Existing Site Improvement Services

\$3,609,832.75

LEA : 113384603 Lebanon SD

Printed 11/6/2023 9:59:20 AM

Other Capital Projects Fund (39)

4600 Existing Building Improvement Services

Elementary

Secondary

Federal

Total

300 Purchased Professional and Technical Services

330 Other Professional Services

297,656.59

Total Purchased Professional and Technical Services

\$297,656.59

Total 4600 Existing Building Improvement Services

\$297,656.59

Debt Service Fund (40)

5000 Other Expenditures and Financing Uses

800 Other Objects

830 Interest

Total Other Objects

Total 5000 Other Expenditures and Financing Uses

Total

2,911.00

\$2,911.00

\$2,911.00

LEA : 113384603 Lebanon SD

Printed 11/6/2023 9:59:24 AM

Debt Service Fund (40)

5100 Debt Service / Other Expenditures and Financing Uses

Elementary

Secondary

Federal

Total

800 Other Objects

830 Interest

2,911.00

Total Other Objects

\$2,911.00

Total 5100 Debt Service / Other Expenditures and Financing Uses

\$2,911.00

Debt Service Fund (40)

5110 Debt Service

800 Other Objects

830 Interest

Total Other Objects

Total 5110 Debt Service

Elementary

Secondary

Federal

Total

2,911.00

\$2,911.00

\$2,911.00

	<u>General Fund(10)</u>	<u>Student Sponsored Activity Fund(21)</u>	<u>Public Purpose Trust(27)</u>	<u>Other Compt Approved (28)</u>	<u>Athletic / Activity(29)</u>
1000 Instruction					
1100 Regular Programs - Elementary / Secondary	33,851,367.52				
1200 Special Programs - Elementary / Secondary	13,268,443.26				
1300 Vocational Education	1,329,135.41				
1400 Other Instructional Programs - Elementary / Secondary	1,202,945.57				
1500 Nonpublic School Programs	9,879.01				
1800 Pre-Kindergarten	2,567,307.28				
Total Instruction	\$52,229,078.05				
2000 Support Services					
2100 Support Services - Students	3,282,130.23		66,400.64		
2200 Support Services - Instructional Staff	4,052,482.62				
2300 Support Services - Administration	4,681,090.59				
2400 Support Services - Pupil Health	775,056.65				
2500 Support Services - Business	1,074,723.75				
2600 Operation and Maintenance of Plant Services	6,363,687.25				
2700 Student Transportation Services	1,844,105.88				
2800 Support Services - Central	987,170.28				
2900 Other Support Services	10,429.01				
Total Support Services	\$23,070,876.26		\$66,400.64		
3000 Operation of Non-Instructional Services					
3200 Student Activities	1,646,468.34				
Total Operation of Non-Instructional Services	\$1,646,468.34				
4000 Facilities Acquisition, Construction and Improvement Services					
4200 Existing Site Improvement Services					
4500 Building Acquisition and Construction Services - Original and Additional	28,148,376.24				
4600 Existing Building Improvement Services	1,273,962.42				
Total Facilities Acquisition, Construction and Improvement Services	\$29,422,338.66				
5000 Other Expenditures and Financing Uses					
5100 Debt Service / Other Expenditures and Financing Uses	5,675,951.63				
5200 Interfund Transfers - Out	5,000.00				
Total Other Expenditures and Financing Uses	\$5,680,951.63				
TOTAL ACTUAL EXPENDITURES & OTHER FINANCING USES	\$112,049,712.94		\$66,400.64		

	<u>Capital Reserve (690. Capital Reserve (1431)(32)</u> <u>1850)(31)</u>	<u>Other Capital Projects</u> <u>Fund(39)</u>	<u>Debt Service(40)</u>	<u>Permanent(90)</u>
1000 Instruction				
1100 Regular Programs - Elementary / Secondary				
1200 Special Programs - Elementary / Secondary				
1300 Vocational Education				
1400 Other Instructional Programs - Elementary / Secondary				
1500 Nonpublic School Programs				
1800 Pre-Kindergarten				
Total Instruction				
2000 Support Services				
2100 Support Services - Students				
2200 Support Services - Instructional Staff				
2300 Support Services - Administration		282,016.10		
2400 Support Services - Pupil Health				
2500 Support Services - Business				
2600 Operation and Maintenance of Plant Services				
2700 Student Transportation Services				
2800 Support Services - Central				
2900 Other Support Services				
Total Support Services		\$282,016.10		
3000 Operation of Non-Instructional Services				
3200 Student Activities				
Total Operation of Non-Instructional Services				
4000 Facilities Acquisition, Construction and Improvement Services				
4200 Existing Site Improvement Services		3,609,832.75		
4500 Building Acquisition and Construction Services - Original and Additional				
4600 Existing Building Improvement Services		297,656.59		
Total Facilities Acquisition, Construction and Improvement Services		\$3,907,489.34		
5000 Other Expenditures and Financing Uses				
5100 Debt Service / Other Expenditures and Financing Uses			2,911.00	
5200 Interfund Transfers - Out				
Total Other Expenditures and Financing Uses			\$2,911.00	
TOTAL ACTUAL EXPENDITURES & OTHER FINANCING USES		\$4,189,505.44	\$2,911.00	

	<u>Total</u>
1000 Instruction	
1100 Regular Programs - Elementary / Secondary	33,851,367.52
1200 Special Programs - Elementary / Secondary	13,268,443.26
1300 Vocational Education	1,329,135.41
1400 Other Instructional Programs - Elementary / Secondary	1,202,945.57
1500 Nonpublic School Programs	9,879.01
1800 Pre-Kindergarten	2,567,307.28
Total Instruction	\$52,229,078.05
2000 Support Services	
2100 Support Services - Students	3,348,530.87
2200 Support Services - Instructional Staff	4,052,482.62
2300 Support Services - Administration	4,963,106.69
2400 Support Services - Pupil Health	775,056.65
2500 Support Services - Business	1,074,723.75
2600 Operation and Maintenance of Plant Services	6,363,687.25
2700 Student Transportation Services	1,844,105.88
2800 Support Services - Central	987,170.28
2900 Other Support Services	10,429.01
Total Support Services	\$23,419,293.00
3000 Operation of Non-Instructional Services	
3200 Student Activities	1,646,468.34
Total Operation of Non-Instructional Services	\$1,646,468.34
4000 Facilities Acquisition, Construction and Improvement Services	
4200 Existing Site Improvement Services	3,609,832.75
4500 Building Acquisition and Construction Services - Original and Additional	28,148,376.24
4600 Existing Building Improvement Services	1,571,619.01
Total Facilities Acquisition, Construction and Improvement Services	\$33,329,828.00
5000 Other Expenditures and Financing Uses	
5100 Debt Service / Other Expenditures and Financing Uses	5,678,862.63
5200 Interfund Transfers - Out	5,000.00
Total Other Expenditures and Financing Uses	\$5,683,862.63
TOTAL ACTUAL EXPENDITURES & OTHER FINANCING USES	\$116,308,530.02

PSERS Salary Data (Salary Data should relate to the General Fund only)

Amount Description	Amount
Total Salary Base for salaries subject to PSERS withholding	35,204,248.37
Total Federally Funded salaries subject to PSERS withholding	4,914,468.52

Title I Expenditure Data

Amount Description	Amount
Expenditures Funded with Current Title I Funds	2,592,673.00
Expenditures Funded with Carry over Title I Funds	7,741.00
Total Title I Expenditure Data	\$2,600,414.00

Title IV Revenue Data

Amount Description	Amount
Revenue from Title IV-A-1: Student Support and Academic Enrichment Grants	207,851.00
Revenue from Title IV-B: 21st Century Community Learning Centers	396,290.81

Title V Revenue Data

Amount Description	Amount
Revenue from Title V-B-2: Rural and Low-Income School Programs	
Revenue from Title V-B-1: Small Rural School Achievement (Directly from the Federal Govt)	

1 .	<u>Current Special Education Expenditures within Function 1000</u> See list of exclusions in the note below.	14,510,122.39
2 .	<u>Current Special Education Expenditures within Function 2000</u> See list of exclusions in the note below.	5,085,647.54
2A.	<u>Current Special Education Expenditures within Sub-Function 2100</u> This data should also be included in line 2 above. See list of exclusions in the note below.	735,337.38
2B.	<u>Current Special Education Expenditures within Sub-Function 2200</u> This data should also be included in line 2 above. See list of exclusions in the note below.	892,193.40
2C.	<u>Current Special Education Expenditures within Sub-Function 2700</u> This data should also be included in line 2 above. See list of exclusions in the note below.	1,448,724.64
3.	<u>Current Special Education Expenditures within Sub-Function 3100</u> See list of exclusions in the note below.	918,552.92
4.	<u>Current Special Education Expenditures within Sub-Function 3200</u> See list of exclusions in the note below.	359,035.19

Note: The Current Special Education Expenditure amounts for each line should be calculated as follows:

- * Include the total expenditures for special education costs from all governmental funds and the food service fund 51 for the function/sub-function requested
- * Exclude data from sub-functions: 1243,1450,1500,1600,1807,2280,2450,2750,2990
- * Exclude data from objects: 322,511,512,516,561,562,564,566,592,593,594,595,596,597,700,830,899

Benefits for Staff Relative to Collective Bargaining Agreements

OBJECT	COVERED	NOT COVERED	TOTAL
10 General Fund			
211 Medical Insurance			
212 Dental Insurance	210,808.02	33,414.36	244,222.38
215 Eye Care Insurance	52,109.81	1,592.52	53,702.33
216 Prescription Insurance			
271 Self-Insurance Medical Benefits	4,405,424.81	719,774.28	5,125,199.09
272 Self-Insurance Dental Benefits			
275 Self-Insurance Eye Care Benefits			
276 Self-Insurance Prescription Benefits			
FUND TOTAL	\$4,668,342.64	\$754,781.16	\$5,423,123.80
50 Enterprise Fund			
211 Medical Insurance			
212 Dental Insurance			
215 Eye Care Insurance			
216 Prescription Insurance			
271 Self-Insurance Medical Benefits	66,976.80		66,976.80
272 Self-Insurance Dental Benefits			
275 Self-Insurance Eye Care Benefits			
276 Self-Insurance Prescription Benefits			
FUND TOTAL	\$66,976.80		\$66,976.80
60 Internal Service Fund			
No Self Insurance data to report			
211 Medical Insurance			
212 Dental Insurance			
215 Eye Care Insurance			
216 Prescription Insurance			
271 Self-Insurance Medical Benefits			
272 Self-Insurance Dental Benefits			
275 Self-Insurance Eye Care Benefits			
276 Self-Insurance Prescription Benefits			
FUND TOTAL			
Total of All Funds	\$4,735,319.44	\$754,781.16	\$5,490,100.60

LEA : 113384603 Lebanon SD

Printed 11/6/2023 9:59:42 AM

Function	Special Education (Prior Year)	Nonspecial Education (Prior Year)	Total (Prior Year)	Special Education (Current Year)	Nonspecial Education (Current Year)	Total (Current Year)
2120 Guidance Services	380,460.96	1,333,327.16	1,713,788.12	361,434.71	1,284,442.82	1,645,877.53
2140 Psychological Services	122,662.47	429,871.17	552,533.64	126,015.90	447,827.00	573,842.90
2150 Speech Pathology and Audiology Services						
2160 Social Work Services	84,576.36	296,398.25	380,974.61	102,009.65	362,515.17	464,524.82
2260 Instruction and Curriculum Development Services	206,974.07	725,341.56	932,315.63	258,239.45	917,714.31	1,175,953.76
2350 Legal and Accounting Services	21,810.05	76,433.44	98,243.49	16,953.67	60,248.84	77,202.51
2420 Medical Services	174,178.60	610,409.67	784,588.27	170,202.44	604,854.21	775,056.65
2440 Nursing Services						
2700 Student Transportation Services	1,243,383.42	418,893.41	1,662,276.83	1,448,724.64	395,381.24	1,844,105.88
Total	\$2,234,045.93	\$3,890,674.66	\$6,124,720.59	\$2,483,580.46	\$4,072,983.59	\$6,556,564.05

(PRINCIPAL AMOUNTS ONLY)

GOVERNMENTAL FUNDS/ ACTIVITIES

	Short-Term Borrowing	General Obligation Bonds/Notes	Authority Building Obligations	Leases, Other Right to Use Arrangements	Extended Term Financing Agreements	Other Long Term Debt/Liabilities	OPEB, Comp Abs, Net Pension Liab	Total
1. Debt at Beginning of Fiscal Year		30,039,000.00	15,000,000.00	301,565.00			101,649,413.00	146,989,978.00
2. Additional Debt Incurred During Year		9,970,000.00		96,594.00			12,990,896.00	23,057,490.00
3. Retirements and Repayments		3,756,000.00		89,935.00			1,309,366.00	5,155,301.00
4. Debt at End of Fiscal Year		36,253,000.00	15,000,000.00	308,224.00			113,330,943.00	164,892,167.00
5. Accreted Interest at End Of Fiscal Year								
6. Total Debt and Accreted Interest		36,253,000.00	15,000,000.00	308,224.00			113,330,943.00	164,892,167.00
7. Current Portion P&I - Due within 1 year		4,708,485.76	974,250.00	104,344.00				5,787,079.76
8. Interest Paid during current fiscal year		857,091.23	974,250.00					1,831,341.23

(PRINCIPAL AMOUNTS ONLY)

PROPRIETARY FUNDS

	Short-Term Borrowing	General Obligation Bonds/Notes	Authority Building Obligations	Leases, Other Right to Use Arrangements	Extended Term Financing Agreements	Other Long Term Debt/Liabilities	OPEB, Comp Abs, Net Pension Liab	Total
1. Debt at Beginning of Fiscal Year							1,228,119.00	1,228,119.00
2. Additional Debt Incurred During Year							164,050.00	164,050.00
3. Retirements and Repayments							25,134.00	25,134.00
4. Debt at End of Fiscal Year							1,367,035.00	1,367,035.00
5. Accreted Interest at End Of Fiscal Year								
6. Total Debt and Accreted Interest							1,367,035.00	1,367,035.00
7. Current Portion P&I - Due within 1 year								
8. Interest Paid during current fiscal year								

Total Principal and Interest Payments Made by Your School - All Funds

Function	Fund		Principal (910)	Principal (920)	Interest (830)	Total (Principal +Interest)	Misc Other Uses (990)
5110	10	General Fund	3,756,000.00		1,828,310.15	5,584,310.15	
5110	20	Special Revenue Funds					
5110	30	Capital Projects Funds					
5110	40	Debt Service Fund			2,911.00	2,911.00	
5110	90	Permanent Fund					
5120	10	General Fund					
5120	20	Special Revenue Funds					
5120	30	Capital Projects Funds					
5120	40	Debt Service Fund					
5140	10	General Fund	89,524.48		2,117.00	91,641.48	
5140	20	Special Revenue Funds					
5140	30	Capital Projects Funds					
5140	40	Debt Service Fund					
5140	90	Permanent Fund					
Total Debt Payments - Governmental Funds			\$3,845,524.48		\$1,833,338.15	\$5,678,862.63	

Function	Fund		Principal (910)	Principal (920)	Interest (830)	Total (Principal +Interest)
5110	50	Enterprise Fund				
5110	60	Internal Service Fund				
5120	50	Enterprise Fund				
5120	60	Internal Service Fund				
5140	50	Enterprise Fund				
5140	60	Internal Service Fund				
Total Debt Payments - Proprietary Funds						

Debt Category	Debt Issue Date (MM/YYYY)	Debt at Beginning of Fiscal Year	Principal Amounts Only			Current Portion Due Within One Year (Principal and Interest)	Interest Paid During Fiscal Year
			Additions	Reductions / Repayments	Debt at End of Fiscal Year		
General Obligation Bonds/Notes – CIB	10/2021	9,590,000.00		5,000.00	9,585,000.00	248,900.00	199,100.00
General Obligation Bonds/Notes – CIB	11/2021	5,311,000.00		2,799,000.00	2,512,000.00	2,527,649.76	33,087.54
General Obligation Bonds/Notes – CIB	03/2019	13,220,000.00		5,000.00	13,215,000.00	533,600.00	528,800.00
General Obligation Bonds/Notes – CIB	08/2017	1,918,000.00		947,000.00	971,000.00	991,391.00	40,278.00
General Obligation Bonds/Notes – CIB	4/2023		9,970,000.00		9,970,000.00	406,945.00	55,825.69
Authority Building Obligations – CIB	12/2010	15,000,000.00			15,000,000.00	974,250.00	974,250.00
Leases and Other Right to Use Arrangements		301,565.00	96,594.00	89,935.00	308,224.00	104,344.00	
Other Post-Employment Benefits (OPEB)		8,449,719.00		1,304,291.00	7,145,428.00		
Compensated Absences		1,602,712.00		5,075.00	1,597,637.00		
Net Pension Liability		91,596,982.00	12,990,896.00		104,587,878.00		
Totals for Debt Entered:		\$146,989,978.00	\$23,057,490.00	\$5,155,301.00	\$164,892,167.00	\$5,787,079.76	\$1,831,341.23

Debt Category	Debt Issue Date (MM/YYYY)	Debt at Beginning of Fiscal Year	Principal Amounts Only			Current Portion Due Within One Year (Principal and Interest)	Interest Paid During Fiscal Year
			Additions	Reductions / Repayments	Debt at End of Fiscal Year		
Other Post-Employment Benefits (OPEB)		68,859.00		25,134.00	43,725.00		
Compensated Absences		9,242.00	946.00		10,188.00		
Net Pension Liability		1,150,018.00	163,104.00		1,313,122.00		
Totals for Debt Entered:		\$1,228,119.00	\$164,050.00	\$25,134.00	\$1,367,035.00		

General Fund (10)

Section 1: Tuition/Purchased Services as Reported within Expenditure Detail

	Amount
Tuition Reported in General Fund Expenditures 1000-560	5,621,687.04
Purchased Services in General Fund Expenditures 1000-594 and 1000-597	2,418.48
Section 1 Total	\$5,624,105.52

Section 2: Tuition Paid to Institution Types During Fiscal Year

	Tuition Paid For Nonspecial Education	Tuition Paid For Special Education	Total
1 1306 Institutions			
2 Institutionalized Children's Programs		2,418.48	2,418.48
3 Juveniles Incarcerated in Adult Facilities			
4 Residential Treatment Facilities			
5 Other Local Education Agencies	214,579.79	1,581,864.74	1,796,444.53
6 Brick and Mortar Charter Schools			
7 Cyber Charter Schools	1,357,780.59	1,023,908.21	2,381,688.80
8 Career and Technology Centers	1,231,130.00		1,231,130.00
9 Approved Private Schools		50,444.22	50,444.22
10 PA Chartered Schools for the Deaf and Blind			
11 Private Residential Rehabilitative Institutions	11,724.56		11,724.56
12 Juvenile Detention Centers	126,669.43		126,669.43
13 Special Program Jointures			
14 Other Tuition Not Included Elsewhere In This Section	23,585.50		23,585.50
Section 2 Total	\$2,965,469.87	\$2,658,635.65	\$5,624,105.52

Food Service / Cafeteria Operations Fund (51)

3000 Operation of Non-Instructional Services

Total

100 Personnel Services – Salaries

100 Personnel Services – Salaries

173,646.20

Total Personnel Services – Salaries

\$173,646.20

200 Personnel Services – Employee Benefits

210 Group Insurance – Contracted Provider

903.97

220 Social Security Contributions

12,174.00

230 PSERS Retirement Contributions

231,030.00

270 Group Insurance – Self-Insurance

66,976.80

Total Personnel Services – Employee Benefits

\$311,084.77

300 Purchased Professional and Technical Services

330 Other Professional Services

64,104.16

Total Purchased Professional and Technical Services

\$64,104.16

400 Purchased Property Services

410 Cleaning Services

35,421.81

430 Repairs and Maintenance Services

33,272.84

440 Rentals

2,512.51

Total Purchased Property Services

\$71,207.16

500 Other Purchased Services

540 Advertising

1,105.86

570 Food Service Management

1,712,327.97

580 Travel

1,818.45

Total Other Purchased Services

\$1,715,252.28

600 Supplies

610 General Supplies

227,895.07

630 Food

1,631,771.94

Total Supplies

\$1,859,667.01

700 Property

740 Depreciation

67,426.00

Total Property

\$67,426.00

Total 3000 Operation of Non-Instructional Services

\$4,262,387.58

LEA : 113384603 Lebanon SD

Printed 11/6/2023 9:59:53 AM

Food Service / Cafeteria Operations Fund (51)

	<u>Elementary</u>	<u>Secondary</u>	<u>Federal</u>	<u>Total</u>
3100 Food Services				
100 Personnel Services – Salaries				
100 Personnel Services – Salaries			173,646.20	173,646.20
Total Personnel Services – Salaries			\$173,646.20	\$173,646.20
200 Personnel Services – Employee Benefits				
210 Group Insurance – Contracted Provider			903.97	903.97
220 Social Security Contributions			12,174.00	12,174.00
230 PSERS Retirement Contributions			231,030.00	231,030.00
270 Group Insurance – Self-Insurance			66,976.80	66,976.80
Total Personnel Services – Employee Benefits			\$311,084.77	\$311,084.77
300 Purchased Professional and Technical Services				
330 Other Professional Services			64,104.16	64,104.16
Total Purchased Professional and Technical Services			\$64,104.16	\$64,104.16
400 Purchased Property Services				
410 Cleaning Services			35,421.81	35,421.81
430 Repairs and Maintenance Services			33,272.84	33,272.84
440 Rentals			2,512.51	2,512.51
Total Purchased Property Services			\$71,207.16	\$71,207.16
500 Other Purchased Services				
540 Advertising			1,105.86	1,105.86
570 Food Service Management			1,712,327.97	1,712,327.97
580 Travel			1,818.45	1,818.45
Total Other Purchased Services			\$1,715,252.28	\$1,715,252.28
600 Supplies				
610 General Supplies			171,696.53	227,895.07
630 Food			1,631,771.94	1,631,771.94
Total Supplies			\$1,803,468.47	\$1,859,667.01
700 Property				
740 Depreciation				67,426.00
Total Property				\$67,426.00
Total 3100 Food Services			\$4,138,763.04	\$4,262,387.58

Internal Service Fund (60)

1000 Instruction

Total

200 Personnel Services – Employee Benefits

270 Group Insurance – Self-Insurance

5,577,452.08

Total Personnel Services – Employee Benefits

\$5,577,452.08

300 Purchased Professional and Technical Services

330 Other Professional Services

24,457.73

Total Purchased Professional and Technical Services

\$24,457.73

500 Other Purchased Services

520 Insurance – General

584,445.75

Total Other Purchased Services

\$584,445.75

Total 1000 Instruction

\$6,186,355.56

Internal Service Fund (60)

	<u>Elementary</u>	<u>Secondary</u>	<u>Federal</u>	<u>Total</u>
1100 Regular Programs – Elementary / Secondary				
200 Personnel Services – Employee Benefits				
270 Group Insurance – Self-Insurance				5,577,452.08
Total Personnel Services – Employee Benefits				\$5,577,452.08
300 Purchased Professional and Technical Services				
330 Other Professional Services				24,457.73
Total Purchased Professional and Technical Services				\$24,457.73
500 Other Purchased Services				
520 Insurance – General				584,445.75
Total Other Purchased Services				\$584,445.75
Total 1100 Regular Programs – Elementary / Secondary				\$6,186,355.56

Internal Service Fund (60)

1110 Regular Programs

200 Personnel Services – Employee Benefits

270 Group Insurance – Self-Insurance

Total Personnel Services – Employee Benefits

300 Purchased Professional and Technical Services

330 Other Professional Services

Total Purchased Professional and Technical Services

500 Other Purchased Services

520 Insurance – General

Total Other Purchased Services

Total 1110 Regular Programs

Elementary

Secondary

Federal

Total

5,577,452.08

\$5,577,452.08

24,457.73

\$24,457.73

584,445.75

\$584,445.75

\$6,186,355.56

	<u>Food Service(51)</u>	<u>Child Care Operations(52)</u>	<u>Other Enterprise(58)</u>	<u>Internal Service(60)</u>	<u>Total</u>
1000 Instruction					
1100 Regular Programs - Elementary / Secondary				6,186,355.56	6,186,355.56
Total Instruction				\$6,186,355.56	\$6,186,355.56
3000 Operation of Non-Instructional Services					
3100 Food Services	4,262,387.58				4,262,387.58
Total Operation of Non-Instructional Services	\$4,262,387.58				\$4,262,387.58
TOTAL ACTUAL EXPENDITURES & OTHER FINANCING USES	\$4,262,387.58			\$6,186,355.56	\$10,448,743.14

Fund	School	School Number	Local Personnel	Local Nonpersonnel	State Personnel	State Nonpersonnel	Federal Personnel	Federal Nonpersonnel	Total	Explanation
10										
	Harding El Sch	6616	1,640,523.18	257,461.75	3,672,309.35	619,485.64	1,318,377.82	300,491.86	7,808,649.60	
	Houck El Sch	5337	1,047,663.18	153,075.48	2,492,299.72	368,319.02	790,757.57	194,131.34	5,046,246.31	
	Lebanon MS	2754	3,077,968.68	416,127.53	7,405,983.24	1,001,255.64	871,378.29	212,367.23	12,985,080.61	
	Lebanon SHS	5155	4,309,164.27	681,611.77	11,141,742.94	1,780,531.23	785,016.64	249,100.46	18,947,167.31	
	Northwest El Sch	6894	1,792,398.53	250,461.39	3,810,731.87	602,641.89	1,466,957.66	308,824.75	8,232,016.09	
	Southeast El Sch	2746	1,185,651.11	195,909.19	3,043,196.80	471,382.36	754,939.11	243,707.05	5,894,785.62	
	Southwest El Sch	2743	1,134,984.58	184,655.87	2,809,547.92	444,305.44	638,169.65	217,071.22	5,428,734.68	
Total			14,188,353.53	2,139,302.98	34,375,811.84	5,287,921.22	6,625,596.74	1,725,693.91	64,342,680.22	